

Building a Future for Broward's Children



**Children's
Services
Council**

of Broward County

Our Focus is Our Children.



Comprehensive Annual Financial Report

**Fiscal Year Ending
September 30, 2017**

6600 West Commercial Blvd, Lauderdale, FL 33319
954 377-1000 info@cscbroward.org www.cscbroward.org



Beam Furr
Chair
Broward County
Commission



Cathy Donnelly
Vice Chair
Governor
Appointee



Tom Powers
Secretary
Governor
Appointee

Council Members



Maria M. Schneider
Governor Appointee



Hon. Michael J. Orlando
Judicial Member



Ana M. Valladares
Governor Appointee



Silvia Beebe
Circuit Community
Development
Administrator
Department of
Children &
Families



Emilio Benitez
Governor Appointee



Dr. Paula Thaqi
Director Broward
County Health
Department



Robert W. Runcie
Superintendent
Broward County
Schools



Robin Bartleman
Board Member
Broward County
Schools

COMPREHENSIVE ANNUAL FINANCIAL REPORT

Children's Services Council Of Broward County, Florida

for the

Fiscal Year Ended September 30, 2017

Issued By:

Cindy J. Arenberg Seltzer, President/CEO

Prepared By:

Financial Management:

Monti Larsen, Chief Operating Officer

Kathleen Campbell, Director of Finance



CHILDREN’S SERVICES COUNCIL OF BROWARD COUNTY
Comprehensive Annual Financial Report
For The Fiscal Year Ended September 30, 2017

TABLE OF CONTENTS

INTRODUCTORY SECTION

Letter of Transmittal	i
Organizational Chart and Principal Officials	xiii
GFOA Certificate of Achievement	xv

FINANCIAL SECTION

Independent Auditors’ Report	1
Management’s Discussion and Analysis (“MDA”) (Unaudited)	3
Basic Financial Statements	
Government-Wide Financial Statements	
Statement of Net Position	26
Statement of Activities	29
Fund Financial Statements	
Balance Sheet-Governmental Funds	30
Reconciliation of the Governmental Funds Balance Sheet to the Statement of Net Position	31
Statement of Revenues, Expenditures and Changes in Fund Balance-Government Funds	32
Reconciliation of the Statement of Revenues, Expenditures and Changes in Fund Balance of Governmental Funds to the Statement of Activities	34

Notes to the Financial Statements:

Description of the Children's Services Council	35
Summary of Significant Accounting Policies	35
Cash and Investments	50
Receivables and Payables	53
Interfund Receivables and Payables	53
Property Taxes	54
Capital Assets Activity	54
Retirement Plans	55
Post-Employment Benefits Other Than Pension	66
Insurance Activities	69
Commitments and Contingencies	70
Long-Term Liabilities	71
Fund Balance	71
Grant Funding	72
Contingency	73

Required Supplementary Information

Schedule of Revenues, Expenditures, and Changes in Fund Balance - Budget to Actual Comparison General Fund	76
Schedule of Revenues, Expenditures, and Changes in Fund Balance -Budget to Actual Comparison Special Revenue Fund	79
Schedule of Proportionate Share of Net Pension Liability-Florida Retirement System	81
Schedule of Contributions-Florida Retirement System	82
Schedule of Proportionate Share of Net Pension Liability Health Insurance Subsidy Program-Florida Retirement System	83
Schedule of Contributions Health Insurance Subsidy Program-Florida Retirement System	84
Schedule of Changes in Net OPEB Liability and Related Ratios	85

STATISTICAL SECTION (UNAUDITED)

Net Position by Component	88
Changes in Net Position	90
Fund Balance, Governmental Funds	92

Changes in Fund Balance, Governmental Funds	94
Assessed Value and Actual Value of Taxable Property	96
Direct and Overlapping Property Tax Rates	98
Principal Property Taxpayers	100
Property Tax Levies and Collections	102
Demographic and Economic Statistics	104
Principal Employers	106
Full-Time Equivalent Employees by Function	108
Operating Indicators	109
Program Budget Indicators	110

COMPLIANCE SECTION

Independent Auditors' Report on Internal Control over Financial Reporting and on Compliance and Other Matters Based on an Audit of Financial Statements Performed in Accordance with <i>Government Auditing Standards</i>	113
Independent Auditors' Report on Compliance for Each Major Program and on Internal Control Over Compliance Required By The Uniform Guidance	115
Schedule of Expenditures of Federal Awards	117
Notes to Schedule of Expenditures of Federal Awards	118
Schedule of Findings and Questioned Costs	119
Management Letter in Accordance with the Rules of the Auditor General of the State of Florida	121
Independent Accountants' Report on Compliance Pursuant to Section 218.415 Florida Statutes	123





Introductory Section





**CHILDREN'S
SERVICES COUNCIL MEMBERS:**

*Beam Furr, Chair
Broward County Commission*

*Cathy Donnelly, Vice Chair
Governor Appointee*

*Tom Powers, Secretary
Governor Appointee*

*Emilio Benitez, Immediate Past Chair
Governor Appointee*

*Robin Bartleman
Board Member
Broward County Public Schools*

*Silvia Beebe
Circuit Community Development
Administrator
Department of Children & Families*

*Hon. Kenneth L. Gillespie
Judicial Member*

*Robert W. Runcie
Superintendent
Broward County Public Schools*

*Maria M. Schneider
Governor Appointee*

*Dr. Paula Thaqi
Director
Broward County Health Department*

*Ana M. Valladares
Governor Appointee*

STAFF

*Cindy J. Arenberg Seltzer
President/CEO*

LEGAL COUNSEL

John Milledge

Garry Johnson

March 15, 2018

Members of the Children's Services Council
of Broward County
6600 West Commercial Blvd.
Lauderhill, Florida 33319

Dear Council Members:

In the spirit of good stewardship, we respectfully submit the Comprehensive Annual Financial Report ("CAFR") of the Children's Services Council of Broward County ("Council") or ("CSC") for the fiscal year that ended September 30, 2017. Florida Statutes require that our financial statements are prepared in conformance with United States Generally Accepted Accounting Principles ("GAAP") and that an external audit be performed by an independent certified public accounting firm in accordance with generally accepted auditing standards. This report is the primary method of reporting the Council's financial activities and satisfies those requirements.

Responsibility for the integrity, objectivity, accuracy, completeness and fairness of presentation of these financial statements rests with management. Prepared in conformity with United States Generally Accepted Accounting Principles ("GAAP") for governmental entities, the financial information is accurate in all material respects and is presented in a manner designed to fairly set forth the financial position and operating results for the Council, on a Government-wide and Fund basis. This report includes all disclosures necessary to enable the reader to gain an understanding of the financial affairs of the Council.

Management is responsible for maintaining an internal control framework that is designed to protect the Council's assets from loss, theft, or misuse. The concept of reasonable assurance recognizes that the cost of a control should not exceed the expected benefits, and evaluation of costs and benefits requires management's estimates. The Council Members and management have a plan of organization and policies in place to safeguard assets, validate the reliability of accounting data, promote operational efficiency, and encourage adherence to prescribed managerial policies and procedures. We believe these existing internal accounting controls adequately safeguard assets and provide reasonable, but not absolute, assurance of proper recording and reporting of the Council's finances.

The Council's financial statements have been audited by Caballero, Fierman, Llerena & Garcia, LLP, a firm of licensed certified public accountants competitively selected by the Council Members on June 15, 2017. This is the first year of a five-year term of the audit engagement since Council policy mandates a five-year audit firm rotation. The goal of the independent audit was to provide reasonable assurance that the financial statements of the Council for the fiscal year ended September 30, 2017 are free of material misstatement. The audit was conducted in accordance with auditing standards generally accepted in the United States of America and the standards applicable to financial audits contained in *Government Auditing Standards*, issued by the Comptroller General of the United States. The independent audit involved examining, on a test basis, evidence supporting the amounts and disclosures in the financial statements; assessing the accounting principles used and significant estimates made by management; and evaluating the overall basic financial statement presentation. The independent auditors concluded that, based upon the audit, there was a reasonable basis for rendering an unmodified opinion that the Council's basic financial statements for fiscal year ended September 30, 2017, are fairly presented in conformity with GAAP. The independent auditors' report is presented as the first component of the financial section of this report.

The independent audit of the Council's basic financial statements was part of a broader, federally mandated "Single Audit" designed to meet the special needs of federal grantor agencies. This federal requirement is the result of receiving federal grants from various agencies as listed on the Schedule of Expenditures of Federal Awards. The standards governing Single Audit engagements require the independent auditors to report not only on the fair presentation of the financial statements, but also on the Council's internal controls and compliance with legal requirements, with special emphasis on internal controls and legal requirements involving the administration of federal awards. These reports are presented in the Reporting Section of this report.

United States GAAP requires that management provide a narrative introduction, overview, and analysis to accompany the basic financial statements in the form of Management's Discussion and Analysis ("MD&A"). This letter is designed to complement the MD&A and should be read in conjunction with it. The Council's MD&A can be found immediately following the report of the independent auditors.

CSC Profile

The Children's Services Council of Broward County ("CSC") or ("Council") was approved by the voters of Broward County Florida by special referendum on September 5, 2000. Consequently, the Council was established as an Independent Special Taxing District by State Statute (Ch 2000-461 Laws of Florida) on January 2, 2001 and amended July, 2004.

Further, the Florida Legislature required reauthorization by the voters and in November 2014 the voters overwhelmingly and enthusiastically endorsed the work and worth of the CSC. The Council's mission is to provide the leadership, advocacy, and resources necessary to enhance children's lives and empower them to become responsible, productive adults through collaborative planning of a continuum of quality care. To accomplish this task, the statute allows for the Council to levy taxes up to .5 mills of the assessed property tax value.

The eleven Member Council is comprised of five (5) individuals recommended by the Broward County Board of County Commissioners and appointed by the Governor and six (6) members appointed by virtue of the office or position they hold within the community. Council Members are responsible for setting policies and prioritizing and approving program and administrative funding. Each member brings an understanding of the diverse and multi-cultural needs of the Broward community and a firm commitment to improving the welfare of children and their families.

The Council is not a component unit of any other governmental unit nor does it meet the criteria to include any governmental organization as a component unit. The jurisdiction of the Council is contiguous with Broward County, the second most populated county in the state and one of the most diverse counties in Florida. Interesting facts from the US Census Bureau include: Broward County is a minority-majority county with 39.2% White Non-Hispanic, 27.2% Black Non-Hispanic, 27.6% Hispanic or Latino and 6.0% other; 32.7% are foreign born, 33.4% were born in other cities in the United States and 33.9% are born in Florida. There are an estimated 1.9 million people living in Broward County, of which 407,171 are children (source: Census 2016).

Children's Strategic Plan Leadership

The Council has established a robust leadership role within the child serving community and continues to build partnerships and programs that place an emphasis on prevention. These efforts are research-driven with an emphasis on evidence-based practices and performance outcomes. The Council's goals and objectives are very closely connected to the CSC-led Broward County Children's Strategic Plan, which provides a valuable framework for the community to foster public dialog on trends and benchmarks and to develop action plans for system improvements. There are over 50 different working committees and subcommittees comprised of representatives from all facets of the Broward child-serving community who meet throughout the year, with the support of Council staff, to fill gaps and to find more efficient ways to provide needed services.

The Council utilizes Results Based Accountability ("RBA") to improve collaboration and transparency in reporting results to the community. Using this RBA framework, each Committee produces a one-page "story" (also known as a Turn the Curve Report) of the desired result, providing community indicator data, analysis of the trend and why progress moves up or down. This structure identifies community partners to help achieve the desired results, and action steps using evidence-based research and local wisdom about what works. Additionally, the Committees share their work with the Children's Strategic Plan Leadership Coalition comprised of local policy makers and civic leaders to address barriers that impact quality of life issues for Broward's children and families.

As part of this work, every few years the Council leads the convening of a Youth and Family Summit where stakeholders can take stock of the progress made over the intervening years, assess the work that remains to be done and be inspired and reenergized to continue the important work of improving the lives of all children and families in Broward.



In February 2017 the Council convened the Youth and Family Summit themed “Building a Better Broward: A shared Agenda for Children” where over 1,200 people attended, 400 of them high school students who participated in debate teams, performances and injected their voice in the sessions. Overall, the Summit was quite a success with over 80% very satisfied and satisfied with the day sessions and speakers. This event will

lay the groundwork for the next few years to continue improving the lives of children.

The Council continually enhances its technology to improve tracking and analysis of various data elements including performance-based outcomes and community impact data which is used to assess the performance of funded programs. A web-enabled database maintains provider and client data and accounts for the reimbursement of expenditures by unit of service. Additionally, the Council continues to collaborate with state and local agencies on data sharing initiatives and is in the process of building an Integrated Data System to enable compilation and analysis of aggregate outcome data. This comprehensive approach allows the Council to evaluate programs to ensure effectiveness. While national literature on social services’ return on investment is an emerging area of research, the Council is on the cutting edge of that initiative.

Budget and Fiscal Policy

The annual budget serves as the foundation for the Council’s financial planning and control. Council Members hold their annual retreat in May of each year to set the budget for the upcoming fiscal year. At that retreat they consider County-wide trend data, reaffirm existing goals or establish new goals based on the feedback from the on-going work of the various Committees from the County-wide Children’s Strategic Plan. Next, they assess fiscal and social return on investment data, and review the outcome and utilization history of funded goal areas. For those contracts that are performing well, they are renewed for the upcoming year. If any new goals or initiatives are identified, staff researches best practice, evidence-based programs to address any of these newly identified areas, procure specific services through the social service network, and assess the performance of programs to ensure the desired results are obtained. The Council revisits the May budget recommendations at their monthly meetings in June and August to ensure the final budget is aligned with the goals and objectives for the Truth-in-Millage (“TRIM”) hearings, as discussed below.

By statute, the Council must submit a tentative budget and millage rate to the Broward County Commission by July 1st. Once the final property tax values are determined by the Property Appraiser’s Office, the Council must hold two public hearings in September as required under the TRIM Act. Each year, following the required disclosures and the conduct of hearings for taxpayer comment, the Council Members set the final tax rates and adopt a budget. The budget is prepared by function and transfers of appropriation between programs require Council approval. Budget-to-Actual comparisons are provided in this report in the Financial Section. Encumbrance accounting is used to reserve

budgeted appropriations for obligations incurred but not yet received. All encumbrances lapse at year end.

Accountability to the taxpayer, as well as to the children and families that are served, remains a high priority of the Council. All funded programs are monitored using a dual approach: program experts including staff with advanced degrees and off-duty teachers and doctoral students, review the quality of the services delivered; and accountants monitor the administrative/financial functions. This dual methodology has been very successful; ensuring accountability while providing useful information that is used to improve program design, as well as to inform the training and technical assistance needs of funded providers.

Long term Financial Planning

Long-term financial planning for a government usually includes those aspects involved with capital budget, revenue and expenditure forecasts. The Council is somewhat limited regarding capital expenditures, as statute precludes incurring debt in any form. Eight years ago, the Council moved into its 31,500 square foot Silver LEED (Leadership in Energy and Environmental Design) headquarters building which was completely paid through Reserves. Four years later, the Council won The Outstanding Building of the Year (“TOBY”) award for governmental buildings by the Building Owners and Managers Association International. This award was developed to honor and recognize quality in office building operations and award excellence in office building management. The building has become a central place for community meetings and trainings; for fiscal year 2016/17, there were about 150 community meetings and training sessions held in the building. Since the building is sufficient to meet the Council’s needs for the foreseeable future, there are no large capital related expenditures on the horizon.

Economic Conditions and Outlook

South Florida is a wonderful place to live, work and raise a family. Broward County is the nation’s 8th largest metropolitan area and offers 23 miles of beaches coupled with the tropical climate, as well as a flourishing melting pot of cultural diversity (more than 32% of the County’s population are foreign born compared to an average of about 13% nationwide) add to the richness of the area. Broward County is a diverse multi-ethnic community with over 50 percent of residents considered minorities.

The local economy is strong with unemployment the lowest it has been in more than a decade. However, housing costs remain high with studies showing that Broward County is the most cost-burdened housing market in the nation. Cost-burden refers to the gap between wages and housing and if 30 percent of income is spent on housing. People who spend more than 50 percent are considered “severely cost-burdened” (Habitat for Humanity, 2017). Housing and transportation costs have risen faster than wages creating a disparity and South Florida unfortunately is number 1 in the nation.

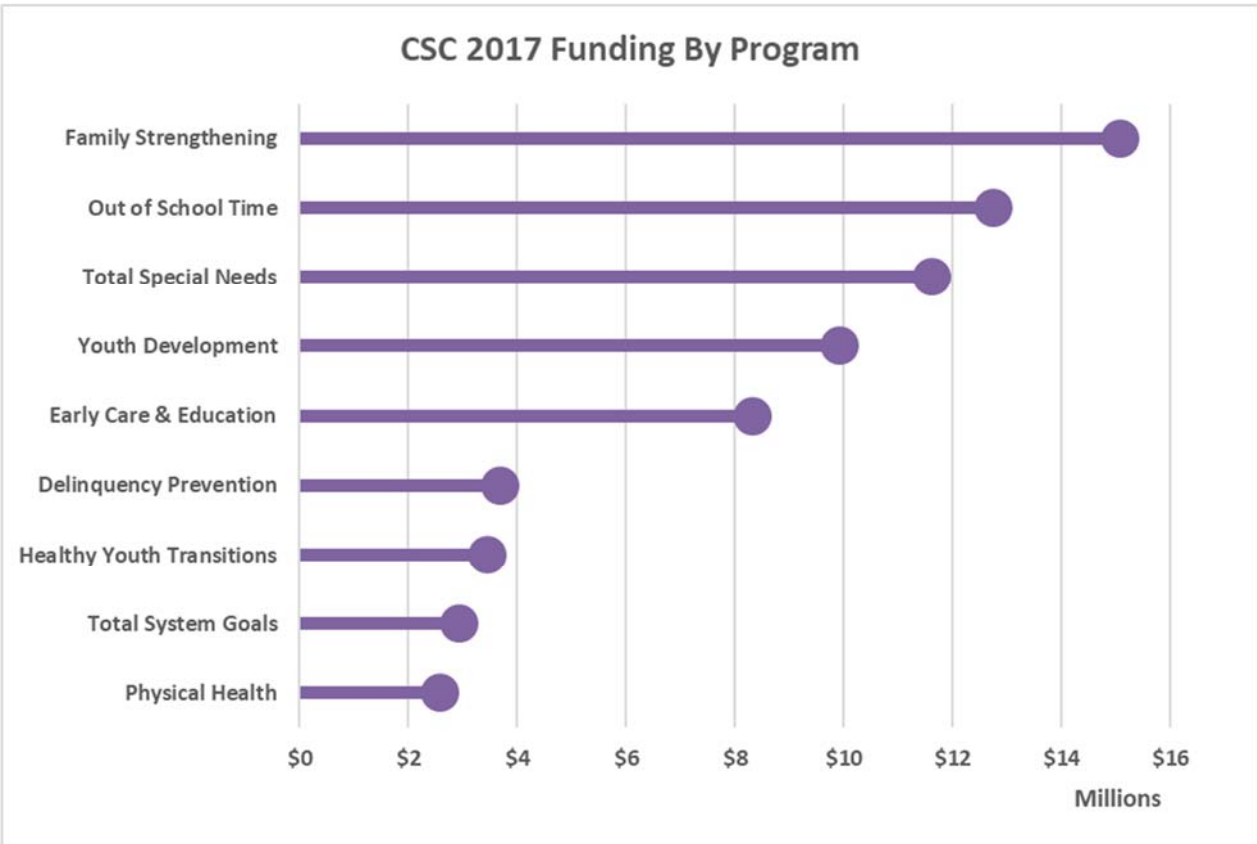
While the economy is strong in certain sectors, there remains a high demand for social needs throughout the community and these past few years continue to be no exception. Thus, it was much welcome news that the Council was able to grow its overall programs budget during this fiscal year by 8.7% because increased property values brought in additional revenue along with a judicious use of fund balance.

Broward County's good fortune related to hurricanes came to a close this past September when Hurricane Irma came rolling through Broward, the first hurricane to hit in twelve years. While the damage was not as severe as it could have been, there are pockets of the community that continue to suffer with the loss of housing and other basic needs. The County and various local agencies are working together to help these families get back on their feet. This hurricane reminded all of us in Broward how important it is to maintain a sense of preparedness, coupled with a strong infrastructure to provide vital community services as necessary.

The County's tourism rate continues to reflect a fairly strong presence of visitors to our community. The local airport and seaport help to bring more and more tourists to enjoy our beautiful county beaches and many other amenities. The airport ranks 21st in the United States in total passenger traffic and 13th in domestic origin and destination passengers. The seaport is one of the top three cruise ports in the country and Port Everglades is in the midst of the largest expansion in port history for both passenger cruise ships as well as cargo berths. Various marketing campaigns attract an increasingly diverse mix of domestic and international visitors and continues to receive high volumes of visitors coming to Broward County. The tourism into Broward County remained strong with over 12 million visitors in 2016, up 4 percent from last year. Broward's hospitality and tourism industry employed 168,000 people in hospitality related jobs.

The Council continues to strive to maximize services for Broward's children and families and has carefully used fund balance to maintain or grow needed programs, while maintaining a high level of accountability to the taxpayer. In recognition of our fiduciary responsibility to Broward taxpayers and to ensure funded agencies are well-positioned to meet their service obligations, the Council continues to use a fiscal viability test to verify that agencies have the necessary administrative infrastructure to successfully manage CSC funding. Provisions for smaller maximum funding awards and Fiscal Agent partnership opportunities were developed to help smaller and niche-organizations succeed in receiving Council funding while maintaining high standards for financial and administrative depth.

Expenditures for Program Services increased this past year with the provider agencies drawing down 92 percent of their budget. The Council's services for children and their families continues to provide a great community benefit while also providing an economic gain to the local economy by funding approximately 2,200 full time equivalent positions in the social services area. The chart below illustrates expenditures for Program Services for the fiscal year.



Major Initiatives

The Council had a very busy and productive year and is looking forward to building upon those successes to promote further gains for Broward’s children and families. Ninety-two percent of the annual \$82.6 million budget is allocated for children’s services and programs and the related support to serve approximately 150,000 children a year. Throughout this Comprehensive Annual Financial Report, there are financial highlights with explanations and analysis for the various programs. For instance, on page 110 is a ten year trend of programmatic expenditures by goal area and on page 3 in the Management’s Discussion and Analysis section there are specific programmatic highlights for some of the larger goal areas.

The Council also engages in various community partnerships and system building initiatives throughout the Community. Some significant highlights in this area include the following:

- ◆ In the second year of a three year Performance Partnership Pilot grants, one of only nine federal grants awarded. The original grant was for \$700,000 over 2½ years and in September of 2016, the Council received an additional \$175,000 to enhance the research component. The pilot’s objective is to use federal flexibility to make federal programs work better for young people. The Council named the program “Best Opportunities to Shine and Succeed” (BOSS) and will serve youth at risk of not graduating by providing case management, employment readiness, and post-secondary supports to 420 youth in high need high schools. In addition to the federal start-up funds, CareerSource Broward will fund \$1 million over 2½

years for case management services together with the Council and other community partners contributing towards the program for a total project cost of \$4.7 million.

The external evaluator's interim results for this program have demonstrated successful results. For example, statistically significant differences were realized for post-secondary enrollment – 82% of BOSS youth transitioned to a post-secondary institution as compared to 52% of youth in a control group, meaning BOSS youth are 60% more likely to transition to post-secondary institutions.

- ◆ Partnered with the School District, the Early Learning Coalition, County Commission, Afterschool and Preschool Providers, and others to take part in a community collaboration known as Broward Reads: The Campaign for Grade Level Reading. Using the Children's Strategic Plan infrastructure as noted on page iii, the Committee is comprised of dozens of active members from business, non-profit, philanthropic, 20 municipalities and other governmental sectors resulted in Broward being recognized as a 2016 Pacesetter Community by the National Campaign for Grade Level Reading. Noted successes include recruiting about 1,000 volunteers to read aloud to 40,000 four and five year olds from 79 voluntary pre-Kindergarten centers, over 100 schools and 1,500 Pre-K and Kindergarten classrooms as part of the Broward Reads initiative. The Council, with other partners purchased 40,000 books for over \$154,000 that were provided to the children so that they could begin their own library collection. Feedback from volunteer readers and the schools was overwhelmingly positive.

Other highlights from this Committee include Ft. Lauderdale being one of five cities selected by JetBlue and Scholastic Books as the recipient of 100,000 books as part of the Soar with Reading Campaign. These books were distributed free of charge and with unlimited access to children via "vending machines" that included a wide array of titles all summer long.

- ◆ For the past seven years, the Council, together with the School District, local businesses, other organizations and residents supported a Back to School Community Extravaganza to help students with their school supplies. The event continues to draw large numbers of children and families that need a little help with these expenses. The recipients of the backpacks are students identified by School District Social Workers as being economically disadvantaged. The event distributed 6,000 new backpacks filled with all types of school supplies, uniforms, shoes and gently used books. The CSC cost of the event was \$40,000 with \$73,200 donated from the community and another \$245,000 of in-kind donations of goods and services. There were over 100 volunteers, who came together to distribute the backpacks.
- ◆ The Council works closely with various community partners to prevent childhood hunger throughout Broward County. Last year the Council expanded its mobile Summer Breakspot program which builds on partnerships with multiple County partners to provide nutritious meals at multiple public housing and other community sites during the summer months when many children do not have access to food due to school not being in session. The Summer Mobile Breakspot program provided meals five days a week at nine housing authority and low-

income apartment sites and 72 additional sites throughout the County for a cost of \$56,500. This year's program expanded services to include drowning prevention, child safety, literacy, fitness and culturally enriching activities that benefited almost 21,000 children with 176,300 meals distributed. Outcomes of this innovative program include 51% of children improved their attitude towards reading and 41% improved their knowledge about nutrition. This program was able to draw down \$437,900 of USDA Reimbursement. With the success of the Mobile Breakspot program, the federal government has cited it as a best practice.

- ◆ The Council continued its efforts to create a seamless system of care for families with children with physical and developmental disabilities. The Special Needs Advisory Coalition ("SNAC") continues to create coalitions and workgroups to improve communication and access to services as identified in the Broward County Children's Strategic Plan. The SNAC is essential to advocate for the Special Needs population to ensure that needed services are recognized both at the State level as well as in Broward County. Additionally, for the 8th year, the Council through SNAC sponsored the "Transition to Life Summit" where 250 youth with special needs and their parents attended training workshops focused on self-advocacy, post-secondary planning and independent living skills. The event included a service component with an "Access to Benefits" session where participants could apply for services on the spot. The feedback for this workshop continues to be very positive.
- ◆ The Council has taken a leading role in addressing racial equity, implicit bias and gender identity issues. These subjects can be uncomfortable to talk about with young people and yet they are front and center in the national dialog. The Council, in partnership with the Broward County Human Services Department, the Fort Lauderdale Police Department, and others, brought a series of Undoing Racism® workshops by the People's Institute for Survival and Beyond to staff, local social services not-for-profit agencies, and community leaders. The two-and-a-half day workshops have been attended by over 325 human and social service professionals in the hope of removing barriers and improving the ability to raise children to become responsible productive adults. Many of the best practices learned in the workshops are being infused in the Council's procurements and policies and procedures.
- ◆ The Council leads an Agency Capacity Building Committee comprised of key community funders and service providers in an open dialog on concerns and issues related to funding and building capacity for emerging, niche, and community-based organizations serving children and their families. Resources are then provided to help address those needs. This Committee also provides input for the Council's training agenda.

The Council's budget for fiscal year 2016-2017 is \$82.6 million, which includes \$2.2 million budget carry forward from the prior fiscal year and \$3.2 million of fund balance. Using \$5.4 million of existing funds coupled with the increase in property values, the Council was able to increase the 2016-17 fiscal year budget for much needed programs and services without raising the millage rate. The Council continues to be very cognizant of limited resources and works diligently to serve the children and families in the most efficient and effective manner.

Certificate of Achievement for Excellence on Financial Reporting

The Government Finance Officers Association of the United States and Canada ("GFOA") awarded a Certificate of Achievement for Excellence in Financial Reporting to the Children's Services Council of Broward for its comprehensive annual financial report for the fiscal year ended September 30, 2016. This was the fifteenth consecutive year that the Council was eligible and received this prestigious award. In order to be awarded a Certificate of Achievement, a government must publish an easily readable and efficiently organized comprehensive annual financial report. This report must satisfy both generally accepted accounting principles and applicable legal requirements.

A Certificate of Achievement is valid for a period of one year only. We believe our current comprehensive annual financial report will meet the Certificate of Achievement Program's requirements and we are submitting it to the GFOA to determine its eligibility for another certificate.

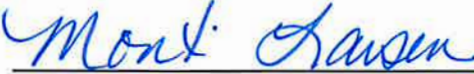
Acknowledgments

We extend our sincere appreciation to the Council employees who provide countless hours of research in the preparation and production of this report and the day-to-day work of the CSC. Special thanks go to the Council Members for their vision, expertise and dedicated service and support.

Respectfully Submitted,



Cindy J. Arenberg Seltzer
President/CEO

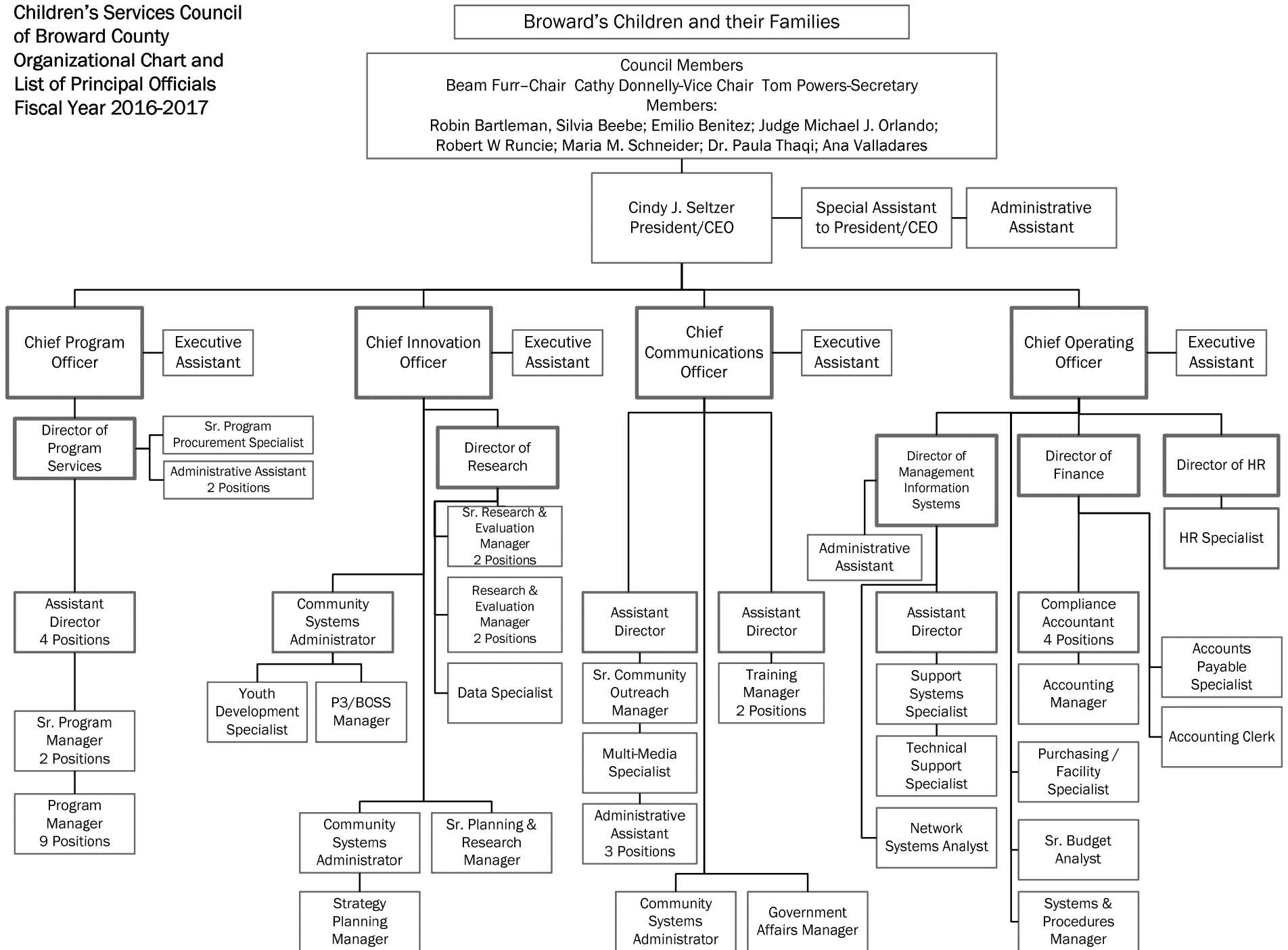


Monti Larsen
Chief Operating Officer



Kathleen Campbell
Director of Finance

Children's Services Council
of Broward County
Organizational Chart and
List of Principal Officials
Fiscal Year 2016-2017





Government Finance Officers Association

Certificate of
Achievement
for Excellence
in Financial
Reporting

Presented to

**Children's Services Council
of Broward County, Florida**

For its Comprehensive Annual
Financial Report
for the Fiscal Year Ended

September 30, 2016

Christopher P. Morvill

Executive Director/CEO



Financial Section





INDEPENDENT AUDITORS' REPORT

To the Members of the Council of
Children's Services Council of Broward County
Lauderhill, Florida

Report on the Financial Statements

We have audited the accompanying financial statements of the governmental activities and each major fund of the Children's Services Council of Broward County (the "Council") as of and for the fiscal year ended September 30, 2017, and the related notes to the financial statements, which collectively comprise the Council's basic financial statements as listed in the table of contents.

Management's Responsibility for the Financial Statements

Management is responsible for the preparation and fair presentation of these financial statements in accordance with accounting principles generally accepted in the United States of America; this includes the design, implementation, and maintenance of internal control relevant to the preparation and fair presentation of financial statements that are free from material misstatement, whether due to fraud or error.

Auditors' Responsibility

Our responsibility is to express opinions on these financial statements based on our audit. We conducted our audit in accordance with auditing standards generally accepted in the United States of America and the standards applicable to financial audits contained in *Government Auditing Standards*, issued by the Comptroller General of the United States. Those standards require that we plan and perform the audit to obtain reasonable assurance about whether the financial statements are free from material misstatement.

An audit involves performing procedures to obtain audit evidence about the amounts and disclosures in the financial statements. The procedures selected depend on the auditor's judgment, including the assessment of the risks of material misstatement of the financial statements, whether due to fraud or error. In making those risk assessments, the auditor considers internal control relevant to the Council's preparation and fair presentation of the financial statements in order to design audit procedures that are appropriate in the circumstances, but not for the purpose of expressing an opinion on the effectiveness of the Council's internal control. Accordingly, we express no such opinion. An audit also includes evaluating the appropriateness of accounting policies used and the reasonableness of significant accounting estimates made by management, as well as evaluating the overall presentation of the financial statements.

We believe that the audit evidence we have obtained is sufficient and appropriate to provide a basis for our audit opinions.

Opinions

In our opinion, the financial statements referred to above present fairly, in all material respects, the respective financial position of the governmental activities and each major fund of the Council, as of September 30, 2017, and the respective changes in financial position the fiscal year then ended in accordance with accounting principles generally accepted in the United States of America.

Emphasis of a Matter

As discussed in Note 1G to the basic financial statements, the Council implemented Governmental Accounting Standards Board (GASB) Statement No. 75, *Accounting and Financial Reporting for Postemployment Benefits Other Than Pensions*, as of October 1, 2016. As further discussed in Note 1G, the opening net position has been restated due to the implementation of this new standard.

Our opinion is not modified with respect to this matter.

Other Matters

Required Supplementary Information

Accounting principles generally accepted in the United States of America require that the Management's Discussion and Analysis, Budgetary Comparison, Pension and Other Post-Employment Benefits Schedules as listed in the table of contents on pages 3 to 25 and 76 to 85 respectively, be presented to supplement the basic financial statements. Such information, although not a part of the basic financial statements, is required by the Governmental Accounting Standards Board, who considers it to be an essential part of financial reporting for placing the basic financial statements in an appropriate operational, economic, or historical context. We have applied certain limited procedures to the required supplementary information in accordance with auditing standards generally accepted in the United States of America, which consisted of inquiries of management about the methods of preparing the information and comparing the information for consistency with management's responses to our inquiries, the basic financial statements, and other knowledge we obtained during our audit of the basic financial statements. We do not express an opinion or provide any assurance on the information because the limited procedures do not provide us with sufficient evidence to express an opinion or provide any assurance.

Other Information

Our audit was conducted for the purpose of forming opinions on the financial statements that collectively comprise the Council's basic financial statements.

The introductory and statistical sections are presented for purposes of additional analysis and are not a required part of the basic financial statements. The schedule of expenditures of federal awards is presented to additional analysis as required by Title 2 U.S. Code of Federal Regulations Part 200, *Uniform Administrative Requirements, Cost Principles, and Audit Requirements for Federal Awards*, and is also not a required part of the basic financial statements.

The schedule of expenditures of federal awards is the responsibility of management and was derived from and related directly to the underlying accounting and other records used to prepare the basic financial statements. Such information has been subjected to the auditing procedures applied in the audit of the basic financial statements and certain additional procedures, including comparing and reconciling such information directly to the underlying accounting and other records used to prepare the basic financial statements or to the basic financial statements themselves, and other additional procedures in accordance with auditing standards generally accepted in the United States of America. In our opinion, the schedule of expenditures of federal awards is fairly stated in all material respects in relation to the basic financial statements as a whole.

The introductory and statistical sections has not been subjected to the auditing procedures applied in the audit of the basic financial statements and, accordingly, we do not express an opinion or provide any assurance on them.

Other Reporting Required by Government Auditing Standards

In accordance with *Government Auditing Standards*, we have also issued our report dated March 15, 2018, on our consideration of the Council's internal control over financial reporting and on our tests of its compliance with certain provisions of laws, regulations, contracts, and grant agreements and other matters. The purpose of that report is to describe the scope of our testing of internal control over financial reporting and compliance and the results of that testing, and not to provide an opinion on internal control over financial reporting or on compliance. That report is an integral part of an audit performed in accordance with *Government Auditing Standards* in considering the Council's internal control over financial reporting and compliance.

Caballero Fierman Llerena + Garcia, LLP

Caballero Fierman Llerena + Garcia, LLP
Coral Gables, Florida
March 15, 2018

CHILDREN'S SERVICES COUNCIL OF BROWARD COUNTY

Management's Discussion and Analysis Fiscal Year Ended September 30, 2017

Our discussion and analysis of the Children's Services Council of Broward County ("Council") or ("CSC") financial performance provides an overview of the Council's financial activities for the fiscal year ending September 30, 2017. Please read it in conjunction with the transmittal letter on page i and the Council's financial statements, which begin on page 26.

FINANCIAL HIGHLIGHTS

Fiscal year ending September 30, 2017 concludes the Council's sixteenth year of funding services that support children and families through programs emphasizing prevention. This report highlights how the Council provides leadership, advocacy and resources working with community partners and investing in evidence-based interventions and services for children and families throughout Broward County. About 200 programs are delivered by just under 100 community organizations who share the Council's mission/vision, commitment to children and expectations for excellence.

The following illustrates some of the Council's financial highlights for the fiscal year:

- ◆ Assets and deferred outflows exceeded liabilities and deferred inflows at the close of fiscal year 2016/17 by \$19.4 million (total net position). Of this amount, \$12.1 million represents unrestricted net position, which may be used to meet the government's ongoing obligations to citizens and providers.
- ◆ The Council's total net position increased by \$1,368,256 which represents an eight percent increase. Revenues increased due to higher property values which resulted in additional ad valorem tax revenue. These additional revenues allowed an 8.7% growth in program services.
- ◆ At the close of the fiscal year, the Council's governmental funds reported a fund balance of \$16.1 million, an increase of 15% or \$2,091,254 from the prior year. The increase is due to additional tax revenues and a slight under-utilization from the provider contracts. Of this \$16.1 million fund balance, an increase of \$2 million or 24% from the prior year, \$10.5 million is available for spending at the Council's discretion (*unassigned fund balance*). However, this Unassigned Fund Balance includes \$7.9 million that is maintained as minimum fund balance following best practice policy per the GFOA. The *assigned fund balance* decreased by \$36,648 or 1% from the prior year for the subsequent year's budget priorities (FY 17/18).

CHILDREN'S SERVICES COUNCIL OF BROWARD COUNTY

Management's Discussion and Analysis Fiscal Year Ended September 30, 2017

- ◆ Levied tax revenue generated through the TRIM process totaling \$75.9 million, which was a notable increase of \$5.7 million or 8.1% from the prior year. This increase was attributable to higher property values throughout the County; yet, the millage rate remained unchanged. Although the increase was noteworthy, the needs of the community for preventive, evidence-based children's services remain quite high as the Council and Community continue to strive to meet them.
- ◆ Comparing Fiscal Year 16 to Fiscal Year 17, the Council's total operating budget increased \$7.09 million or 9.3%. This increase continues an upward trend after several years of either stagnant or declining operating budgets. The Council is cautiously optimistic that this year's increased budget is a sign property values are becoming more stable. The improving economic conditions will help to provide additional community resources for those areas that continue to struggle economically.
- ◆ The Council appropriated \$5.4 million of fund balance and budget carry-forward in Fiscal Year 16/17 to help offset tax increases while maintaining or expanding much needed programmatic services. The Council has historically used a portion of fund balance for this purpose. With this budget increase, many programmatic goal areas were increased based on specific needs identified with input from the county-wide Children's Strategic Plan Committee. Moreover, all programs funded by the Council remain evidenced-based and continue to demonstrate strong performance outcomes.

The following highlights key examples of the Council's goals and objectives for various initiatives:

- Out of school program expenditures total \$11.7 million for elementary age children who are economically disadvantaged and represents 18.06% of the overall program budget, and a slight 3% decrease of \$349,364 from the prior year. These resources allow the Council to provide programs for children to participate and help parents know that their children are safe and productive after school and on non-school days. These after school and summer programs serve low income, typically developing children attending highest need Title I schools.

CHILDREN'S SERVICES COUNCIL OF BROWARD COUNTY

Management's Discussion and Analysis Fiscal Year Ended September 30, 2017

These programs are supported by impressive performance outcomes:

- 84% of students improved their reading;
- 78% of students improved their math skills;
- 100% of students remained safe.

Services are provided by 24 agencies at 106 school and community-based locations throughout the County, serving over 8,500 children in the general and special needs population.

Additionally, the Council provides out-of-school time programs for children with Special Needs which includes those children and youth with special physical, developmental and behavioral conditions. The programs offer a safe, positive environment afterschool and during the summer that enhance academic achievement, support social, developmental and physical activities and provide educational field trips and cultural arts opportunities. Flexible and individualized staff-to-child ratios promote effective interaction with each child. Expenditures for these programs totaled \$8.6 million, a 3% increase from the prior year. The performance outcomes highlight 84% of special needs children improved in reading and language development in school year 16-17 and 100% of children remained safe.

- The Council significantly expanded youth development programs by four additional locations for a total of 26 sites. Funding for Youth FORCE programs (middle school students) increased by 10% or \$786,800. Services in this goal area target high risk middle school students, including youth with behavioral health and other special needs. This is a challenging age group to keep engaged and the Youth FORCE programs do an excellent job of creating environments where youth can learn to make positive choices and develop skills that will serve them for life. These year-round programs are located at the highest need middle schools as identified by the School District based on factors such as poverty, school grades, disciplinary actions, delinquency referral rates and unexcused absenteeism. Outcomes include: 100% of female youth did not become pregnant and male youth did not cause pregnancy and 99% youth did not obtain any new law violations while in the program.

CHILDREN'S SERVICES COUNCIL OF BROWARD COUNTY

Management's Discussion and Analysis Fiscal Year Ended September 30, 2017

- To round out the school-based age continuum, the Council partnered with the Florida Department of Education ("FDOE") as the recipient of multiple 21st Century Community Learning Centers ("21st CCLC") grants. Additionally, in 2015 the Council was awarded one of only nine nation-wide awards for a Performance Partnership Pilot ("P-3") grant from the US Department of Education of \$700,000 over two years with an additional award of \$175,000 granted in August 2016 to enhance the research component. The P-3 grant is designed to "test innovative, outcome-focused strategies to achieve significant improvements in educational, employment, and other key outcomes for disconnected or disengaged youth using new flexibility to blend existing Federal funds and to seek waivers of associated program requirements." This was a great opportunity to braid the 21st CCLC programs with Workforce Innovation Opportunity Act ("WIOA") funding to create the P-3/BOSS ("Best Opportunities to Shine and Succeed"). This program model creates year-round high school enrichment programs that provide a broad array of activities to support and complement student's regular academic programs including Science, Technology, Engineering Math ("STEM") focus, with the BOSS model adding the use of tiered case managers. Tiered case management individually links at-risk youth with the evidence-based and evidence informed educational, employment, and personal development services needed to graduate and achieve post-secondary success. Transportation and USDA snacks are provided by the School District.

It has been the Council's practice that as FDOE funding sunsets, the Council continues to provide services for these low performing high schools. The Council is one of only a handful of agencies nationwide that are able to sustain these very important programs; there are now eight high schools that are fully sustained through Council funding for an annual total of \$866,198. In fiscal year 2016-17, LEAP High and 21st CCLC programs were offered at 11 low performing high schools within the County. There were 500 students who participated in BOSS programs at six of the 11 high schools. At the end of the two-year period, results will be compared between 21st CCLC model,

CHILDREN'S SERVICES COUNCIL OF BROWARD COUNTY

Management's Discussion and Analysis Fiscal Year Ended September 30, 2017

the P-3 BOSS schools and the CSC sustained schools to inform the grantor and community which model works best to serve these at-risk youth.

All of these high school programs provide structured academic support services that empower students to meet/exceed state accountability standards and graduation rates; opportunities for comprehensive educational outreach; cultural, recreational and enrichment activities to increase attendance, reduce drug/alcohol abuse, teen violence, and expose families to literacy and other needed community resources. Outcome results for this challenging age group speak for themselves: 86% of youth improved reading grades; 82% improved math grades; 81% improved science grades; and 99.5% improved their day school behavior.

- It is often difficult for youth to find meaningful summer employment opportunities even as economic conditions continue a sluggish and uneven recovery. The Council funds the Summer Youth Employment Program ("SYEP"), providing young people 16-18 years old who participate in CSC High School programming, are economically disadvantaged or aging out of foster care the opportunity to improve their workplace skills with real job experience, earning minimum wage. The Council continues to increase its commitment to this goal while maintaining the total numbers served and absorb increases in minimum wage. SYEP programs provided employment opportunities for over 600 teens at 160 different job sites. Program attributes include soft-skills training, a streamlined job placement process that considers job preference, proximity to the work site, transportation, work hours and background requirements in the job placement process. Enhancements include cultural diversity and ensuring youth in other CSC-funded programs are afforded the opportunity to participate.

Program outcomes remain quite strong as 99% of youth successfully completed the program; 85% demonstrated employability and job skills proficiency; and 98% of employers reported satisfaction with the youth employees and overall program administration.

CHILDREN'S SERVICES COUNCIL OF BROWARD COUNTY

Management's Discussion and Analysis Fiscal Year Ended September 30, 2017

- The Council funds innovative programs that form a continuum of care for high school teens with physical and developmental disabilities. Supported Training and Employment Program ("STEP") provides year-round support for youth to learn independence, social skills, daily living skills and provide the chance to explore career opportunities through hands-on learning experiences. Once skills are mastered, youth are given the opportunity to demonstrate those new skills in various work environments. The STEP programs provide 183 young people with disabilities with job training and summer employment, supported by on-site professional "job coaches" at approximately 45 worksites countywide. For the majority of youth, it is the first time they experienced the "workplace world" and an opportunity for independence. For the first time, many parents see potential for independence for their children and employers see the benefits for both the youth and business co-workers.

The Youth Work Incentive Counseling ("Y-WIC") component of the program serves as a resource for both the participants and families by extending support and guidance. This service breaks down barriers for youth with special needs to help them and their families understand how employment might impact their Social Security and other benefits. Over the years, several youth have been able to successfully transition to a non-supported work environment after completing 1 or 2 summers in the STEP program. Expenditures for this program slightly increased by \$36,700 from the prior year, with a total commitment of \$2 million. Program outcomes remain quite strong as 86% of youth acquired measurable skills in work required behavior; and 92% acquired measurable skills in daily living activities and job duties.

- New Delinquency Alternatives for Youth or "New DAY," programs help young offenders with less serious law violations to be diverted from the juvenile justice system and learn a "life lesson" rather than be stigmatized by the delinquency system – a mark which carries into adulthood. This and other juvenile diversion program expenditures total \$3.5 million which is on par with the prior year's expenditures. The program served 1,600 youth in fiscal year 2017.

CHILDREN'S SERVICES COUNCIL OF BROWARD COUNTY

Management's Discussion and Analysis Fiscal Year Ended September 30, 2017

The successful outcomes for this program include: 83% of all youth referred by the State Attorney successfully completed all diversion requirements which typically include civil citations, community service, apology letters and/or restitution to victims, counseling to give youth a second chance, etc. Of those youth, 89% have stayed out of trouble with the law for at least one year after program completion.

- The Council's steadfast commitment to reducing the incidence of child abuse and neglect within the community is supported by their long-term funding commitment for Family Support programs. The budget for Family Support programs had a slight 1% increase to continue to address the complex needs of the community. This goal comprises 21% of the overall program budget for a total commitment of \$15 million and serves over 4,000 families annually.

Family Support programs focus on at-risk and high-risk families who receive intensive in-home family therapy, parent training, case management, relative caregiver support and other support services to prevent out-of-home placements. Additionally, this goal supports programs designed to decrease pre/post-natal depression, promote maternal/child bonding, provides training for therapists working with substance-exposed newborns and other maternal/child education supports including safe sleeping.

The Council works closely with a network of community partners involved in the child welfare system to coordinate resources, expedite service delivery and share case and resource information. Performance measures for these programs continue to demonstrate strong results: 100% of caregivers demonstrated decreased level of parenting stress, 88% of families participated in all program requirements, 100% of mothers reported fewer symptoms of depression and 94% of mothers demonstrated improvement or acceptable levels of attachment and bonding with their infant.

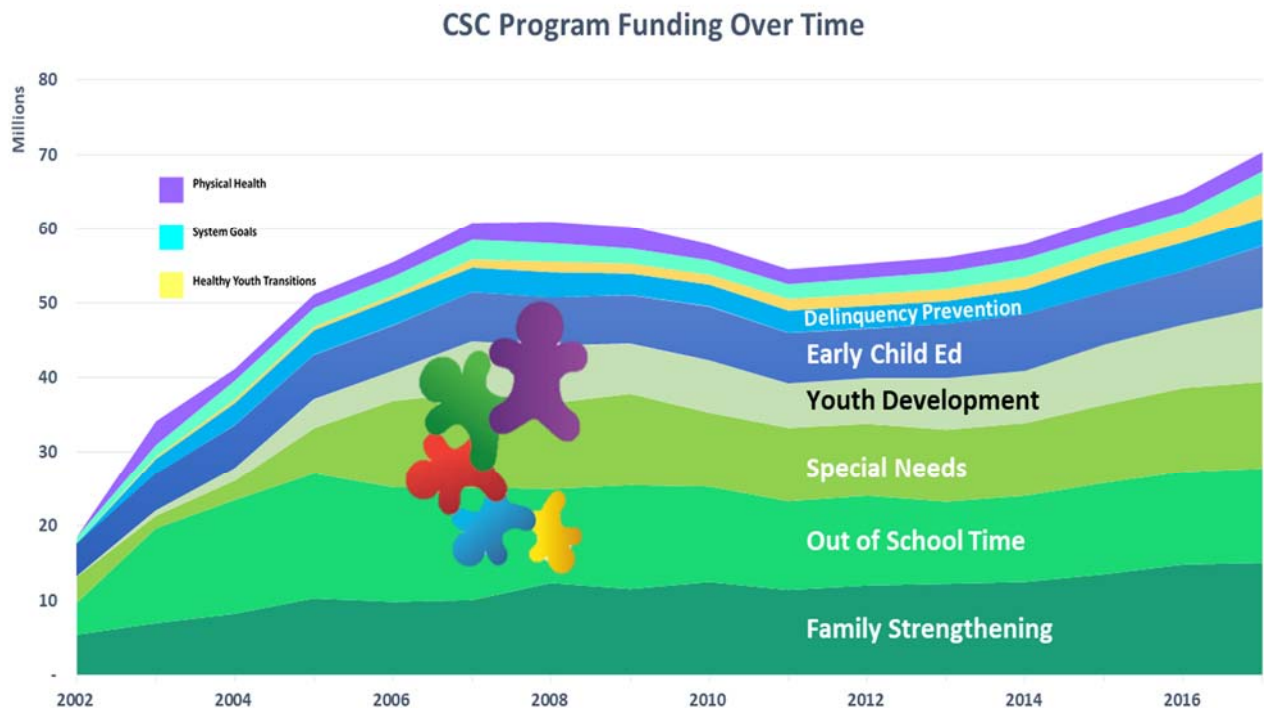
- The Council released ten procurement documents this past fiscal year including Request for Proposals ("RFP"), Request for Qualifications ("RFQ") and Request for Letters of Interest ("RLI") to continue programmatic services, aid in public affairs outreach

CHILDREN’S SERVICES COUNCIL OF BROWARD COUNTY

Management’s Discussion and Analysis Fiscal Year Ended September 30, 2017

and improve operations. Issuing new procurements provides opportunities for new program elements or evidence-based practices identified through the Council’s “lessons learned” approach to continuous quality improvement. The procurements included: Maximizing Out of School Time (MOST); Legal Representation for Youth in the Child Welfare System; Learning Together; Respite; Building an Integrated Data System; Breakspot Program Evaluation; Trainer Cadre; Mini Grants; Website Design and Development and Auditor Services.

The chart below depicts program expenditures by goal since inception in 2001.



USING THIS ANNUAL REPORT

This annual report consists of a series of financial statements. The Statement of Net Position and the Statement of Activities (on pages 26 and 29) provide information about the activities of the Council as a whole and present a long-term view of the Council’s finances. Fund financial statements begin on page

CHILDREN'S SERVICES COUNCIL OF BROWARD COUNTY

Management's Discussion and Analysis Fiscal Year Ended September 30, 2017

30. For governmental activities, these statements tell how these services were financed in the short term as well as what remains for future spending. Fund financial statements also report the Council's operations in more detail than the government-wide statements by providing information about the Council's most significant funds. The notes to the financial statements (on pages 35 – 73) provide additional information that is essential to a full understanding of data provided in the government-wide and fund financial statements, and is required by the United States Generally Accepted Accounting Principles ("GAAP"). This report also contains other required supplementary information in addition to the basic financial statements starting on page 76.

OVERVIEW OF THE FINANCIAL STATEMENTS

Government-wide Financial Statements

The government-wide financial statements are designed to provide readers with a broad overview of the Council's finances in a manner similar to a private-sector business. These statements include all assets and deferred outflows and liabilities and deferred inflows using the accrual basis of accounting, which is similar to the accounting used by most private-sector companies. All of the current year's revenues and expenses are taken into account regardless of when cash is received or paid.

For financial reporting purposes, the Council is considered a special-purpose government engaged in a single governmental program. As such, the Statement of Activities is presented utilizing the alternative format presenting a single column that reports expenses first followed by revenues.

The *Statement of Net Position* presents information on all of the Council's assets and deferred outflows and liabilities and deferred inflows, with the difference between reported as *net position*. Over time, increases or decreases in net position may serve as a useful indicator of whether the financial position of the Council is improving or deteriorating.

The *Statement of Activities* presents information showing how the government's net position changed during the most recent fiscal year. All changes in net position are reported as soon as the underlying event giving rise to the change occurs, regardless of the timing of the related cash flows. Thus revenues and expenses are reported in this statement for some items that will only result in cash flows in future fiscal periods (e.g., uncollected taxes and earned but unused vacation leave).

CHILDREN'S SERVICES COUNCIL OF BROWARD COUNTY

Management's Discussion and Analysis Fiscal Year Ended September 30, 2017

The Council remains current in its implementation of all GASB Statements. This year the Council early implemented GASB Statement No. 75 *Accounting and Financial Reporting for Postemployment Benefit Other Than Pensions*. The effects of this statement has a considerable effect on the government-wide financial statements. These standards impact the financial reporting related to pensions and other postemployment benefits (OPEB), (see Notes 7 and 8 on pages 55 and 66) and require the Council to recognize the OPEB liability.

These two statements report the Council's net position and changes in net position. You can think of the Council's net position—the difference between assets and deferred outflows and liabilities and deferred inflows—as one way to measure the Council's financial health, or financial position. However, a decrease in net position over the next few years is not necessarily an indication of deteriorating financial health. It is anticipated that net position will decrease over the next few years as the Council very carefully weighs the local economic environment with the need for services, and strategically uses fund balance to offset rising millage rates as well as growing programs in identified areas where the community need is greatest.

As mentioned under the Financial Highlights section, property values increased in most areas of the county an average of 8%. While the Council maintained the millage rate from the prior year, because of the increased property values, the net result was an additional \$5.7million of tax revenue available for children's services. This substantial increase in property values was very welcome news as the South Florida area was deeply affected by the economic recession; however, many families continue to experience a very high housing cost-burden with affordable housing.

In the Statement of Activities, the Council's expenses are presented in two primary categories: Program Services and General Administration. The Program Services category includes expenses that directly fund provider agencies for services to children and families, as well as the related support to manage these contracts. The General Administration category is self-explanatory and includes those common support expenses.

CHILDREN'S SERVICES COUNCIL OF BROWARD COUNTY

Management's Discussion and Analysis Fiscal Year Ended September 30, 2017

Fund Financial Statements

A *fund* is a grouping of related accounts that is used to maintain control over resources that have been segregated for specific activities or objectives. The Council, like other state and local governments, uses fund accounting to ensure and demonstrate compliance with finance-related legal requirements. All of the funds of the Council are categorized as governmental funds.

Governmental funds — All of the Council's basic services are reported in governmental funds, which focus on how money flows into and out of those funds and the balances left at year-end that are available for spending. These funds are reported using an accounting method called modified accrual accounting, which measures cash and all other financial assets that can readily be converted to cash. The governmental fund statements provide a detailed short-term view of the Council's general government operations and the basic services it provides.

Governmental fund information helps to determine whether there are more or fewer financial resources that can be spent in the near future to finance the Council's programs. The reconciliation statement describes the differences between government-wide activities (reported in the Statement of Net Position and the Statement of Activities) and governmental funds (reported in the Balance Sheet and the Statement of Revenues, Expenditures and Changes in Fund Balance) at the end of the related fund financial statement.

While some funds are required to be established by State law, currently the Council uses the General Fund and Special Revenue Fund as defined by the Governmental Accounting Standards Board ("GASB") Statement No. 54 *Fund Balance Reporting and Governmental Fund Type Definitions*. These standards clarify how governments account for various transactions and are incorporated in these financial statements. Additionally, all governments are required to present consistent fund balance information which will improve financial reporting. More information on the fund balance categories and the respective amounts can be found in the Notes to the Financial Statements beginning on page 42.

The General Fund is used to account for all financial resources except those required to be reported in another fund. The Special Revenue Fund is used to account for federal grants. During the fiscal year the Council

CHILDREN'S SERVICES COUNCIL OF BROWARD COUNTY

Management's Discussion and Analysis Fiscal Year Ended September 30, 2017

had two grants from the Department of Education Twenty-First Century Community Learning Centers ("21st CCLC") program awarded directly from Florida Department of Education ("FDOE"). Additionally, the Council was one of only nine proposals nationwide that was awarded a federal Performance Partnership Pilot ("P-3") award wherein the Council's application was the top scored proposal. The goal of this two-year grant opportunity is to remove barriers from various federal agencies and streamline funding sources to improve outcomes for disengaged youth.

The Council adopts an annual appropriated budget for all of its funds. Budgetary comparison schedules have been provided for both funds and can be found starting on page 76 of the report.

Notes to the Financial Statements

The *Notes to the Financial Statements* provide additional information that is essential to a full understanding of the data provided in the government-wide and fund financial statements. The Notes to the Financial Statements can be found on pages 35 - 73 of this report.

Required Supplementary Information

In addition to the basic financial statements and accompanying notes, this report also presents certain *required supplementary information*. The individual fund statements with budget to actual comparisons, other postemployment benefits plan information and pension plan information are found on pages 76 to 85 of this report.

GOVERNMENT-WIDE FINANCIAL ANALYSIS

As noted earlier, net position may serve, over time, as a useful indicator of a government's financial position. In the case of the Council's sixteenth year of generating tax revenue, assets and deferred outflows exceeded liabilities and deferred inflows by \$19.4 million at the close of the fiscal year.

As property values fluctuate and the Council's ability to increase its millage rate is constrained by State statute, it is anticipated that net position will decrease over time. This is not an indication of the Council's deteriorating financial condition.

This current year there was an increase in total net position as explained below.

CHILDREN'S SERVICES COUNCIL OF BROWARD COUNTY

Management's Discussion and Analysis Fiscal Year Ended September 30, 2017

CSC's Summary Net Position As of September 30,

	FY 2017	FY 2016	Variance
Current Assets	\$ 25,475,073	\$ 19,320,266	\$ 6,154,807
Capital Assets	7,284,713	7,420,106	(135,393)
Total Assets	32,759,786	26,740,372	6,019,414
Deferred Outflows	2,701,600	1,976,476	725,124
Current Liabilities	9,362,349	5,293,606	4,068,743
Noncurrent Liabilities	6,319,790	5,439,029	880,761
Total Liabilities	15,682,139	10,732,635	4,949,504
Deferred Inflows	363,813	36,172	327,641
Net Position:			
Investment in Capital Assets	7,284,713	7,420,106	(135,393)
Unrestricted	12,130,721	10,527,935	1,602,786
Total Net Position	\$ 19,415,434	\$ 17,948,041	\$ 1,467,393

- ◆ The overall net position of the Council increased for fiscal year 2017 by more than eight percent. The net increase of \$1,467,393, is attributable to net effect of higher cash and investments from increased property values resulting in more tax revenues, in addition to the implementation of GASB Statement No. 75, which increased beginning net position by \$99,137, offset by the OPEB liability and the Council's proportionate share of the State of Florida net pension liability.
- ◆ The change in current assets from Fiscal Year 2016 to Fiscal Year 2017 totaled \$6,154,807. This increase is primarily due to higher cash, investments and accounts receivable from grants.
- ◆ Investment in Capital Assets decreased from the prior year. Net changes in this line item of \$135,393 relates to purchases, depreciation of various capital assets such as furniture, software and computer equipment that were purchased or coming off the schedule per their life cycle. Once it is determined that the capital assets are no longer useful, they are donated to a local foundation that works with children and adults with developmental disabilities to recycle/refurbish electronic equipment.

CHILDREN'S SERVICES COUNCIL OF BROWARD COUNTY

Management's Discussion and Analysis Fiscal Year Ended September 30, 2017

Total depreciation expense was \$346,838, of which \$200,130 was building related, \$33,339 was for Intangible software enhancements and \$113,369 was for computer hardware and software and furniture and equipment.

- ◆ Deferred outflows of resources represent a consumption of net position that is applicable to a future period reporting the FRS and HIS pension liabilities and related components with other funds within the state. At fiscal year end, the Council recognizes its allocated proportional share of the state's deferred outflows of resources related to applicable pensions, as determined by the Florida Department of Financial Services, Statewide Financial Reporting Section.
- ◆ The current liabilities category is comprised primarily of accounts payable, which increased significantly by \$4,068,743, and is chiefly due to the timing of provider invoices for September services. The effects of Hurricane Irma resulted in delays in the providers submitting the final invoices for the year. The noncurrent liabilities category reflects an increase of \$880,761 which is primarily due to recognizing the proportionate share of the Florida Retirement System liability, the net Other Post-Employment Benefits (OPEB) liability for eligible retirees for health insurance "implicit subsidy" premiums that may be paid in the future, as well as compensated absences, due to additional personnel costs.
- ◆ Deferred inflows of resources represent an acquisition of net position by the division that is applicable to a future reporting period. The Council shares the reported FRS and HIS pension liabilities and related components with other funds within the state. At fiscal year end, the Council recognizes its allocated share of the state's deferred inflows of resources related to applicable pensions, as determined by the Florida Department of Financial Services, Statewide Financial Reporting Section.
- ◆ Unrestricted net position increased by \$1,602,786 from the prior year primarily because of the increased assets as described above. Higher tax revenues due to increased property values resulted in additional cash and investments, coupled with a positive change in net position as provider utilization was slightly low.
- ◆ With respect to debt, the Council is prohibited, per Florida State Statute, from issuing any type of debt instrument including the issuance of bonds of any nature.

CHILDREN'S SERVICES COUNCIL OF BROWARD COUNTY

**Management's Discussion and Analysis
Fiscal Year Ended September 30, 2017**

Key elements of the Council's changes in net position are as follows:

	Fiscal Years Ended September 30,		
	FY 2017	FY 2016	Variance
Revenues:			
Property Taxes	\$ 75,990,468	\$ 70,246,887	\$ 5,743,581
Investment Earnings	419,042	155,748	263,294
Other	2,598,854	2,475,677	123,177
Total Revenues	<u>79,008,364</u>	<u>72,878,312</u>	<u>6,130,052</u>
Expenses:			
Program Services & Support	71,587,846	67,379,943	4,207,903
General Administration	3,270,222	2,942,197	328,025
Tax Collector and Community Redevelopment Fees	<u>2,782,040</u>	<u>2,393,301</u>	<u>388,739</u>
Total Expenses	<u>77,640,108</u>	<u>72,715,441</u>	<u>4,924,667</u>
Increase (Decrease) Net Position	1,368,256	162,871	1,205,385
Net Position - Beginning Balance	17,948,041	17,785,170	162,871
Restatement of Net Position for GASB No. 75	<u>99,137</u>	<u>-</u>	<u>99,137</u>
Net Position - End of Year	<u>\$ 19,415,434</u>	<u>\$ 17,948,041</u>	<u>\$ 1,467,393</u>

- ◆ **Property taxes** are the Council's primary source of revenue. For fiscal year 2017, property tax revenue significantly increased by \$5.7 million from the prior year attributable to increased property values. While the millage rate remained unchanged from the prior year's 0.4882 mills, additional tax revenue was generated due to an 8% increase in property values. Property values in South Florida are continuing an upward trend with an average increase of 6.56% over the past three years; hence, additional tax revenues. Although the Council is authorized to levy up to .5 mills, the Council Members remain quite concerned about millage rate increases and its effect on taxpayers. The Council continues to utilize fund balance in order to not reduce services that meet the identified needs for Broward County's children.

CHILDREN'S SERVICES COUNCIL OF BROWARD COUNTY

Management's Discussion and Analysis Fiscal Year Ended September 30, 2017

- ◆ **Investment earnings** totaled \$419,042, an increase of \$263,294 in Fiscal Year 2017, which is a notable 169% increase from the prior year. The increase is due to higher interest earned on additional investments, partially due to higher property tax revenues.
- ◆ **Other revenue** includes grants, local foundations, training registration and miscellaneous revenue and for the current year equals \$2,598,854, a 5% increase from the prior year. The increase primarily stems from an increase in local foundation grants and local collaborative events such as the Back-to-School Extravaganza, the Racial Equity-Undoing Racism Initiative and Broward Reads program.

Within this classification includes \$1,398,945 from various federal through state grants related to the Performance Partnership Pilot Agreement ("P-3"), 21st Century Community Learning Centers grant ("21st CCLC") and Federal Title IV-E Foster Care and Adoption Programs through an agreement with State of Florida Department of Children and Families. This amount is a 16% decrease of \$224,561 for the fiscal year as this was the first year of implementing the P-3 pilot program during the middle of the fiscal year.

Additional Other Revenue sources total \$975,348 and includes partnerships with local foundations; a pass-through Collaborative Agreement with other Statewide CSC's; training registration fees; community initiatives wherein contributions were collected such as a Back-to-School Backpack Extravaganza drive, the Racial Equity-Undoing Racism Initiative and local Broward Reads initiative; along with various miscellaneous revenues.

- ◆ **Expenses for Program Services and Support**, which includes program related administration, totaled \$71.6 million in fiscal year 2017; an increase of \$4.2 million or 6.25%. This rather substantial increase was budgeted accordingly to the funded agencies (contract utilization is described on page 23), thus demonstrating a thorough programmatic reach, and additional staff were added to help manage the increased workload. The graph on the following page illustrates, 92.2% of total expenses support various programs and support services for children and families of Broward County.
- ◆ **Expenses for General Administration** totaled \$3.2 million in fiscal year 2017, an increase of \$329,801 or 11% increase from fiscal year 2016. This increase is primarily the result of increased salary and benefit expenses including pension expense as recognized from the proportional share of the Florida Retirement System plan (see note 7). However, general administrative

CHILDREN'S SERVICES COUNCIL OF BROWARD COUNTY

Management's Discussion and Analysis Fiscal Year Ended September 30, 2017

costs represent 4% of the overall expenses, which demonstrates the Council's fiscal prudence, a very resourceful staff and effective use of technology. The Council's focus continues to be providing services throughout the community with minimal administration costs. The non-staff expenses for General and Administrative remained relatively flat for fiscal year 2017 with slight increases for travel, telecommunications, software maintenance, etc.

- ◆ **Tax Collector and Community Redevelopment fees** for fiscal year 2017 increased substantially by 16.2% or \$388,739 for a total of \$2.8 million. The Community Redevelopment fees increased \$355,167 or 18.2% due to the higher property values within those specific areas of the county. The Tax Collector fees are based on the operating budget of the Property Appraisers Office and are allocated among the taxing districts. These fees increased \$33,571 or 7.6% from the prior year.

The Community Redevelopment Agency (CRA) tax increment fees are tied to the increased incremental property tax values in specific areas, as well as the Council's established millage rate. Generally throughout the County, property values within the CRA districts are experiencing quite a rebound as reflected in the substantial increases. In those districts wherein the Council and the CRA have formed a partnership, \$1,063,373 CRA fees were used for programs and services for children in lieu of fees. These successful collaborations between the Council and many of the CRA Districts have been able to place programs and services for children in these targeted communities. Additionally, the Council continues to negotiate with the CRA's in an ongoing effort to dedicate this funding for children's services in those respective areas.

CHILDREN'S SERVICES COUNCIL OF BROWARD COUNTY

Management's Discussion and Analysis Fiscal Year Ended September 30, 2017

The illustration below depicts the total CSC expenses, by percentage, for fiscal year ended September 30, 2017.



Analysis below separately considers the operations of governmental activities.

FINANCIAL ANALYSIS OF THE GOVERNMENTAL FUND

As the Council completed its sixteenth year of operations, the governmental funds (as presented in the balance sheet on page 30) reported a total fund balance of \$16.19 million. The fund balance categories, are fully described in the Notes to the Financial Statements on page 42.

- ◆ **Fund balance** increased a total of \$2,091,254 from the prior year. The primary reason for this increase stemmed from additional appropriations for programs predominantly in family strengthening, youth development, special needs programs and out-of-school-time goal areas; wherein many of these programs did not fully utilize their contracts which in turn increased fund balance. Additionally, fund balance included \$187,407 of Non-Spendable funds for prepaid items in fiscal year 2017.

CHILDREN'S SERVICES COUNCIL OF BROWARD COUNTY

Management's Discussion and Analysis Fiscal Year Ended September 30, 2017

Given this era of ongoing needs within the community and the limitations on raising property taxes, the Council assigned a portion of fund balance in order to expand services for children and their families. Accordingly, \$3,200,000 is assigned for subsequent year's budget for fiscal year 2017-18. Additionally, \$2,270,758 of fund balance is assigned for various purchases in next fiscal year. Within Unassigned Fund Balance, the Council voted to maintain a minimum balance of 8%-10% of budgeted operating expenditures or \$7.9 million to manage cash inflows and outflows until tax revenue is received since the Council is prohibited of issuing short-term debt instruments such as RAN (Revenue Anticipation Notes) or TAN (Tax Anticipation Notes). This minimum amount is based on best practices as outlined by the Government Finance Officers Association (GFOA). This leaves a remaining Unassigned Fund Balance of \$2,572,334.

- ◆ **Budget amendments** are prepared over the course of the year allocating appropriations from one line item to another to prevent budget overruns. Actual charges (expenditures) to appropriations (budget) were \$7 million below the final budget amounts.
- ◆ **Budget variances** - The most significant positive variance (\$5.4 million) occurred in Program Services reflected in the Council's General Fund Schedule of Revenues, Expenditures, and Changes in Fund Balance – Budget to Actual found on pages 76-79. This variance is due to several factors related to programs and services. To illustrate:
 - For most contracts, the Council requires that service provider's invoice be based on "units of service", not reimbursement of expenses. Consequently, if a provider does not provide all of the services that were anticipated, the contract is under-utilized. This method of invoicing allows the Council to only pay for services actually provided. The Council monitors utilization throughout the year and continues to work closely with those providers to help them provide the services and, therefore, utilize the available funds. The total budget variance affected by unallocated and under-utilization of the contracts is 7.6% or \$5,396,784.
 - The budget for Fiscal Year 2017 included \$177,863 that was not allocated to any specific program but may be appropriated in the subsequent fiscal year. Because various local economic conditions may arise at any time, the Council purposefully left these funds unallocated to have flexibility in meeting unexpected needs of the community.

CHILDREN'S SERVICES COUNCIL OF BROWARD COUNTY

Management's Discussion and Analysis Fiscal Year Ended September 30, 2017

- The budget variance for Program Support was \$486,369 and was primarily salary/benefit lapse, which is the direct result of administrative efficiencies and scrupulous accountability. General Administration budget variances totaled \$655,006,000 and was caused from salary/benefit lapse, software maintenance and facilities management; further demonstrating fiscal judiciousness throughout the Organization. Additionally, there were \$237,767 budget variances related to Capital Outlay mostly due to computer hardware and software purchases not being finalized by fiscal year-end.

Alternatively, resources available for appropriation (revenues) were \$595,563 over the final budgeted amount. This positive variance is primarily the result of higher than anticipated ad valorem tax revenue and interest earnings.

OTHER ASSETS and OTHER OBLIGATIONS

At the end of Fiscal Year 2017 the Council had \$7.28 million invested in capital assets including land, building and related infrastructure, as well as computer hardware and software. More detailed information about the Council's policies concerning capital assets is presented in Notes 1 and 6 of the Notes to the Financial Statements.

As presented in Note 9 of the Notes to the Financial Statements, the Council purchases commercial insurance for property and casualty claims. Other obligations include accrued vacation pay and sick leave, proportionate share of pension costs and the net OPEB liability. More detailed information about the Council's long-term liabilities is presented in Notes 7, 8 and 11 of the Notes to the Financial Statements.

ECONOMIC FACTORS, NEXT YEAR'S BUDGET and TAX RATES

The Council Members considered many factors when setting the subsequent fiscal-year's budget and tax rates during their May 2017 Budget Retreat. Council Members are always very cautious in setting the tax rate, weighing their desire to meet the expanding need for services against property values and voter concern about property tax rates. The Council is also mindful of the present fund balance, the .5 mill maximum tax levy and pressures within the local economy.

CHILDREN'S SERVICES COUNCIL OF BROWARD COUNTY

Management's Discussion and Analysis Fiscal Year Ended September 30, 2017

Broward County is the second most populous county in the state and comprises 31 different municipalities within an urban/suburban setting. A snapshot of the local economy presents a complex mix of economic indicators. While the local economy has improved in some sectors and unemployment has reached new lows, many families continue to exist in a state of persistent financial insecurity and are one financial emergency away from poverty, cited a recent study conducted by the Corporation for Enterprise Development. This was evidenced by Hurricane Irma which indirectly impacted Broward County in September 2017 and caused many families to lose their homes, needing FEMA and other local aid for temporary housing. Broward continues to have a high percentage of households that are considered "cost-burdened" (paying in excess of 30% of their incomes on housing costs) due to the high cost of living, low paying jobs, income stagnation, etc.

Property values continue to trend upwards for the past five years, with a significant 8% countywide increase last year. Additionally, from 2016 to 2017, Broward County experienced a steep 43% decline in foreclosure activity; a welcoming trend since foreclosures in this area led the nation for several years. While this is good news for some homeowners, many other groups are feeling pressure as rents have increased an average 2.9% from just a year ago. Cost-burdened renter households in Broward County is 57.8%, a decrease of 1.5% from the prior year.

The local inflation rate is beginning to trend upward within the greater Fort Lauderdale/Miami region from 1.9% in the prior year to 2.7% in 2017. Inflation tends to run higher in this region due to the high cost of living. As noted above, low wages, high housing costs coupled with expensive property insurance because of the vulnerability of hurricanes, contribute to this higher local consumer price index than the national average.

Unemployment in Broward County as of September 2017 continues its downward trend falling from 4.6% to 3.3%. The local unemployment data is slightly lower than the State's unemployment rate of 3.7% and much lower than national rate of 4.1%. The slight dip in the Broward County unemployment rate is part of the ebb and flow at that specific time period and has remained steady throughout the year.

CHILDREN'S SERVICES COUNCIL OF BROWARD COUNTY

Management's Discussion and Analysis Fiscal Year Ended September 30, 2017

At present, Council goals and objectives are shaped using the County-wide Children's Strategic Plan, input from the community and staff. The budget is then developed around those identified service and system needs. For the upcoming 2017-2018 fiscal year, local property values had a substantial 8.8% increase which allowed the Council Members to maintain the millage rate at 0.4882 mills but generated an additional \$6.8 million of tax revenue. Additionally, the Council members voted to appropriate \$3 million of fund balance, coupled with \$2.3 million of budget carry forward. With these additional resources, the Council was able to grow many of the programs and services to help meet the ever-growing needs within the community.

REQUESTS FOR INFORMATION

This financial report has been designed to provide Broward County's citizens, taxpayers and providers with a general overview of CSC's finances and to show CSC's accountability for the money it receives. If you have questions about this report or need additional financial information, contact the Chief Operating Officer at 6600 W Commercial Blvd., Lauderdale, Florida 33319 or visit the Council's website at: www.cscbroward.org.



CHILDREN'S SERVICES COUNCIL OF BROWARD COUNTY
Statement of Net Position
September 30, 2017

	Governmental Activities
ASSETS	
Current Assets:	
Cash	\$ 4,756,596
Investments	19,786,028
Accounts and Interest Receivable	181,683
Due From Other Governments	578,288
Prepaid Items	187,407
Total Current Assets	25,490,002
Other Assets:	
Capital Assets, Not Being Depreciated:	
Land	2,500,000
Intangibles - Work In Progress	63,247
Capital Assets, Net of Accumulated Depreciation:	
Building and Related Infrastructure	4,563,249
Computer Hardware/Software	51,807
Furniture and Equipment	106,410
Total Capital Assets	7,284,713
Total Assets	32,774,715
DEFERRED OUTFLOWS OF RESOURCES	
Pension Plans:	
Florida Retirement System	2,207,074
Health Insurance Subsidy	494,526
Total Deferred Outflows of Resources	2,701,600

Notes to the Financial Statements are an integral part of this statement

CHILDREN'S SERVICES COUNCIL OF BROWARD COUNTY

Statement of Net Position, (Continued)

September 30, 2017

LIABILITIES

Current Liabilities:

Accounts Payable and Accrued Liabilities	9,297,898
Due To Other Governments	
Unearned Revenue	630
Expected to be paid within one year:	
Compensated Absences	78,750
Total Current Liabilities	<u>9,377,278</u>

Noncurrent Liabilities:

Expected to be paid after one year:

Compensated Absences	708,751
Net OPEB Liability	98,400
Net Pension Liability:	
Florida Retirement System	3,865,205
Health Insurance Subsidy	1,647,434
Total Noncurrent Liabilities	<u>6,319,790</u>
Total Liabilities	<u>15,697,068</u>

DEFERRED INFLOWS OF RESOURCES

Pension Plans:

Florida Retirement System	121,934
Health Insurance Subsidy	145,886
Other Post Employment Benefits (OPEB)	95,993
Total Deferred Inflows of Resources	<u>363,813</u>

NET POSITION

Investment in Capital Assets	7,284,713
Unrestricted	12,130,721
Total Net Position	<u>\$ 19,415,434</u>

Notes to the Financial Statements are an integral part of this statement



CHILDREN'S SERVICES COUNCIL OF BROWARD COUNTY
Statement of Activities
Fiscal Year Ended September 30, 2017

	Governmental Activities
Expenses:	
Program Services:	
Program Services	\$ 65,126,956
Program Support	6,460,890
Total Program Services	71,587,846
General Administration:	
Personal Services	2,341,237
Materials and Services	928,985
Community Redevelopment and Tax Collector Fees	2,782,040
Total General Administration	6,052,262
Total Expenses	77,640,108
Program Revenue:	
Grant Funding, Restricted	1,209,290
Net Program Expense	76,430,818
General Revenues:	
Property Taxes	75,990,468
Investment Earnings	419,042
Grant Funding, Unrestricted	189,655
Miscellaneous Local	1,199,909
Total General Revenues	77,799,074
Change in Net Position	1,368,256
Net Position - Beginning restated for GASB No. 75 (see note 1G)	18,047,178
Net Position - End of the Year	\$ 19,415,434

Notes to the Financial Statements are an integral part of this statement

CHILDREN'S SERVICES COUNCIL OF BROWARD COUNTY
Balance Sheet - Governmental Funds
September 30, 2017

	General Fund	Special Revenue Fund	Total Governmental Funds
ASSETS			
Current Assets:			
Cash	\$ 4,719,725	\$ 36,871	\$ 4,756,596
Investments	19,786,028	-	19,786,028
Accounts and Interest Receivable	181,683	-	181,683
Due From Other Governments	141,350	436,938	578,288
Due From Other Fund	300,000	-	300,000
Prepaid Items	187,407	-	187,407
Total Assets	<u>\$ 25,316,193</u>	<u>\$ 473,809</u>	<u>\$ 25,790,002</u>
 LIABILITIES and FUND BALANCE			
Liabilities:			
Accounts Payable and Accrued Liabilities	\$ 9,124,089	\$ 173,809	\$ 9,297,898
Unearned Revenue	630	-	630
Due to Other Fund	-	300,000	300,000
Total Liabilities	<u>9,124,719</u>	<u>473,809</u>	<u>9,598,528</u>
 Fund Balance:			
Nonspendable	187,407	-	187,407
Assigned	5,470,758	-	5,470,758
Unassigned	10,533,309	-	10,533,309
Total Fund Balance	<u>16,191,474</u>	<u>-</u>	<u>16,191,474</u>
Total Liabilities and Fund Balance	<u>\$ 25,316,193</u>	<u>\$ 473,809</u>	<u>\$ 25,790,002</u>

Notes to the Financial Statements are an integral part of this statement

CHILDREN'S SERVICES COUNCIL OF BROWARD COUNTY
Reconciliation of the Governmental Funds Balance Sheet to
The Government-Wide Statement of Net Position
September 30, 2017

Fund Balance - Total Governmental Funds (page 30) \$ 16,191,474

Amounts reported for governmental activities in the government -wide Statement of Net Position are different because:

Capital assets used in governmental activities are not financial resources and therefore are not reported in the governmental funds.

Governmental capital assets	\$ 9,910,208	
Less accumulated depreciation	<u>(2,625,495)</u>	7,284,713

Deferred outflows of resources related to Pensions are recorded in the Statement of Net Position	2,701,600
--	-----------

Deferred inflows of resources related to Pensions and OPEB are recorded in the Statement of Net Position	(363,813)
--	-----------

Long-term liabilities are not due and payable in the current period and therefore are not reported in the governmental funds.

Compensated Absences	(787,501)
Net OPEB Liability	(98,400)
Net Pension Liability	<u>(5,512,639)</u>

Net Position of Governmental Activities (page 27)	<u><u>\$ 19,415,434</u></u>
---	-----------------------------

Notes to the Financial Statements are an integral part of this statement

CHILDREN'S SERVICES COUNCIL OF BROWARD COUNTY
Statement of Revenues, Expenditures and
Changes In Fund Balance - Governmental Funds
Fiscal Year Ended September 30, 2017

	<u>General Fund</u>	<u>Special Revenue Fund</u>	<u>Total Governmental Funds</u>
Revenues:			
Ad Valorem Taxes	\$ 75,990,468	\$ -	\$ 75,990,468
Grant Funding	189,655	1,209,290	1,398,945
Investment Earnings	419,042	-	419,042
Miscellaneous Local	1,199,909	-	1,199,909
Total Revenues	<u>77,799,074</u>	<u>1,209,290</u>	<u>79,008,364</u>
Expenditures:			
Program Services & Support:			
Program Services	65,066,661	1,052,391	66,119,052
Monitoring/Outcome Materials	60,295	-	60,295
Employee Salaries and Benefits	4,833,986	125,856	4,959,842
Other Consultants	2,902	3,400	6,302
Material and Supplies	2,489	-	2,489
Printing and Advertising	4,578	-	4,578
Software Maintenance	17,054	25,000	42,054
Travel and Other Expenditures	74,527	2,643	77,170
Total Program Services & Support	<u>70,062,492</u>	<u>1,209,290</u>	<u>71,271,782</u>
General Administration:			
Employee Salaries and Benefits	2,063,810	-	2,063,810
Legal Fees	32,745	-	32,745
Auditors and Other Consultants	42,605	-	42,605
Materials and Supplies	22,922	-	22,922
Printing and Advertising	6,252	-	6,252
Other General Administration	343,668	-	343,668
Telecommunications	39,502	-	39,502
Travel and Other Expenditures	92,923	-	92,923
Tax Collection Fees	475,628	-	475,628
Community Redevelopment Area Fees	2,306,412	-	2,306,412
Total General Administration	<u>5,426,467</u>	<u>-</u>	<u>5,426,467</u>

Notes to the Financial Statements are an integral part of this statement

CHILDREN'S SERVICES COUNCIL OF BROWARD COUNTY
Statement of Revenues, Expenditures and
Changes In Fund Balance - Governmental Funds
Fiscal Year Ended September 30, 2017, (Continued)

	<u>General Fund</u>	<u>Special Revenue Fund</u>	<u>Total Governmental Funds</u>
Capital Outlay:			
Computer Hardware/Software	74,111	-	74,111
Furniture/ Equipment	144,750	-	144,750
Total Capital Outlay	<u>218,861</u>	<u>-</u>	<u>218,861</u>
Total Expenditures	<u>75,707,820</u>	<u>1,209,290</u>	<u>76,917,110</u>
Net Change in Fund Balance	2,091,254	-	2,091,254
Beginning Fund Balance	<u>14,100,220</u>	<u>-</u>	<u>14,100,220</u>
Ending Fund Balance	<u><u>\$ 16,191,474</u></u>	<u><u>\$ -</u></u>	<u><u>\$ 16,191,474</u></u>

Notes to the Financial Statements are an integral part of this statement

CHILDREN'S SERVICES COUNCIL OF BROWARD COUNTY
Reconciliation of the Statement of Revenues,
Expenditures and Changes in Fund Balance
of Governmental Funds to the
Statement of Activities
Fiscal Year Ended September 30, 2017

Net Change in Fund Balance	
Total Governmental Funds (page 33)	\$ 2,091,254

Amounts reported for governmental activities in the government-wide Statement of Activities are different because:

Governmental Funds report capital outlays as expenditures. However, in the Statement of Activities, the cost of those assets is depreciated over their estimated useful lives. This is the amount by which depreciation expense exceeded capital outlay.

Expenditures for capital assets	\$ 211,445	
Less current year depreciation	(346,838)	(135,393)

Some expenses reported in the Statement of Activities do not require the use of current financial resources and therefore are not reported as expenditures in the Governmental Funds.

Change in Compensated Absences	(51,897)
Change in Net OPEB Liability	(13,047)
Change in Net Pension Liability	(522,661)
Change in Net Position of Governmental Activities (page 29)	\$ 1,368,256

Notes to the Financial Statements are an integral part of this statement

CHILDREN'S SERVICES COUNCIL OF BROWARD COUNTY

Notes to the Financial Statements

September 30, 2017

The Children's Services Council of Broward County ("Council") is a special independent taxing district with a mission to provide leadership, advocacy and resources necessary to enhance children's lives and empower them to become responsible, productive adults through collaborative planning of a continuum of quality care. That mission provides the framework through which the Council's vision will be achieved: "That all children in Broward County will have the opportunity to realize their full potential, their hopes and dreams, supported by a nurturing family and community".

1. SUMMARY OF SIGNIFICANT ACCOUNTING POLICIES

The accompanying financial statements conform to United States Generally Accepted Accounting Principles ("GAAP") for governmental units as prescribed by the Governmental Accounting Standards Board ("GASB") and other recognized authoritative sources. GASB is the accepted standard-setting body for governmental accounting and financial reporting. The more significant accounting policies are summarized in the following paragraphs.

A. Reporting Entity

The Children's Services Council of Broward County ("Council") is a special independent taxing district authorized under Florida Law, Chapter 2000-461, as amended. The law became effective January 2, 2001 and was reaffirmed by an overwhelmingly positive vote for reauthorization on November 4, 2014. The eleven member governing board is comprised of five (5) individuals recommended by the Broward County Board of County Commissioners and appointed by the Governor and six (6) members appointed by virtue of the office or position they hold within the community. The five members appointed by the governor serve for a four-year term. The Council Members bring to the Council an understanding of policies and programs affecting children, an understanding of the diverse and multi-cultural needs of the Broward community and a firm commitment to improving the welfare of children and their families. The Council is contiguous with Broward County.

The Children's Services Council of Broward County follows the standards and related amendments promulgated by GASB to define the reporting entity. The financial statements include all operations over which the Council is financially accountable.

CHILDREN'S SERVICES COUNCIL OF BROWARD COUNTY

Notes to the Financial Statements

September 30, 2017

A. Reporting Entity, (Continued)

While the Council provides funding for various agencies, each agency is financially independent. The Council has no authority to appoint or hire management of the agencies nor does it have responsibility for routine operations of the agencies. Based upon application of these factors, the Council has concluded that it has no financial accountability for the various agencies and therefore, their financial statements are excluded from the reporting entity. The Council has not identified any component units and is not a participant in any joint ventures.

B. Basis of Presentation

Government-wide Financial Statements - The government-wide financial statements include the statement of net position and the statement of activities and report information on all of the activities of the Council as a whole. These governmental activities are normally supported by taxes and intergovernmental revenues with any interfund activity removed from these statements.

The statement of activities demonstrates the degree to which the direct expenses of a given function are offset by program revenues. *Direct expenses* are those that are clearly identifiable with a specific function or segment. *Program revenues* include 1) charges to customers or applicants who purchase, use, or directly benefit from goods, services, or privileges provided by a given function and 2) grants and contributions that are restricted to meeting the operational or capital requirements of a particular function. Taxes and other items not properly included among program revenues are reported instead as *general revenues*.

Fund Financial Statements - Separate financial statements are provided for the governmental funds. Governmental fund reporting focuses on the sources, uses and balances of current financial resources. Major individual governmental funds are reported as separate columns in the fund financial statements. The Council uses the following funds:

- *General Fund* is the Council's primary operating fund and accounts for all financial resources not accounted for in another fund.
- *Special Revenue Fund* accounts for the proceeds of specific revenue sources that are restricted, committed or assigned to expenditures for specified purposes. This includes the federal grants from the Department of Education-Twenty-First Century Community Learning Centers ("21st CCLC") and the Performance Partnership Pilot ("P3").

CHILDREN'S SERVICES COUNCIL OF BROWARD COUNTY

Notes to the Financial Statements

September 30, 2017

C. Measurement Focus and Basis of Accounting

The accounting and financial reporting treatment is determined by the applicable measurement focus and basis of accounting. Measurement focus indicates the type of resources being measured such as *current financial resources* or *economic resources*. The basis of accounting indicates the timing of transactions or events for recognition in the financial statements.

Government-wide Financial Statements - The government-wide financial statements are reported using the economic resources measurement focus and the accrual basis of accounting. Revenues are recorded when earned and expenses are recorded when a liability is incurred, regardless of the timing of related cash flows. Property taxes are recognized as revenues in the year in which they are levied. Grants and similar items are recognized as revenue as soon as all eligibility requirements imposed by the provider have been met. All assets and deferred outflows of resources and all liabilities and deferred inflows of resources associated with the activities of the Council are included on the Statement of Net Position. The Statement of Activities reports revenues and expenses.

Fund Financial Statements - Governmental fund financial statements are reported using the current financial resources measurement focus and the modified accrual basis of accounting. Revenues are recognized as soon as they are both measurable and available. Revenues are considered available when they are collectible within the current period or soon enough thereafter to pay liabilities of the current period. For this purpose, the Council considers revenues available if they are collected within sixty days of the end of the current fiscal year.

Property taxes and interest on investments are susceptible to accrual. Property taxes are recorded as revenues in the fiscal year in which they are levied, provided they are collected in the current period or within sixty days thereafter. Interest on invested funds is recognized when earned. Thus, accrued property tax and interest have been recognized as revenues of the current fiscal period. All other revenue items are considered to be measured and available when earned.

Expenditures generally are recorded when a liability is incurred, as under accrual accounting. However, expenditures related to compensated absences, pensions and the net OPEB obligations are recorded only when a payment is due.

CHILDREN'S SERVICES COUNCIL OF BROWARD COUNTY

Notes to the Financial Statements

September 30, 2017

C. Measurement Focus and Basis of Accounting, (Continued)

Unearned Revenue – Unearned revenue arises when assets are recognized before revenue recognition criteria have been satisfied. On both the government-wide and the governmental fund financial statements, revenues are recognized when all eligibility requirements are met.

D. Budgets and Budgetary Accounting

Budgets are adopted on a basis consistent with United States GAAP. The reported budgetary data represents the original and the final amended budgets as approved by the Council Members. Budgets are adopted for all funds and transfers of appropriations between functions require Council approval. The level of control at which expenditures may not legally exceed the budget is at the function level.

Appropriations in all budgeted funds lapse at the end of the fiscal year even if they have related encumbrances. Encumbrances are commitments related to unperformed (executory) contracts for goods or services (i.e., purchase orders, contracts, and commitments). Encumbrance accounting is utilized as an extension of the formal budgetary process to reflect the estimated amount of future expenditures arising from the issuance of purchase orders, contracts or other forms of legal commitments existing at year-end, which will be paid in the future. Encumbrances lapse at year-end; however, the succeeding year's budget provides for the re-appropriation of certain year-end encumbrances. These "open" encumbrances are included in the Assigned Fund Balance at fiscal year-end in accordance with their spending constraint. Encumbrances do not constitute expenditures or liabilities since goods and services are not yet received.

E. Assets, Liabilities, Deferred Outflows/Inflows of Resources and Fund Balance/Net Position

1. Cash and Investments - The Council utilizes pooled cash accounting whereby excess monies are aggregated for investment purposes. Florida Statutes authorize a variety of investment mechanisms and the Council follows this best practice by diversifying its investments between the Local Government Surplus Funds Trust Fund and Wells Fargo Advantage Funds.

CHILDREN'S SERVICES COUNCIL OF BROWARD COUNTY

Notes to the Financial Statements

September 30, 2017

E. Assets, Liabilities, Deferred Outflows/Inflows of Resources and Fund Balance/Net Position, (Continued)

The Local Government Surplus Funds Trust Fund is a state pool managed by the Florida State Board of Administration ("SBA"), which provides regulatory oversight. In order to accommodate pool participants with readily available cash, a substantial portion of the portfolio is placed in short-term securities ("Florida PRIME").

The Local Government Surplus Funds Trust Fund is governed by the rules of Chapter 19-7 of the Florida Administration code. These rules provide guidance and establish the general operating procedures for the administration of the Local Government Surplus Funds Trust Fund. Additionally, the Office of the Auditor General performs the operational audit of the activities and investments of the SBA.

According to the SBA, the pool follows GASB Statement No. 31 and GASB No. 79 "*Certain External Investment Pools and Pool Participants*" where the Council owns a share of the respective pool, not the underlying securities. Accordingly, the Council's investment in the Florida PRIME are stated at amortized cost. Florida PRIME is exempt from the GASB No. 72 fair value hierarchy disclosures and reports at amortized cost. Additionally, the investments in the Florida PRIME are not insured by FDIC or any other governmental agency.

The Florida Education Investment Trust Fund (FEITF) is a common law trust organized under the laws of the State of Florida. The sponsors of the Fund are the Florida School Boards Association and the Florida Association of District School Superintendents. The Fund is designed to meet cash management and short term investment needs of school districts, political subdivisions of the State of Florida, or instrumentalities of political subdivisions of the State. FEITF is a local government investment pool (LGIP), which follows GASB Statement No. 79 criteria. The Council's funds invested in the FEITF are exempt from GASB Statement No. 72.

Wells Fargo Funds Management, LLC is a wholly owned subsidiary of Wells Fargo & Company, providing investment advisory and administrative services for *Wells Fargo Advantage Funds*. The two Council money market funds are: 1) Heritage Money Market Fund and 2) Municipal Cash Management Money Market Fund are included in this group. These funds are exempt from GASB No. 72.

CHILDREN'S SERVICES COUNCIL OF BROWARD COUNTY

Notes to the Financial Statements

September 30, 2017

E. Assets, Liabilities, Deferred Outflows/Inflows of Resources and Fund Balance/Net Position, (Continued)

Method Used to Value Investments - The Council reports investment at fair value. Fair value is the price that would be received to sell an asset or paid to transfer a liability in an orderly transaction between market participants at the measurement date. Net appreciation (depreciation) in fair value of investments includes realized and unrealized gains and losses. Realized gains and losses are determined on the basis of specific cost. Purchases and sales of investments are recorded on a trade date basis.

Fair Value Hierarchy - GASB No. 72 "*Fair Value Measurement and Application*" states that investments that meet specific criteria should be measured and reported at fair value and classified according to the following hierarchy:

Level 1 – Investments reflect unadjusted quoted prices in active markets for identical assets.

Level 2 – Investments reflect prices that are based on inputs that are either directly or indirectly observable for an asset (including quoted prices for similar assets), which may include inputs in markets that are not considered to be active.

Level 3 – Investments reflect prices based upon unobservable inputs for an asset.

Certain investments, such as money market funds, Florida PRIME and FEITF are not included in the fair value hierarchy as they are reported at amortized cost. Accordingly, the Council does not maintain any investments subject to fair value measurement as of September 30, 2017.

2. Inventory and Prepaid Items - The Council does not utilize any inventory items. Certain payments to vendors reflect costs applicable to future accounting periods and are recorded as prepaid items in government-wide and fund statements. The Council utilizes the consumption method to account for these costs.
3. Capital Assets - Capital assets, which include land, intangibles, building and related infrastructure, computer hardware/software, furniture, and equipment, are reported in the government-wide financial statements.

CHILDREN'S SERVICES COUNCIL OF BROWARD COUNTY

Notes to the Financial Statements

September 30, 2017

E. Assets, Liabilities, Deferred Outflows/Inflows of Resources and Fund Balance/Net Position, (Continued)

Items purchased or acquired are reported at historical cost or estimated historical cost. Donated assets are recorded at fair value (the price that would be paid to acquire an asset with equivalent level service potential in an orderly market transaction at the acquisition date (referred to as acquisition value)).

Maintenance, repairs and minor renovations are not capitalized. Expenditures that significantly increase values or extend useful lives are capitalized. Capital assets are depreciated using the straight-line method over the following estimated useful lives:

<u>Asset</u>	<u>Years</u>
Computer Hardware/Software	3
Intangible Assets (E-learning Courses)	3
Furniture and Equipment	5
Building Infrastructure	20
Building	30

Depreciation expense is reflected in the financial statements in accordance with GASB Statement No. 34 requirements for capital assets greater than \$5,000 and an estimated economic life greater than one year. Thus, program related expenditures include depreciation expense in Program Support. For the General Administration category, depreciation expense is included in Materials and Services. Per Florida State Statutes as well as for internal control purposes, assets with a historical cost greater than \$1,000 are tagged and tracked in the capital assets system.

4. Deferred outflows/inflows of resources – In addition to assets, the Statement of Financial Position will sometimes report a separate section for deferred outflows of resources. This separate financial statement element, *deferred outflows of resources*, represents a consumption of net position that applies to a future period(s) and so will not be recognized as an outflow of resources (expense/expenditure) until then.

In addition to liabilities, the Statement of Financial Position will sometimes report a separate section for deferred inflows of resources.

CHILDREN'S SERVICES COUNCIL OF BROWARD COUNTY

**Notes to the Financial Statements
September 30, 2017**

E. Assets, Liabilities, Deferred Outflows/Inflows of Resources and Fund Balance/Net Position, (Continued)

This separate financial statement element, *deferred inflows of resources*, represents an acquisition of net position that applies to a future period(s) and so will not be recognized as an inflow of resources (revenue) until that time.

In accordance with GASB Statements No. 68, No. 71, and No. 75, the related activity for deferred outflows of resources and deferred inflows of resources on its financial statements (see Notes 7 & 8 for additional information) for fiscal year ended September 30, 2017 is as follows:

	Deferred Outflows of Resources	Deferred Inflows of Resources
Pension Related-FRS (see footnote 7)	\$ 2,207,074	\$ 121,934
Pension Related-HIS (see footnote 7)	494,526	145,886
OPEB Related		95,993
Total	\$ 2,701,600	\$ 363,813

Summary of Pension and OPEB Expense

Pension Expense FRS (see footnote 7)	\$ 338,124
Pension Expense Investment (see footnote 7)	171,487
Pension Expense-HIS (see footnote 7)	5,708
OPEB Expense (see footnote 8)	13,047
Total	\$ 528,366

5. *Fund Balance/Net Position* – Fund Equity at the governmental fund reporting level is classified as *Fund Balance*. Fund equity for all other reporting is classified as *Net Position*.

CHILDREN'S SERVICES COUNCIL OF BROWARD COUNTY

Notes to the Financial Statements

September 30, 2017

E. Assets, Liabilities, Deferred Outflows/Inflows of Resources and Fund Balance/Net Position, (Continued)

Fund Balance and Flow Assumptions - Generally, Fund Balance represents the difference between the assets and deferred outflows of resources and liabilities and deferred inflows of resources. In the fund financial statements, governmental funds report fund classifications based on the nature and extent to which the Council is bound to have constraints on the specific purposes for which amounts in those funds can be spent.

The following classifications describe the relative strength of the spending constraints:

- *Nonspendable Fund Balance* – amounts that are not in spendable form (such as prepaid items) or are legally or contractually required to be maintained intact.
- *Restricted Fund Balance* – amounts constrained to specific purposes by external providers (such as grantors) or imposed by law through constitutional provisions, or by enabling legislation.
- *Committed Fund Balance* – amounts constrained to specific purposes by formal action of the Council itself, using its highest level of decision-making authority (i.e., the Council Members) through an Issue Paper. To be reported as committed, amounts cannot be used for any other purpose unless the Council Members take the same highest-level action (i.e., Issue Paper) to remove or change the constraint.
- *Assigned Fund Balance* – amounts the Council intends to use for a specific purpose but are neither restricted nor committed. Assignments can be made by the Executive Committee or by an official which the Council Members delegate the authority at their direction. Through the Issue Paper process, the Council approves assigned fund balance.
- *Unassigned Fund Balance* – amounts that have not been assigned to other funds and that have not been restricted, committed or assigned to specific purposes within the general fund. The General Fund is the only fund that reports a positive unassigned fund balance amount. In other governmental funds, if expenditures incurred for specific purposes exceed the amounts restricted, committed or assigned to those purposes, it may be necessary to report a negative unassigned fund balance.

CHILDREN'S SERVICES COUNCIL OF BROWARD COUNTY

Notes to the Financial Statements

September 30, 2017

E. Assets, Liabilities, Deferred Outflows/Inflows of Resources and Fund Balance/Net Position, (Continued)

When expenditures are incurred for purposes for which both restricted and unrestricted fund balance is available, the Council considers restricted funds to have been spent first. When expenditures are incurred for which committed, assigned or unassigned fund balances are available, the Council considers amounts to have been spent first out of committed funds, then assigned funds and finally unassigned funds, as needed, unless the Council Members or its delegated official or body has provided otherwise in its commitment or assignment actions.

Minimum Fund Balance Policy - In the General Fund, the Council strives to maintain a minimum unassigned fund balance of 8%-10% of the budgeted operating expenditures. This minimum amount is required to manage cash inflows and outflows until tax revenue is received since the Council is prohibited from issuing short-term debt instruments such as RAN (Revenue Anticipation Notes) or TAN (Tax Anticipation Notes).

This policy strives to maintain additional unassigned fund balance liquidity to mitigate current and future risks such as revenue shortfalls and unanticipated expenditures, maintain reserves due to the vulnerability of being located in a hurricane zone, and other unforeseen events. Additional amounts are to be determined each year by the Council during the budget process.

Net Position and Flow Assumptions – The Net Position represents the difference between assets and deferred outflows less liabilities and deferred inflows of resources. The Net Position of the government wide funds are categorized as investment in capital assets, reduced by accumulated depreciation and any the outstanding balances of any borrowing used (i.e., the amount that the Council has not spent) for the acquisition.

The net position is reported as restricted when there are limitations imposed on its use either through the enabling legislation or through external restrictions imposed by grantors or laws or regulations of other governments. The balance of net position is reported as unrestricted. In order to report an amount as Restricted Net Position – net position and an unrestricted – net position in the government-wide financial statements, the Council would first use restricted net position before using unrestricted net position.

CHILDREN'S SERVICES COUNCIL OF BROWARD COUNTY

Notes to the Financial Statements

September 30, 2017

F. Revenues and Expenditures/Expenses

1. *Program Revenues* - Amounts reported as miscellaneous local revenue include 1) local grants for various programs, 2) donations and contributions for particular events and 3) charges to customers for trainings. All taxes are reported as general revenues rather than program revenues.
2. *Property Taxes* - Florida laws restrict millage rate increases that a government may levy. In addition to multiple exemptions for most homeowners, a four percent discount is also allowed if the taxes are paid in November, with the discount declining by one percentage point each month thereafter. Taxes become delinquent April 1 of each year. Delinquent property tax certificates are sold to the public beginning June 1, at which time a lien attaches to the property. By fiscal year end, virtually all property taxes are collected either directly or through tax certificate sales. Property tax revenues are recorded by the Council based on the amount of receipts reported by the County Tax Collector.
3. *Use of Estimates* - The preparation of financial statements in conformity with U.S. generally accepted accounting principles requires management to make estimates and assumptions that affect the reported amounts of assets and deferred outflows and liabilities and deferred inflows, disclosure of contingent assets and deferred outflows of resources and liabilities and deferred inflows of resources at the date of the financial statements, and the reported amount of revenue and expenses/expenditures during the reporting period. Actual results may differ from those estimates.
4. *Compensated Absences* - The Council employees are granted a specific number of paid vacation and sick leave days. Employees are permitted to accumulate a maximum of 450 hours (60 days) of vacation as of September 30. Excess time is forfeited if not used by the end of the fiscal year.

Employees can accrue unlimited sick leave, but are only reimbursed for a percentage of unused sick leave upon retirement after at least 5 years of service. The costs of vacation and sick leave benefits (compensated absences) are budgeted and expended in the respective fund when payments are made to employees. In addition, the Council will record expenditures at employment termination in the applicable fiscal year at the fund level. The liability for all accrued vacation and vested sick leave benefits is recorded in the government-wide financial statements.

CHILDREN'S SERVICES COUNCIL OF BROWARD COUNTY

Notes to the Financial Statements September 30, 2017

G. Impact of Recently Issued Accounting Principles

In June 2015, the GASB issued Statement No. 75 *Accounting and Financial Reporting for Postemployment Benefit Other Than Pensions*. The primary objective is to improve accounting and financial reporting by state and local governments for postemployment benefits other than pensions (other postemployment benefits or OPEB). It also improves information provided by state and local governmental employers about financial support for OPEB that is provided by other entities. This Statement is effective for fiscal years beginning after June 15, 2017. GASB Statement 75 replaces GASB Statement 45.

The Council early implemented GASB 75 in this fiscal year. Implementation of this standard a year early, resulted in a cost savings, as the Council would have been required to complete a full GASB 45 valuation for 2016-17, and then complete a full GASB 75 valuation for 2017-18. This would have forced the Council to pay actuarial fees for 2 full valuations in back-to-back years. The adoption of GASB 75 a year early, means that the Council would only need to have an interim GASB 75 valuation done for the fiscal year 2017-18, thereby reducing fees over the 2-year period.

Employees who retire from the Council and their dependents are eligible to continue to participate ("single employer plan") in the Council's health insurance, life insurance, and long-term care benefits currently offered through the Council at the "blended" employee group rate, which is determined annually by the Council. The retiree must continue to meet all participation requirements and pay all applicable premiums by the specified due date. Life insurance and long-term care benefits are portable and the retiree must pay premiums to the carrier directly. (See Note 8 for more details). The effect of the accounting change on net position as previously reported for fiscal year 2016 and prior years is an increase of \$99,137 and is adjusted as of September 30, 2016 as follows:

	Governmental Activities	
Net Position, previously reported		\$ 17,948,041
Adjustment for OPEB	\$ 99,137	
Total OPEB related adjustment		99,137
Net Position, restated		<u>\$ 18,047,178</u>

CHILDREN'S SERVICES COUNCIL OF BROWARD COUNTY

Notes to the Financial Statements

September 30, 2017

H. New Accounting Pronouncements

GASB Statement No. 80- In January 2016, the GASB issued Statement No. 80 *Blending Requirements for Certain Component Units – An amendment of GASB Statement No. 14*. The objective of this Statement is to improve financial reporting by clarifying the financial statement presentation requirements for certain component units. It amends the blending requirements for the financial statement presentation of component units of all state and local governments. The additional criterion requires blending of a component unit incorporated as a not-for-profit corporation in which the primary government is the sole corporate member. The additional criterion does not apply to component units included in the financial reporting entity pursuant to the provisions of Statement No. 39, *Determining Whether Certain Organizations Are Component Units*. The requirements of this Statement are effective for reporting periods beginning after June 15, 2016. Earlier application is encouraged. There is no impact to the Council.

GASB Statement No. 81- In March 2016, the GASB issued Statement No. 81 *Irrevocable Split-Interest Agreements*. The objective is to improve accounting and financial reporting for irrevocable split-interest agreements by providing recognition and measurement guidance in which a government is a beneficiary of the agreement. Split-interest agreements are a type of giving agreement used by donors to provide resources to two or more beneficiaries, including governments. This Statement requires that a government that receives resources pursuant to an irrevocable split-interest agreement recognize assets, liabilities, and deferred inflows of resources at the inception of the agreement. Furthermore, it requires that a government recognize assets representing its beneficial interests in irrevocable split-interest agreements that are administered by a third party, if the government controls the present service capacity of the beneficial interests. This Statement requires that a government recognize revenue when the resources become applicable to the reporting period. The requirements of this Statement are effective for financial statements for periods beginning after December 15, 2016, and should be applied retroactively. Earlier application is encouraged. There is no impact to the Council.

GASB Statement No. 82- In March 2016, the GASB issued Statement No. 82 *Pension Issues-An amendment of GASB Statements No. 67, No. 68, and No. 73*. The objective of this Statement is to address certain issues that have been raised with respect to Statements No. 67, No. 68, and No. 73.

CHILDREN'S SERVICES COUNCIL OF BROWARD COUNTY

Notes to the Financial Statements

September 30, 2017

H. New Accounting Pronouncements, (Continued)

Specifically, this Statement addresses issues regarding (1) the presentation of payroll-related measures in required supplementary information, (2) the selection of assumptions and the treatment of deviations from the guidance in an Actuarial Standard of Practice for financial reporting purposes, and (3) the classification of payments made by employers to satisfy employee (plan member) contribution requirements.

The requirements of this Statement are effective for reporting periods beginning after June 15, 2016, except for the requirements of this Statement for the selection of assumptions in a circumstance in which an employer's pension liability is measured as of a date other than the employer's most recent fiscal year-end. In that circumstance, the requirements for the selection of assumptions are effective for that employer in the first reporting period in which the measurement date of the pension liability is on or after June 15, 2017. Earlier application is encouraged. The Council is currently evaluating the implementation requirements of this Statement.

GASB Statement No. 83- In November 2016, the GASB issued Statement No. 83 *Certain Asset Retirement Obligation*. This Statement addresses accounting and financial reporting for certain asset retirement obligations (AROs). An ARO is a legally enforceable liability associated with the retirement of a tangible capital asset. A government that has legal obligations to perform future asset retirement activities related to its tangible capital assets should recognize a liability based on the guidance in this Statement. The requirements of this Statement are effective for reporting periods beginning after June 15, 2018. Earlier application is encouraged. The Council is currently evaluating the implementation requirements of this Statement.

GASB Statement No. 84- In January 2017, the GASB issued Statement No. 84 *Fiduciary Activities*. The objective of this Statement is to improve guidance regarding the identification of fiduciary activities for accounting and financial reporting purposes and how those activities should be reported. This Statement establishes criteria for identifying fiduciary activities of all state and local governments. The focus of the criteria generally is on (1) whether a government is controlling the assets of the fiduciary activity and (2) the beneficiaries with whom a fiduciary

CHILDREN'S SERVICES COUNCIL OF BROWARD COUNTY

Notes to the Financial Statements

September 30, 2017

H. New Accounting Pronouncements, (Continued)

relationship exists. Separate criteria are included to identify fiduciary component units and postemployment benefit arrangements that are fiduciary activities. The requirements of this Statement are effective for reporting periods beginning after December 15, 2018. Earlier application is encouraged. The Council is currently evaluating the implementation requirements of this Statement.

GASB Statement No. 85- In March 2017, the GASB issued Statement No. 85, *Omnibus 2017*. The objective of this Statement is to address practice issues that have been identified during implementation and application of certain GASB Statements. This Statement addresses a variety of topics including issues related to blending component units, goodwill, fair value measurement and application, and postemployment benefits (pensions and other postemployment benefits [OPEB]). The provisions of this Statement are effective for periods beginning after June 15, 2017. Earlier application is encouraged. The Council is currently evaluating the implementation requirements of this Statement.

GASB Statement No. 86- In May 2017, the GASB issued Statement No. 86, *Certain Debt Extinguishment Issues*. The primary objective of this Statement is to improve consistency in accounting and financial reporting for in-substance defeasance of debt by providing guidance for transactions in which cash and other monetary assets acquired with only existing resources—resources other than the proceeds of refunding debt—are placed in an irrevocable trust for the sole purpose of extinguishing debt. This Statement also improves accounting and financial reporting for prepaid insurance on debt that is extinguished and notes to financial statements for debt that is defeased in substance. The requirements of this Statement are effective for reporting periods beginning after June 15, 2017. Earlier application is encouraged. There is no impact to the Council.

GASB Statement No.87- In June 2017 the GASB issued Statement No. 87, *Leases*. The objective of this Statement is to better meet the information needs of financial statement users by improving accounting and financial reporting for leases by governments. This Statement increases the usefulness of governments' financial statements by requiring recognition of certain lease assets and liabilities for leases that previously were classified as operating leases and recognized as inflows of resources or outflows of resources based on the payment provisions of the contract.

CHILDREN'S SERVICES COUNCIL OF BROWARD COUNTY

Notes to the Financial Statements

September 30, 2017

H. New Accounting Pronouncements, (Continued)

It establishes a single model for lease accounting based on the foundational principle that leases are financings of the right to use an underlying asset. Under this Statement, a lessee is required to recognize a lease liability and an intangible right-to-use lease asset, and a lessor is required to recognize a lease receivable and a deferred inflow of resources, thereby enhancing the relevance and consistency of information about governments' leasing activities. The requirements of this statement are effective for reporting periods beginning after December 15, 2019. The Council is currently evaluating the implementation requirements of this Statement.

2. CASH AND INVESTMENTS

Statement of Policy

The purpose of the Council's investment policy is to set forth the investment objectives and parameters for the management of public funds. The policy is designed to ensure prudent management of public funds, the availability of operating funds when needed, and an investment return competitive with market rates.

The Council's policy is written in accordance with Section 218.415, Florida Statutes, which applies to funds under control of local governments and special districts. The policy and any subsequent revisions are approved by the Council Members.

Cash

Florida statutes authorize the deposit of the Council funds in demand deposits or time deposits of financial institutions approved by the State Treasurer, defined as qualified public depositories. Pursuant to Chapter 280, Florida Statutes, the State Treasurer requires Qualified Public Depositories ("QPD") to deposit with the Treasurer or other banking institution, eligible collateral. In the event of a failure, the remaining public depositories would be responsible for covering any losses. All bank balances of the Council are held in a QPD. As of September 30, 2017, the carrying amount of the Council's deposits was \$4,756,596 with a bank balance of \$4,812,311. The Council's deposits at year-end are considered insured and collateralized for custodial credit risk purposes.

CHILDREN'S SERVICES COUNCIL OF BROWARD COUNTY

Notes to the Financial Statements September 30, 2017

2. CASH AND INVESTMENTS (Continued)

Investments

The Council's investment policy allows management to invest funds in investments permitted under Florida Statutes Section 218.415. This statute explicitly allows deposits and investments in QPD's, the SBA, and money market funds, which are the only vehicles the Council is currently utilizing.

Cash and investments as of September 30, 2017 are composed of the following:

	Reported Amount	Weighted Average Maturity	Fair Value
Cash Deposits	<u>\$ 4,756,596</u>	-	<u>\$ 4,756,596</u>
Investments with the SBA:			
Florida PRIME	9,192,392	51 days	9,192,392
Investments with the FEITF:			-
FEITF	10,061,362	52 days	10,061,362
Wells Fargo Investments:			-
Heritage Money Market Fund	<u>532,274</u>	21 days	<u>532,274</u>
Total Investments	<u>19,786,028</u>		<u>19,786,028</u>
Total Cash and Investments	<u>\$ 24,542,624</u>		<u>\$ 24,542,624</u>

Credit Risk

Credit risk is the risk that an issuer or other counter party to an investment will not fulfill its obligations. The Council's investment policy limits its investments to high quality investments to control credit risk. For liquidity purposes as well as to control risk, all of the Council's operating investments for fiscal year 2017, were invested with the SBA, the Florida Education Investment Trust Fund (FEITF) and Wells Fargo Advantage Funds. The SBA Florida PRIME investment pool, the FEITF and the Heritage Money Market Fund held by Wells Fargo Advantage Funds are all AAAM rated by Standard and Poors. This rating is the highest creditworthiness rate given by the national agency.

Interest Rate Risk

Interest rate risk is the risk that changes in interest rates will adversely affect the fair value of an investment. The Council's investment policy limits investment maturities as a means of managing exposure to fair value losses arising from increasing interest rates. The dollar weighted average days to maturity (WAM) for the Florida PRIME at September 30, 2017 is 51 days.

CHILDREN'S SERVICES COUNCIL OF BROWARD COUNTY

Notes to the Financial Statements

September 30, 2017

2. CASH AND INVESTMENTS (Continued)

Next interest rate reset dates for floating rate securities are used in the calculation of the WAM. The weighted average life of Florida PRIME at September 30, 2017 is 80 days. The Council currently does not have significant investment balances with long-term maturities that may be subject to significant fair value losses arising from increasing interest rates.

Investment Pools and Pool Participants

With regard to redemption dates, Chapter 218.409(8) (a), Florida Statutes, states, "The principal, and any part thereof, of each account constituting the trust fund is subject to payment at any time from the moneys in the trust fund. However, the Executive Director may, in good faith, on the occurrence of an event that has a material impact on liquidity or operations of the trust fund, for 48 hours limit contributions to or withdrawals from the trust fund to ensure that the Board can invest moneys entrusted to it in exercising its fiduciary responsibility. Such action must be immediately disclosed to all participants, the Trustees, the Joint Legislative Auditing Committee, the Investment Advisory Council, and the Participant Local Government Advisory Council. The Trustees shall convene an emergency meeting as soon as practicable from the time the Executive Director has instituted such measures and review the necessity of those measures. If the Trustees are unable to convene an emergency meeting before the expiration of the 48-hour moratorium on contributions and withdrawals, the Executive Director may extend the moratorium until the Trustees are able to meet to review the necessity for the moratorium. If the Trustees agree with such measures, the Trustees shall vote to continue the measures for up to an additional 15 days. The Trustees must convene and vote to continue any such measures before the expiration of the time limit set, but in no case may the time limit set by the Trustees exceed 15 days."

With regard to liquidity fees, Florida Statute 218.409(4) provides authority for the SBA to impose penalties for early withdrawal, subject to disclosure in the enrollment materials of the amount and purpose of such fees. At present, no such disclosure has been made.

As of September 30, 2017, there were no redemption fees or maximum transaction amounts, or any other requirements that serve to limit a participant's daily access to 100 percent of their account value.

CHILDREN'S SERVICES COUNCIL OF BROWARD COUNTY

**Notes to the Financial Statements
September 30, 2017**

3. RECEIVABLES AND PAYABLES

Accounts and Interest Receivable at September 30, 2017 consists of the following:

	<u>General Fund</u>
Back-to-School Project	\$ 50,850
Broward Reads Project	48,951
Undoing Racism Project	35,000
Taxes Receivable	11,923
Interest Receivable	3,270
Other	31,719
Total Accounts Receivable	<u>\$ 181,713</u>

Accounts Payable, Salaries and Wages Payable, and Accrued Liabilities as of September 30, 2017 consists of the following:

	<u>General Fund</u>	<u>Special Revenue Fund</u>	<u>Total Governmental Funds</u>
Funded Providers	\$ 8,425,046	\$ 131,664	\$ 8,556,710
Administrative	428,513	25,000	453,513
Professional Services & Other	19,699	2,216	21,915
Salaries & Wages Payable	248,459	14,929	263,388
Employee Reimbursements	2,372	-	2,372
Total Accounts Payable and	<u>\$ 9,124,089</u>	<u>\$ 173,809</u>	<u>\$ 9,297,898</u>

4. INTERFUND RECEIVABLES AND PAYABLES

Interfund Receivables and Payables at September 30, 2017 are as follows:

	<u>Interfund Receivable</u>	<u>Interfund Payable</u>
General Fund	\$ 300,000	\$ -
Special Revenue Fund	-	300,000
Total	<u>\$ 300,000</u>	<u>\$ 300,000</u>

The purpose of these transactions is to account for salaries and wages payable between the governmental funds, as well as the temporary borrowing between the federal grants in the Special Revenue Fund and the General Fund.

CHILDREN'S SERVICES COUNCIL OF BROWARD COUNTY

**Notes to the Financial Statements
September 30, 2017**

5. PROPERTY TAXES

Florida Statutes permit the Council to levy taxes up to 0.5 mills per \$1,000 of assessed valuation. The rate levied for the Council for fiscal year 2017 was 0.4882 mills, leaving the millage rate level from the prior fiscal year. However, due to increased property values the tax revenue increased 7.9%. Property taxes are levied each November 1 on the assessed value listed as of the prior January 1 for real and personal property located within Broward County. The adjusted assessed value at July 1, 2016 upon which the fiscal year 2017 levy was based, was approximately \$163.4 billion. The property taxes receivable from the tax collector was \$11,923 at September 30, 2017.

6. CAPITAL ASSETS ACTIVITY

The following is a summary of capital asset activity for the fiscal year ended September 30, 2017:

	Balance at Oct 1, 2016	Additions	Deletions	Balance at Sept 30, 2017
Capital Assets:				
Capital Assets Not Depreciated:				
Land	\$ 2,500,000	\$ -	\$ -	\$ 2,500,000
Intangibles-Work in Progress	-	63,247	-	63,247
Capital Assets Depreciated:				
Building	6,047,681	-	-	6,047,681
Building Infrastructure	269,422	-	-	269,422
Computer Hardware/Software	1,566,177	19,359	(1,008,028)	577,508
Intangible Assets	247,493	-	(247,493)	-
Furniture and Equipment	323,511	128,839	-	452,350
Total Capital Assets	10,954,284	211,445	(1,255,521)	9,910,208
Less Accumulated Depreciation:				
Building	1,454,981	200,130	-	1,655,111
Building Infrastructure	87,181	11,562	-	98,743
Computer Hardware/Software	1,454,981	78,748	(1,008,028)	525,701
Intangible Assets	214,154	33,339	(247,493)	-
Furniture and Equipment	322,881	23,059	-	345,940
Total Accumulated Depreciation	3,534,178	346,838	(1,255,521)	2,625,495
Capital Assets	\$ 7,420,106	\$ (135,393)	\$ -	\$ 7,284,713

CHILDREN’S SERVICES COUNCIL OF BROWARD COUNTY

**Notes to the Financial Statements
September 30, 2017**

6. CAPITAL ASSETS ACTIVITY, (Continued)

Depreciation expense was charged to the following functions during the year:

Program Administration	\$ 69,133
General Administration	<u>277,705</u>
Total Depreciation Expense	<u>\$ 346,838</u>

7. RETIREMENT PLANS-Florida Retirement System

General Information - All of the Council’s employees participate in the Florida Retirement System (FRS). As provided by Chapters 121 and 112, Florida Statutes, the FRS provides two cost sharing, multiple employer defined benefit plans administered by the Florida Department of Management Services, Division of Retirement, including the FRS Pension Plan (“Pension Plan”) and the Retiree Health Insurance Subsidy (“HIS Plan”). Under Section 121.4501, Florida Statutes, the FRS also provides a defined contribution plan (“Investment Plan”) alternative to the FRS Pension Plan, which is administered by the State Board of Administration (“SBA”). As a general rule, membership in the FRS is compulsory for all employees working in a regularly established position for a state agency, county agency, district school board or state university or college within the State of Florida. Participation by cities, municipalities, special districts, charter schools and metropolitan planning organizations is optional. The FRS provides retirement and disability benefits, annual cost-of-living adjustments, and death benefits to plan members and beneficiaries. Benefits are established by Chapter 121, Florida Statutes and amendments to the law can be made only by an act of the Florida State Legislature.

Various classes of membership include: Regular class members, Special Risk Administrative Support class members, Special Risk class members (sworn law enforcement officers, firefighters, and correctional officers), Senior Management Service class members, and Elected Officers’ class members. The Council only has employees in two of these classes – Regular Class and Senior Management Service Class. Detailed plan information on the other classes can be found on the website referenced below.

The State of Florida annually issues a publicly available financial report that includes financial statements and required supplementary information for the FRS. The latest available report may be obtained by writing to the State of Florida Division of Retirement, Department of Management Services, P.O. Box 9000, Tallahassee, Florida 32315-9000, or from the Web site:
www.dms.myflorida.com/workforce_operations/retirement/publications.

CHILDREN'S SERVICES COUNCIL OF BROWARD COUNTY

Notes to the Financial Statements

September 30, 2017

7. RETIREMENT PLANS-Florida Retirement System (continued)

Plan Description – The Pension Plan is a cost-sharing multiple-employer defined benefit pension plan, with a Deferred Retirement Option Program (“DROP”) for eligible employees.

Benefits Provided - Benefits under the Pension Plan are computed based on age and/or years of service, average final compensation, and service credit. For Pension Plan members enrolled before July 1, 2011, Regular class members who retire at or after age 62 with at least six years of credited service or 30 years of service regardless of age, are entitled to a retirement benefit payable monthly for life, equal to 1.6% of their final average compensation based on the five highest years of salary, for each year of credited service. Vested members with less than 30 years of service may retire before age 62 and receive reduced retirement benefits. Senior Management Service class members who retire at or after age 62 with at least six years of credited service or 30 years of service regardless of age are entitled to a retirement benefit payable monthly for life, equal to 2.0% of their final average compensation based on the five highest years of salary for each year of credited service.

For Plan members enrolled on or after July 1, 2011, the vesting requirement is extended to eight years of credited service for all these members and increasing normal retirement to age 65 or 33 years of service regardless of age for Regular and Senior Management Service class members. In addition, the final average compensation for these members will be based on the eight highest years of salary.

As provided in Section 121.101, Florida Statutes, if the member is initially enrolled in the Pension Plan before July 1, 2011, and all service credit was accrued before July 1, 2011, the annual cost-of- living adjustment is three percent per year. If the member is initially enrolled before July 1, 2011, and has service credit on or after July 1, 2011, there is an individually calculated cost-of-living adjustment. The annual cost-of-living adjustment is a proportion of three percent determined by dividing the sum of the pre-July 2011 service credit by the total service credit at retirement multiplied by three percent. Plan members initially enrolled on or after July 1, 2011, will not have a cost-of-living adjustment after retirement.

In addition to the above benefits, the DROP program allows eligible members to defer receipt of monthly retirement benefit payments while continuing employment with a FRS employer for a period not to exceed 60 months after electing to participate. Deferred monthly benefits are held in the FRS Trust Fund and accrue interest. There are no required contributions by DROP participants.

CHILDREN'S SERVICES COUNCIL OF BROWARD COUNTY

Notes to the Financial Statements September 30, 2017

7. RETIREMENT PLANS-Florida Retirement System, (Continued)

Contributions – Effective July 1, 2011, all enrolled members of the FRS, other than DROP participants, are required to contribute three percent of their salary to the FRS. In addition to member contributions, governmental employers are required to contribute to the FRS based on statewide contribution rates established by the Florida Legislature. These rates are updated as of July 1 of each year. The employer contribution rates by job class for the periods from October 1, 2016 through June 30, 2017 and from July 1, 2017 through September 30, 2017, respectively, were as follows: Regular—7.52% and 7.92%; Senior Management Service—21.77% and 22.71%; and DROP participants—12.99% and 13.26%. These employer contribution rates include 1.66% HIS Plan subsidy for the periods October 1, 2016 through June 30, 2017 and from July 1, 2017 through September 30, 2017, respectively.

The Council's contributions, including employee contributions to the Pension Plan, totaled \$424,584 for the fiscal year ended September 30, 2017.

Pension Liabilities, Pension Expense, and Deferred Outflows of Resources and Deferred Inflows of Resources Related to Pensions – At September 30, 2017, the Council reported a liability of \$3,865,205 for its proportionate share of the Pension Plan's net pension liability. The net pension liability was measured as of June 30, 2017, and the total pension liability used to calculate the net pension liability was determined by an actuarial valuation as of July 1, 2017. The Council's proportionate share of the net pension liability was based on the Council's 2016-17 fiscal year contributions relative to the 2015-16 fiscal year contributions of all participating members. At June 30, 2017, the Council's proportionate share was .013067250 percent, which was an increase of .001736338 percent from its proportionate share measured as of June 30, 2016.

CHILDREN'S SERVICES COUNCIL OF BROWARD COUNTY

**Notes to the Financial Statements
September 30, 2017**

7. RETIREMENT PLANS-Florida Retirement System, (Continued)

For the fiscal year ended September 30, 2017, the Council recognized pension expense of \$338,124. In addition, the Council reported deferred outflows of resources and deferred inflows of resources related to pensions from the following sources:

Description	Deferred Outflows of Resources	Deferred Inflow of Resources
Differences between expected and actual experience	\$ 354,733	21,412
Change of assumptions	1,298,982	-
Net difference between projected and actual earnings on Pension Plan investments	-	95,789
Changes in proportion and differences between Council Pension Plan contributions and proportionate share of contributions	456,430	4,733
Council Pension Plan contributions subsequent to the measurement date	96,929	-
Total	<u>\$ 2,207,074</u>	<u>121,934</u>

The deferred outflows of resources related to the Pension Plan, totaling \$96,929 result from Council contributions to the Plan subsequent to the measurement date, and will be recognized as a reduction of the net pension liability in the fiscal year ended September 30, 2018. Other amounts reported as deferred outflows of resources and deferred inflows of resources related to the Pension Plan will be recognized in pension expense as follows:

Fiscal Year Ending September 30:	<u>Amount</u>
2018	\$ 332,688
2019	665,193
2020	454,828
2021	123,038
2022	299,187
Thereafter	113,277
Total	<u>\$ 1,988,211</u>

CHILDREN'S SERVICES COUNCIL OF BROWARD COUNTY

Notes to the Financial Statements

September 30, 2017

7. RETIREMENT PLANS-Florida Retirement System, (Continued)

Actuarial Assumptions – The total pension liability in the June 30, 2017 actuarial valuation was determined using the following actuarial assumption, applied to all period included in the measurement:

Inflation	2.60 %
Salary increases	3.25%, average, including inflation
Investment rate of return	7.10%, net of pension plan investment expense, including inflation

Mortality rates were based on the Generational RP-2000 with Projection Scale BB tables.

The actuarial assumptions used in the July 1, 2017, valuation were based on the results of an actuarial experience study for the period July 1, 2008 through June 30, 2013.

Long-Term Expected Rate of Return

The long-term expected rate of return assumption of 7.10 percent consists of two building block components: 1) a real (in excess of inflation) return of 4.50 percent, consistent with the currently articulated real return target in the current Florida State Board of Administration's investment policy, developed using capital market assumptions calculated by Aon Hewitt Investment Consulting; and 2) a long-term average annual inflation assumption of 2.60 percent as adopted in October 2017 by the FRS Actuarial Assumption Conference. In the opinion of the FRS consulting actuary, Milliman, both components and the overall 7.10 percent return assumption were determined to be reasonable and appropriate per the Actuarial Standards of Practice. The 7.10 percent reported investment return assumption differs from the 7.50 percent investment return assumption chosen by the 2017 FRS Actuarial Assumption Conference for funding policy purposes, as allowable under governmental accounting and reporting standards. The table below shows Milliman's assumptions for each of the asset classes in which the plan was invested at that time based on the long-term target asset allocation. The FRS allocation policy's description of each asset class was used to map the target allocation to the asset classes shown below. Each asset class assumption is based on a consistent set of underlying assumptions, and includes an adjustment for the inflation assumption. These assumptions are not based on historical returns, but instead are based on a forward-looking capital market economic model.

CHILDREN'S SERVICES COUNCIL OF BROWARD COUNTY

**Notes to the Financial Statements
September 30, 2017**

7. RETIREMENT PLANS-Florida Retirement System, (Continued)

<u>Asset Class</u>	<u>Target Allocation (1)</u>	<u>Annual Arithmetic Return</u>	<u>Compound Annual (Geometric) Return</u>	<u>Standard Deviation</u>
Cash	1.0%	3.0%	3.0%	1.8%
Fixed Income	18.0%	4.5%	4.4%	4.2%
Global Equity	53.0%	7.8%	6.6%	17.0%
Real Estate (property)	10.0%	6.6%	5.9%	12.8%
Private Equity	6.0%	11.5%	7.8%	30.0%
Strategic Investments	12.0%	6.1%	5.6%	9.7%
Assumed Inflation – Mean			2.6%	1.9%

Discount Rate - The discount rate used to measure the total pension liability was 7.10%. The Pension Plan's fiduciary net position was projected to be available to make all projected future benefit payments of current active and inactive employees. Therefore, the discount rate for calculation of the total pension liability is equal to the long-term expected rate of return.

Sensitivity of the Council's Proportionate Share of the Net Position Liability to Changes in the Discount Rate - The following represents the Council's proportionate share of the net pension liability calculated using the discount rate of 7.10%, as well as what the Council's proportionate share of the net pension liability would be if it were calculated using a discount rate that is one percentage point lower (6.10%) or one percentage point higher (8.10%) than the current rate:

	<u>1% Decrease (6.10%)</u>	<u>Current Discount Rate (7.10%)</u>	<u>1% Increase (8.10%)</u>
Council's proportionate share of the net pension liability	\$ 6,995,787	\$ 3,865,205	\$ 1,266,104

Pension Plan Fiduciary Net Position - Detailed information regarding the Pension Plan's fiduciary net position is available in the separately issued FRS Pension Plan and Other State-Administered Systems Comprehensive Annual Financial Report.

CHILDREN'S SERVICES COUNCIL OF BROWARD COUNTY

Notes to the Financial Statements

September 30, 2017

7. RETIREMENT PLANS-Florida Retirement System, (Continued)

Payables to the Pension Plan - At September 30, 2017, the Council reported a payable in the amount of \$45,260 for outstanding contributions to the Pension Plan required for the fiscal year ended September 30, 2017.

HIS Plan

Plan Description – The HIS Plan is a cost-sharing multiple-employer defined benefit pension plan established under Section 112.363, Florida Statutes, and may be amended by the Florida legislature at any time. The benefit is a monthly payment to assist retirees of State-administered retirement systems in paying their health insurance costs and is administered by the Florida Department of Management Services, Division of Retirement.

Benefits Provided – For the fiscal year ended September 30, 2017, eligible retirees and beneficiaries received a monthly HIS payment of \$5 for each year of creditable service completed at the time of retirement, with a minimum HIS payment of \$30 and a maximum HIS payment of \$150 per month. To be eligible to receive these benefits, a retiree under a State-administered retirement system must provide proof of health insurance coverage, which may include Medicare.

Contributions – The HIS Plan is funded by required contributions from FRS participating employers as set by the Florida Legislature. Employer contributions are a percentage of gross compensation for all active FRS members. For the fiscal year ended September 30, 2017, the HIS contribution for the period October 1, 2016 through September 30, 2017 was 1.66%. The Council contributed 100% of its statutorily required contributions for the current and preceding three years. HIS Plan contributions are deposited in a separate trust fund from which payments are authorized. HIS Plan benefits are not guaranteed and are subject to annual legislative appropriation. In the event legislative appropriation or available funds fail to provide full subsidy benefits to all participants, benefits may be reduced or cancelled.

The Council's contributions to the HIS Plan totaled \$5,707 for the fiscal year ended September 30, 2017.

CHILDREN'S SERVICES COUNCIL OF BROWARD COUNTY

Notes to the Financial Statements

September 30, 2017

7. RETIREMENT PLANS-Florida Retirement System, (Continued)

Pension Liabilities, Pension Expense, and Deferred Outflows of Resources and Deferred Inflows of Resources Related to Pensions – At September 30, 2017, the Council reported a liability of \$1,647,434 for its proportionate share of the HIS Plan's net pension liability. The net pension liability was measured as of June 30, 2017, and the total pension liability used to calculate the net pension liability was determined by an actuarial valuation as of July 1, 2017. The Council's proportionate share of the net pension liability was based on the Council's 2016-17 fiscal year contributions relative to the 2015-16 fiscal year contributions of all participating members. At June 30, 2017, the Council's proportionate share was .015407438 percent, which was an increase of .0013474869 percent from its proportionate share measured as of June 30, 2016.

For the fiscal year ended September 30, 2017, the Council recognized pension expense of \$5,708. In addition, the Council reported deferred outflows of resources and deferred in flows of resources related to pensions from the following sources:

Description	Deferred Outflows of Resources	Deferred Inflows of Resources
Differences between expected and actual experience	\$ -	\$ 3,430
Change of assumptions	231,573	142,456
Net difference between projected and actual earnings on HIS Plan investments	914	-
Changes in proportion and differences between Council HIS Plan contributions and proportionate share of contributions	240,820	-
Council HIS Plan contributions subsequent to the measurement date	21,219	-
Total	<u>\$ 494,526</u>	<u>\$ 145,886</u>

CHILDREN'S SERVICES COUNCIL OF BROWARD COUNTY

**Notes to the Financial Statements
September 30, 2017**

7. RETIREMENT PLANS-Florida Retirement System, (Continued)

The deferred outflows of resources related to the HIS Plan, totaling \$21,219 resulting from Council contributions to the HIS Plan subsequent to the measurement date, will be recognized as a reduction of the net pension liability in the fiscal year ended September 30, 2018. Other amounts reported as deferred outflows of resources and deferred inflows of resources related to the HIS Plan will be recognized in pension expense as follows:

Fiscal Year Ending September 30:	<u>Amount</u>
2018	\$ 73,653
2019	73,480
2020	73,397
2021	63,970
2022	40,138
Thereafter	2,783
Total	<u>\$ 327,421</u>

Actuarial Assumptions – The total pension liability in the July 1, 2017, actuarial valuation was determined using the following actuarial assumptions, applied to all periods included in the measurement:

Inflation	2.60 %
Salary increases	3.25%, average, including inflation
Municipal bond rate	3.58%

Mortality rates were based on the Generational RP-2000 with Projection Scale BB tables. The discount rate used was updated from 2.85 percent to 3.58 percent as of June 30, 2017, reflecting the change during the fiscal year in the Bond Buyer General Obligation 20- Bond Municipal Bond Index.

The actuarial assumptions used in the July 1, 2017, valuation were based on the results of an actuarial experience study for the period July 1, 2008 through June 30, 2013.

CHILDREN'S SERVICES COUNCIL OF BROWARD COUNTY

Notes to the Financial Statements

September 30, 2017

7. RETIREMENT PLANS-Florida Retirement System, (Continued)

Discount Rate - The discount rate used to measure the total pension liability was 3.58%. In general, the discount rate for calculating the total pension liability is equal to the single rate equivalent to discounting at the long-term expected rate of return for benefit payments prior to the projected depletion date. Because the HIS benefit is essentially funded on a pay-as-you-go basis, the depletion date is considered to be immediate, and the single equivalent discount rate is equal to the municipal bond rate selected by the HIS Plan sponsor. The Bond Buyer General Obligation 20-Bond Municipal Bond Index was adopted as the applicable municipal bond index.

Sensitivity of the County's Proportionate Share of the Net Position Liability to Changes in the Discount Rate - The following represents the Council's proportionate share of the net pension liability calculated using the discount rate of 3.58%, as well as what the Council's proportionate share of the net pension liability would be if it were calculated using a discount rate that is one percentage point lower (2.58%) or one percentage point higher (4.58%) than the current rate:

	1% Decrease (2.58%)	Current Discount Rate (3.58%)	1% Increase (4.58%)
Council's proportionate share of the net pension liability	\$ 1,879,941	\$ 1,647,434	\$ 1,453,769

Pension Plan Fiduciary Net Position - Detailed information regarding the HIS Plan's fiduciary net position is available in the separately issued FRS Pension Plan and Other State-Administered Systems Comprehensive Annual Financial Report.

Payables to the Pension Plan - At September 30, 2017, the Council reported a payable in the amount of \$539 for outstanding contributions to the HIS Plan required for the fiscal year ended September 30, 2017.

The SBA administers the defined contribution plan officially titled the FRS Investment Plan. The investment Plan is reported in the SBA's annual financial statements and in the State of Florida Comprehensive Annual Financial Report.

CHILDREN'S SERVICES COUNCIL OF BROWARD COUNTY

Notes to the Financial Statements

September 30, 2017

7. RETIREMENT PLANS-Florida Retirement System, (Continued)

Investment Plan

As provided in Section 121.4501, Florida Statutes, eligible FRS members may elect to participate in the Investment Plan in lieu of the FRS defined benefit plan. Council employees participating in DROP are not eligible to participate in the Investment Plan. Employer and employee contributions, including amounts contributed to individual member's accounts, are defined by law, but the ultimate benefit depends in part on the performance of investment funds. Benefit terms, including contribution requirements, for the Investment Plan are established and may be amended by the Florida Legislature. The Investment Plan is funded with the same employer and employee contribution rates that are based on salary and membership class (Regular Class, Senior Management, etc.), as the Pension Plan. Contributions are directed to individual member accounts, and the individual members allocate contributions and account balances among various approved investment choices. Costs of administering the Investment Plan, including the FRS Financial Guidance Program, are funded through an employer contribution of 0.04 percent of payroll and by forfeited benefits of plan members. Allocations to the investment member's accounts during the 2016-17 fiscal year, as established by Section 121.72, Florida Statutes, are based on a percentage of gross compensation, by class, as follows: Regular class 6.30% and Senior Management Service class 7.67%.

For all membership classes, employees are immediately vested in their own contributions and are vested after one year of service for employer contributions and investment earnings. If an accumulated benefit obligation for service credit originally earned under the Pension Plan is transferred to the Investment Plan, the member must have the years of service required for Pension Plan vesting (including the service credit represented by the transferred funds) to be vested for these funds and the earnings on the funds. Nonvested employer contributions are placed in a suspense account for up to five years. If the employee returns to FRS-covered employment within the five-year period, the employee will regain control over their account. If the employee does not return within the five-year period, the employee will forfeit the accumulated account balance.

For the fiscal year ended September 30, 2017, the information related to the amount of forfeitures was unavailable from the SBA; however, management believes that these amounts, if any, would be immaterial to the Council.

CHILDREN'S SERVICES COUNCIL OF BROWARD COUNTY

Notes to the Financial Statements

September 30, 2017

7. RETIREMENT PLANS-Florida Retirement System, (Continued)

After termination and applying to receive benefits, the member may rollover vested funds to another qualified plan, structure a periodic payment under the Investment Plan, receive a lump-sum distribution, leave the funds invested for future distribution, or any combination of these options. Disability coverage is provided; the member may either transfer the account balance to the Pension Plan when approved for disability retirement to receive guaranteed lifetime monthly benefits under the Pension Plan, or remain in the Investment Plan and rely upon that account balance for retirement income.

The Council's Investment Plan pension expense, including employee contributions to the Investment Plan totaled \$233,417 for the fiscal year ended September 30, 2017.

Deferred Compensation Plan

The Council offers its employees a deferred compensation plan created in accordance with Internal Revenue Code 457. The Plan is available to all full-time employees and permits them to defer a portion of their salary. Under the provisions of IRC Section 457, all assets and income are managed by a third party administrator with no relationship to the Council. Accordingly, the assets and liabilities of the Plan are not included in the Council's financial statements.

8. POST-EMPLOYMENT BENEFITS OTHER THAN PENSIONS (OPEB)

General Information about the OPEB Plan

Plan description- The Council's defined benefit OPEB plan, provides OPEB for all permanent full time employees, and is a single employer benefit plan administered by the Council. Chapter 627 of the Florida Statutes requires that the Council make health coverage available to retirees at the employer's group rate. The Council provides no funding for any portion of the premiums after retirement. However, the Council recognizes that there is an "implicit subsidy" arising because of the blended rate premium since retiree health care costs, on average, are higher than active employee healthcare costs. The plan is not accounted for as a trust fund and an irrevocable trust has not been established to fund this plan. The plan does not issue a separate financial report. It is the Council's current policy to fund the plan on a "pay-as-you-go" basis. There are no assets accumulated in a trust that meets the criteria in paragraph 4 of Statement 75.

CHILDREN'S SERVICES COUNCIL OF BROWARD COUNTY

Notes to the Financial Statements

September 30, 2017

8. POST-EMPLOYMENT BENEFITS OTHER THAN PENSIONS, (Continued)

Benefits provided- Employees who retire from the Council and their dependents are eligible to continue to participate in the Council's health insurance, life insurance, and long-term care benefits currently offered through the Council at the "blended" employee group rate, which the Council determines on an annual basis. The retiree must continue to meet all participation requirements and pay all applicable premiums by the specified due date. Life insurance and long-term care benefits are portable and the retiree must pay premiums to the carrier directly. The Council provides no funding for any portion of the premiums after retirement.

Employees covered by the benefit terms- As of September 30, 2017, there is one (1) retiree participating in the group health program, and sixty-three (63) active employees with health insurance coverage. There seven (7) active employees without coverage who are assumed not to elect retiree health coverage and do not generate GASB Statement No.75 liabilities.

Total OPEB Liability

The Council's total OPEB liability of \$98,400 was measured as of September 30, 2017, and was determined by an actuarial valuation as of that date.

Actuarial assumptions and other inputs: The total OPEB liability in the September 30, 2017 valuation was determined using the following actuarial assumptions and other inputs, applied to all periods included in the measurement, unless otherwise specified:

Discount Rate:	3.50%
Inflation Rate:	2.60%
Healthcare Trend Rate	9.00%
Retiree's Cost Sharing	Borne by the retiree
Healthcare Coverage Election Rate	25% active employees 100% inactive employees

The payroll growth assumption is based on the Florida Retirement Systems actuarial valuation as of July 1, 2015.

Mortality rates were based on the RPH-2017 Total Dataset Headcount-weighted Mortality Table using Scale MP-2017.

CHILDREN'S SERVICES COUNCIL OF BROWARD COUNTY

Notes to the Financial Statements

September 30, 2017

8. POST-EMPLOYMENT BENEFITS OTHER THAN PENSIONS, (Continued)

Changes in the Total OPEB Liability

	Total OPEB Liability
Balance as at 9/30/2016	<u>\$ 181,346</u>
Changes for the fiscal year:	
Service Cost	28,867
Interest	5,505
Changes of benefit terms	-
Differences between expected and actual experience	(30,071)
Changes in assumptions for other inputs	(79,636)
Benefit payments	(7,611)
Net changes	<u>\$ (82,946)</u>

Sensitivity of the Total OPEB Liability to changes in the Discount Rate

The following presents the total OPEB liability of the Council, as well as what the Council's total OPEB liability would be if it were calculated using a discount rate that is one percentage point lower (2.5%), or one percentage higher (4.5%) than the current discount rate:

	1% Decrease (2.50%)	Discount Rate (3.50%)	1% Increase (4.50%)
Total OPEB Liability	\$ 103,636	\$ 98,400	\$ 92,954

Sensitivity of the Total OPEB Liability to changes in the Healthcare Trend Rate

The following presents the total OPEB liability of the Council, as well as what the Council's total OPEB liability would be if it were calculated using a healthcare trend rate that is one percentage point lower (8%), or one percentage higher (10%) than the current healthcare trend rate:

	1% Decrease (8.00%)	Healthcare Trend Rate (9.00%)	1% Increase (10.00%)
Total OPEB Liability	\$ 85,194	\$ 98,400	\$ 114,020

CHILDREN'S SERVICES COUNCIL OF BROWARD COUNTY

Notes to the Financial Statements

September 30, 2017

8. POST-EMPLOYMENT BENEFITS OTHER THAN PENSIONS, (Continued)

OPEB Expense, Deferred Outflows of Resources and Deferred Inflows of Resources Related to OPEB-For the fiscal year ended September 30, 2017; the Council recognized OPEB expense of \$13,047. The Council reported deferred inflows of resources related to OPEB from the following sources:

Description	Deferred Inflows of Resources
Differences between expected and actual experience	\$ 26,312
Changes of assumptions or other inputs	69,681
Total	<u>\$ 95,993</u>

Amounts reported as deferred inflows of resources related to OPEB will be recognized in OPEB expense as follows:

Fiscal Year Ending September 30:	<u>Amount</u>
2018	\$ 13,714
2019	13,714
2020	13,714
2021	13,714
2022	13,714
Thereafter	27,423
Total	<u>\$ 95,993</u>

9. INSURANCE ACTIVITIES

The Council is exposed to the various risks of loss related to torts, theft of, damage to and destruction of assets, errors and omissions, injuries to employees, and natural disasters. The Council purchases commercial insurance to cover the various risks. Retention of risks is limited to the excess of those that are insured, those that are uninsurable, and deductibles ranging generally from \$1,000 to \$2,500 per occurrence. There were no settled claims, which exceeded insurance coverage since inception of the Council. The Council is required by Florida Statute to provide a surety bond in the sum of at least \$1,000 for each \$1 million portion thereof of the Council's budget for the Chair, Vice-Chair, Secretary and President/CEO. This surety bond is included in the insurance coverage purchased through commercial carriers.

CHILDREN'S SERVICES COUNCIL OF BROWARD COUNTY

**Notes to the Financial Statements
September 30, 2017**

10. COMMITMENTS AND CONTINGENCIES

Operating Leases:

The Council is committed under various operating leases for office equipment through fiscal year 2017. Lease expenditures for office equipment for the fiscal year ended September 30, 2017 amounted to \$21,350. Future minimum base lease payments for these leases are as follows:

Fiscal Year Ending September 30,	Minimum Equipment Lease Payment
2018	\$ 18,081
2019	18,081
2020	18,081
2021	14,092
	<u>\$ 68,335</u>

Encumbrances:

Purchase orders are issued throughout the fiscal year to encumber budgets in the governmental funds. Significant encumbrances as of September 30, 2017 that will be re-appropriated in the subsequent year are as follows:

General Fund:	
Program Services and Support	\$ 1,532,281
General Administration	370,730
Facilities Reserves	145,097
Capital Outlay	222,650
Total Encumbrances	<u>\$ 2,270,758</u>

CHILDREN'S SERVICES COUNCIL OF BROWARD COUNTY

**Notes to the Financial Statements
September 30, 2017**

11. LONG-TERM LIABILITIES

The following is a summary of long-term liabilities for fiscal year ended September 30, 2017:

	Beginning Balance Oct 1, 2016	Increases	Decreases	Ending Balance Sept 30, 2017	Amount Due Within One Year
Compensated Absences:					
Vacation Accrual	\$ 625,372	\$ 450,391	\$ (442,568)	633,195	\$ 63,319
Sick Leave Accrual	110,231	193,671	(149,596)	154,306	15,431
Net Pension Liability	4,496,502	1,016,137	-	5,512,639	-
Net OPEB Liability	181,346	-	(82,946)	98,400	-
Total Long Term Liabilities	\$ 5,413,451	\$ 1,660,199	\$ (675,110)	\$ 6,398,540	\$ 78,750

For governmental activities, compensated absences and Net OPEB obligations are generally liquidated by the General Fund.

12. FUND BALANCE

In accordance with GASB No. 54, fund balances (Note 1) are classified as follows:

- *Nonspendable Fund Balance* – amounts that are not in spendable form or are legally or contractually required to be maintained intact. The Council classified \$187,407 of prepaid items as Nonspendable since these items are not expected to be converted to cash.
- *Restricted Fund Balance* – amounts constrained to specific purposes by external providers (such as grantors) or imposed by law through constitutional provisions, or by enabling legislation. The Council does not have any Restricted Fund Balance.

CHILDREN'S SERVICES COUNCIL OF BROWARD COUNTY

Notes to the Financial Statements

September 30, 2017

12. FUND BALANCE, (Continued)

- *Committed Fund Balance* – amounts constrained to specific purposes by the formal action of the Council itself, using its highest level of decision-making authority. To be reported as committed, amounts cannot be used for any other purpose unless the Council Members take the same highest-level action (i.e., Resolution or Issue Paper) to remove or change the constraint. The Council does not have any Committed Fund Balance.
- *Assigned Fund Balance* – amounts the Council intends to use for a specific purpose but are neither restricted nor committed. Intent can be expressed by the Council Members or by an official to which the Council Members delegates authority. The Council has a total of \$5,470,758 in Assigned Fund Balance, which can be further classified in two categories: Assigned for Outstanding Encumbrances and Assigned for Subsequent Year's Budget. The encumbrances include \$1,532,281 for various programmatic goals and support in the subsequent year, while the remaining \$738,477 of encumbrances is for general administration, facility reserves and capital outlay. The second category of Assigned Fund Balance is \$3.2 million for programmatic purposes appropriated in the subsequent year's budget to offset additional ad valorem taxes.
- *Unassigned Fund Balance* – amounts that have not been assigned to other funds and that have not been restricted, committed or assigned to specific purposes within the general fund. The Council adopted a minimum fund balance policy to be used for unanticipated emergencies of approximately 8% to 10% of the budgeted expenditures. This minimum fund amount of Unassigned Fund Balance is \$7,960,975. The remaining Unassigned Fund Balance is \$2,572,334.

13. GRANT FUNDING

Funding agreements for various grants are entered into on an annual basis. The release of funds is subject to terms and deliverables agreed upon with the grantor agencies. As of September 30, 2017, the Council reported \$1,398,945 in grant funding, including State matching funds amounting to \$189,655 from the State of Florida Department of Children and Families. The State matching funds are not subject to Florida Single Audit.

CHILDREN'S SERVICES COUNCIL OF BROWARD COUNTY

Notes to the Financial Statements

September 30, 2017

13. GRANT FUNDING, (Continued)

Certain funding arrangements require the Council to provide additional services on a specified matching basis. In all such contract arrangements, the Council has met its matching requirements. Matching requirements fulfilled are as follows:

<u>Grantor/Program</u>	<u>Year</u>	<u>Grant Number</u>	<u>Match Amount</u>
US Department of Education and the Florida Department of Education: Performance Pilot Project ("P3") and 21st Century Community Learning Centers	2017	----	\$ 827,194
Total Match			<u>\$ 827,194</u>

14. CONTINGENCY

The grant revenue amounts are subject to audit and adjustment. If any expenditures or expenses were disallowed by the grantor agencies because of such an audit, any claim for reimbursement to the grantor agencies would become a liability of the Council. In the opinion of management, all grant expenditures are in compliance with the terms of the grant agreements and applicable federal and state laws and regulations.



Required Supplementary Information



CHILDREN'S SERVICES COUNCIL OF BROWARD COUNTY
General Fund
Schedule of Revenues, Expenditures, and Changes
in Fund Balance - Budget to Actual
Fiscal Year Ended September 30, 2017

	Original Budget	Final Budget	Actual	Variance with Final Budget
Revenues:				
Ad Valorem Taxes	\$ 75,798,568	\$ 75,798,568	\$ 75,990,468	\$ 191,900
Grant Funding	150,000	150,000	189,655	39,655
Investment Earnings	35,000	35,000	419,042	384,042
Miscellaneous Local	931,316	1,219,943	1,199,909	(20,034)
Total Revenues	76,914,884	77,203,511	77,799,074	595,563
Expenditures:				
Program Services and Support:				
Program Services	70,162,113	70,450,740	65,066,661	5,384,079
Monitoring/Outcome Materials	73,000	73,000	60,295	12,705
Employee Salaries and Benefits	5,324,838	5,320,355	4,833,986	486,369
Other Consultants	68,000	68,000	2,902	65,098
Material and Supplies	7,770	7,770	2,489	5,281
Printing and Advertising	7,000	10,000	4,578	5,422
Software Maintenance	45,369	31,917	17,054	14,863
Travel and Other Expenditures	116,688	131,623	74,527	57,096
Total Program Services and Support	75,804,778	76,093,405	70,062,492	6,030,913
General Administration:				
Employee Salaries and Benefits	2,219,665	2,219,665	2,063,810	155,855
Legal Fees	35,000	35,000	32,745	2,255
Auditors and Other Consultants	59,000	59,000	42,605	16,395
Materials and Supplies	50,938	49,638	22,922	26,716
Printing and Advertising	20,670	18,270	6,252	12,018
Other General Administration	602,713	594,642	343,668	250,974
Telecommunications	63,000	63,205	39,502	23,703
Travel and Other Expenditures	125,137	128,632	92,923	35,709
Tax Collection Fees	476,821	476,821	475,628	1,193
Community Redevelopment Area Fees	2,436,600	2,436,600	2,306,412	130,188
Total General Administration	6,089,544	6,081,473	5,426,467	655,006

CHILDREN'S SERVICES COUNCIL OF BROWARD COUNTY
General Fund
Schedule of Revenues, Expenditures, and Changes
in Fund Balance - Budget to Actual
Fiscal Year Ended September 30, 2017, (Continued)

	Original Budget	Final Budget	Actual	Variance with Final Budget
Capital Outlay:				
Computer Hardware/Software	435,295	289,778	74,111	215,667
Furniture/ Equipment	13,262	166,850	144,750	22,100
Total Capital Outlay	<u>448,557</u>	<u>456,628</u>	<u>218,861</u>	<u>237,767</u>
Total Expenditures	<u>82,342,879</u>	<u>82,631,506</u>	<u>75,707,820</u>	<u>6,923,686</u>
Excess (Deficiency) of Revenues Over Expenditures	<u>\$ (5,427,995)</u>	<u>\$ (5,427,995)</u>	2,091,254	<u>\$ 7,519,249</u>
Beginning Fund Balance			<u>14,100,220</u>	
Ending Fund Balance			<u>\$ 16,191,474</u>	

NOTE: GAAP serves as the budgetary basis.



CHILDREN'S SERVICES COUNCIL OF BROWARD COUNTY
Special Revenue Fund
Schedule of Revenues, Expenditures, and Changes
in Fund Balance - Budget to Actual
Fiscal Year Ended September 30, 2017

	Original Budget	Final Budget	Actual	Variance with Final Budget
Revenue:				
Local Sources:				
Grant Funding	\$ 1,658,591	\$ 1,650,865	\$ 1,209,290	(441,575)
Expenditures:				
Program Services:				
Program Services	1,369,544	1,256,039	1,052,391	203,648
Program Administration:				
Employee Salaries and Benefits	133,620	141,120	125,856	15,264
Other Consultants	38,000	3,400	3,400	-
Software Maintenance	112,794	243,030	25,000	218,030
Travel and Other Expenditures	4,633	7,276	2,643	4,633
Total Program Administration	289,047	394,826	156,899	237,927
Total Expenditures	1,658,591	1,650,865	1,209,290	441,575
Excess (Deficiency) of Revenues Over Expenditures	\$ -	\$ -	-	\$ -
Beginning Fund Balance			-	
Ending Fund Balance			\$ -	

NOTE: GAAP serves as the budgetary basis.



CHILDREN'S SERVICES COUNCIL OF BROWARD COUNTY
Schedule of Proportionate Share of Net Pension Liability
Florida Retirement System - Pension Plan
Last Four Years*

	2017	2016	2015	2014
Children's Services Council of Broward County's proportion of the net pension liability	0.0130672500%	0.0113309120%	.011379789%	0.010583942%
Children's Services Council of Broward County's proportionate share of the net pension liability	\$ 3,865,205	\$ 2,861,064	\$ 1,469,852	\$ 645,776
Children's Services Council of Broward County's covered employee payroll	\$ 5,047,763	\$ 4,482,724	\$ 4,060,069	\$ 3,634,125
Children's Services Council of Broward County's proportionate share of the net pension liability as a percentage of its covered-employee payroll	76.57%	63.82%	36.20%	17.77%
Plan fiduciary net position as a percentage of the total pension liability	83.89%	84.88%	92.00%	96.09%

* The amounts presented for each fiscal year were determined as of 9/30.

Note 1: GASB 68 requires information for ten years. However, until a full ten year trend is compiled, information is presented for only those years for which information is available.

CHILDREN'S SERVICES COUNCIL OF BROWARD COUNTY
Schedule of Contributions
Florida Retirement System - Pension Plan
Last Four Years*

	2017	2016	2015	2014
Contractually required contribution	\$ 338,124	\$ 281,726	\$ 254,023	\$ 234,256
Contributions in relation to the contractually required contribution	(338,124)	(281,726)	(254,023)	(234,256)
Contribution deficiency (excess)	\$ -	\$ -	\$ -	\$ -
Children's Services Council of Broward County's covered employee payroll	\$ 5,047,763	\$ 4,482,724	\$ 4,060,069	\$ 3,634,125
Contribution as a percentage of covered-employee payroll	6.70%	6.28%	6.26%	6.45%

* The amounts presented for each fiscal year were determined as of 9/30.

Note 1: GASB 68 requires information for ten years. However, until a full ten year trend is compiled, information is presented for only those years for which information is available.

CHILDREN'S SERVICES COUNCIL OF BROWARD COUNTY
Schedule of Proportionate Share of Net Pension Liability
Florida Retirement System-Health Insurance Subsidy Program
Last Four Years*

	2017	2016	2015	2014
Children's Services Council of Broward County's proportion of the net pension liability	0.0154074380%	0.0140325690%	0.0132139230%	0.012114771%
Children's Services Council of Broward County's proportionate share of the net pension liability	\$ 1,647,434	\$ 1,635,438	\$ 1,347,612	\$ 1,132,761
Children's Services Council of Broward County's covered employee payroll	\$ 5,047,763	\$ 4,482,724	\$ 4,060,069	\$ 3,634,125
Children's Services Council of Broward County's proportionate share of the net pension liability as a percentage of its covered-employee payroll	32.64%	36.48%	33.19%	31.17%
Plan fiduciary net position as a percentage of the total pension liability	1.64%	0.97%	0.50%	0.99%

* The amounts presented for each fiscal year were determined as of 9/30.

Note 1: GASB 68 requires information for ten years. However, until a full ten year trend is compiled, information is presented for only those years for which information is available.

CHILDREN'S SERVICES COUNCIL OF BROWARD COUNTY
Schedule of Contributions
Florida Retirement System-Health Insurance Subsidy Program
Last Four Years*

	2017	2016	2015	2014
Contractually required contribution	\$ 5,708	\$ 4,756	\$ 3,494	\$ 3,666
Contributions in relation to the contractually required contribution	(5,708)	(4,756)	(3,494)	(3,666)
Contribution deficiency (excess)	\$ -	\$ -	\$ -	\$ -
Children's Services Council of Broward County's covered employee payroll	\$ 5,047,763	\$ 4,482,724	\$ 4,060,069	\$ 3,634,125
Contribution as a percentage of covered-employee payroll	0.11%	0.11%	0.09%	0.10%

* The amounts presented for each fiscal year were determined as of 9/30.

Note 1: GASB 68 requires information for ten years. However, until a full ten year trend is compiled, information is presented for only those years for which information is available.

CHILDREN'S SERVICES COUNCIL OF BROWARD COUNTY
Schedule of Changes in Net OPEB Liability and Related Ratios
Fiscal Year Ended September 30, 2017

	2017
Total OPEB Liability:	
Service cost	\$ 28,867
Interest	5,505
Changes of benefit terms	-
Differences between expected and actual experience	(30,071)
Changes in assumptions	(79,636)
Benefit payments	(7,611)
Net Change in total OPEB liability	(82,946)
Total OPEB liability- beginning	181,346
Total OPEB liability- ending	\$ 98,400.00
Covered employee payroll	\$ 5,047,763
Total OPEB liability as a percentage of covered-employee payroll	1.95%

Notes to Schedule:

Changes of assumptions: Changes of assumptions and other inputs reflect the effects of changes in the discount rate each period. The following are the discount rates used in each period:

2017	3.50%
------	-------

Note 1: GASB 75 requires information for ten years. However, until a full ten year trend is compiled, information is presented for only those years for which information is available.





STATISTICAL SECTION



CHILDREN'S SERVICES COUNCIL OF BROWARD COUNTY

**Comprehensive Annual Financial Report
For The Fiscal Year Ended September 30, 2017**

STATISTICAL SECTION

TABLE OF CONTENTS

Financial Trends

These schedules contain trend information to help the reader understand how the Council's financial performance and well-being have changed over time.

Net Position by Component	88
Changes in Net Position	90
Fund Balance, Governmental Funds	92
Changes in Fund Balance, Governmental Funds	94

Revenue Capacity

These schedules contain information to help the reader assess the Council's most significant local revenue source, the property tax.

Assessed Value and Actual Value of Taxable Property	96
Direct and Overlapping Property Tax Rates	98
Principal Property Taxpayers	100
Property Tax Levies and Collections	102

Demographic and Economic Information

These schedules offer demographic and economic indicators to help the reader understand the environment within which the Council's financial activities take place.

Demographic and Economic Statistics	104
Principal Employers	106

Operating Information

These schedules contain service data to help the reader understand how the information in the Council's financial report relates to the services provided and the activities performed.

Full Time Equivalent Employees by Function	108
Operating Indicators	109
Program Budget Indicators	110

CHILDREN'S SERVICES COUNCIL OF BROWARD COUNTY
Net Position by Component
Last Ten Fiscal Years
(accrual basis of accounting)

Governmental Activities

Fiscal Year	Investment in Capital Assets	Unrestricted	Total primary government net position
2008	\$ 225,220	\$ 25,288,416	\$ 25,513,636
2009	8,768,661	13,461,197	22,229,858
2010	9,057,982	11,673,551	20,731,533
2011	8,806,970	13,209,406	22,016,376
2012	8,504,223	12,438,335	20,942,558
2013	8,207,025	13,179,921	21,386,946
2014	7,998,742	12,582,381	20,581,123
2015	7,755,161	10,030,009	17,785,170
2016	7,420,106	10,527,935	17,948,041
2017	7,284,713	12,130,721	19,415,434



CHILDREN'S SERVICES COUNCIL OF BROWARD COUNTY**Changes in Net Position****Last Ten Fiscal Years**

(accrual basis of accounting)

	Fiscal			
	<u>2008</u>	<u>2009</u>	<u>2010</u>	<u>2011</u>
Expenses				
Governmental activities:				
Program Services:				
Program Services	\$ 56,378,547	\$ 57,163,373	\$ 56,101,645	\$ 52,760,094
Program Administration	3,107,866	3,187,482	2,849,711	2,970,323
Total Program Services	<u>59,486,413</u>	<u>60,350,855</u>	<u>58,951,356</u>	<u>55,730,417</u>
General Administration:				
Personal Services	1,430,511	1,477,411	1,391,696	1,489,677
Materials and Services	917,920	843,657	1,276,812	971,462
Community Redevelopment and Tax Collector Fees	1,555,588	1,818,312	1,809,845	1,762,748
Total General Administration	<u>3,904,019</u>	<u>4,139,380</u>	<u>4,478,353</u>	<u>4,223,887</u>
Total primary government expenses	<u>63,390,432</u>	<u>64,490,235</u>	<u>63,429,709</u>	<u>59,954,304</u>
Program Revenues				
Governmental activities:				
Grant Funding, Restricted	939,901	501,488	651,736	271,384
Total primary government program revenue	<u>939,901</u>	<u>501,488</u>	<u>651,736</u>	<u>271,384</u>
Net (Expense)/Revenue				
Total primary government net expense	<u>62,450,531</u>	<u>63,988,747</u>	<u>62,777,973</u>	<u>59,682,920</u>
General Revenues & Other Changes in Net Position				
Governmental activities:				
Property Taxes	60,092,171	59,990,448	60,094,059	57,795,765
Investment Earnings	1,095,569	153,990	280,193	111,354
Grant Funding, Unrestricted	213,830	113,760	308,530	2,572,867
Miscellaneous	311,815	446,771	596,866	487,777
Total primary government	<u>61,713,385</u>	<u>60,704,969</u>	<u>61,279,648</u>	<u>60,967,763</u>
Changes in Net Position				
Total primary government	<u>\$ (737,146)</u>	<u>\$ (3,283,778)</u>	<u>\$ (1,498,325)</u>	<u>\$ 1,284,843</u>

Year					
<u>2012</u>	<u>2013</u>	<u>2014</u>	<u>2015</u>	<u>2016</u>	<u>2017</u>
\$ 53,530,318	\$ 53,775,633	\$ 56,159,891	\$ 58,931,114	\$ 61,201,151	\$ 65,126,956
3,045,224	3,298,033	3,610,414	4,263,718	6,178,792	6,460,890
<u>56,575,542</u>	<u>57,073,666</u>	<u>59,770,305</u>	<u>63,194,832</u>	<u>67,379,943</u>	<u>71,587,846</u>
1,428,134	1,425,869	1,588,115	1,704,943	2,004,709	2,341,237
897,537	974,491	1,042,529	945,109	937,488	928,985
1,679,586	1,716,448	1,856,081	2,043,045	2,393,301	2,782,040
<u>4,005,257</u>	<u>4,116,808</u>	<u>4,486,725</u>	<u>4,693,097</u>	<u>5,335,498</u>	<u>6,052,262</u>
<u>60,580,799</u>	<u>61,190,474</u>	<u>64,257,030</u>	<u>67,887,929</u>	<u>72,715,441</u>	<u>77,640,108</u>
883,762	824,043	710,891	1,084,831	1,362,375	1,209,290
<u>883,762</u>	<u>824,043</u>	<u>710,891</u>	<u>1,084,831</u>	<u>1,362,375</u>	<u>1,209,290</u>
<u>59,697,037</u>	<u>60,366,431</u>	<u>63,546,139</u>	<u>66,803,098</u>	<u>71,353,066</u>	<u>76,430,818</u>
57,483,644	59,584,505	61,362,297	65,140,776	70,246,887	75,990,468
152,865	90,651	16,012	90,344	155,748	419,042
343,463	340,968	391,872	181,858	261,131	189,655
643,247	794,695	970,135	859,668	852,171	1,199,909
<u>58,623,219</u>	<u>60,810,819</u>	<u>62,740,316</u>	<u>66,272,646</u>	<u>71,515,937</u>	<u>77,799,074</u>
<u>\$ (1,073,818)</u>	<u>\$ 444,388</u>	<u>\$ (805,823)</u>	<u>\$ (530,452)</u>	<u>\$ 162,871</u>	<u>\$ 1,368,256</u>

CHILDREN'S SERVICES COUNCIL OF BROWARD COUNTY

Fund Balance, Governmental Funds

Last Ten Fiscal Years

(modified accrual basis of accounting)

Fiscal Year	<u>General Fund</u>					Total General Fund
	Reserved	Unreserved	Nonspendable Fund Balance	Assigned Fund Balance	Unassigned Fund Balance	
2008	\$ 8,104,426	\$ 17,551,403	\$ -	\$ -	\$ -	\$ 25,655,829
2009	331,036	13,616,430	-	-	-	13,947,466
2010*	-	-	101,035	3,153,445	8,972,980	12,227,460
2011			95,387	3,936,835	9,807,825	13,840,047
2012			98,174	3,247,891	9,758,362	13,104,427
2013			92,520	3,797,311	9,970,735	13,860,566
2014			76,899	4,291,669	8,957,185	13,325,753
2015			88,763	4,233,858	8,815,025	13,137,646
2016			86,691	5,507,406	8,506,123	14,100,220
2017			187,407	5,470,758	10,533,309	16,191,474

Note: The Special Revenue fund balance is zero for all years.

*Prior year amounts have not been restated for the implementation of GASB Statement No. 54



CHILDREN'S SERVICES COUNCIL OF BROWARD COUNTY
Changes in Fund Balance, Governmental Funds
Last Ten Fiscal Years

(modified accrual basis of accounting)

	Fiscal			
	<u>2008</u>	<u>2009</u>	<u>2010</u>	<u>2011</u>
Revenues				
Ad Valorem Taxes	\$ 60,092,171	\$ 59,990,448	\$ 60,094,059	\$ 57,795,765
Investment Earnings	1,095,569	153,990	280,193	111,354
Miscellaneous Local	311,815	446,771	609,860	487,777
Grant Funding	1,153,731	615,248	947,272	2,844,251
Total revenues	<u>62,653,286</u>	<u>61,206,457</u>	<u>61,931,384</u>	<u>61,239,147</u>
Expenditures				
Program Services and Support	59,449,996	60,243,914	58,993,365	55,717,450
General Administration	3,792,495	3,968,377	3,889,604	3,773,091
Capital Outlay	35,463	8,702,529	768,421	136,019
Total expenditures	<u>63,277,954</u>	<u>72,914,820</u>	<u>63,651,390</u>	<u>59,626,560</u>
Net change in fund balance	<u>\$ (624,668)</u>	<u>\$ (11,708,363)</u>	<u>\$ (1,720,006)</u>	<u>\$ 1,612,587</u>

Year					
<u>2012</u>	<u>2013</u>	<u>2014</u>	<u>2015</u>	<u>2016</u>	<u>2017</u>
\$ 57,483,644	\$ 59,584,505	\$ 61,362,297	\$ 65,140,776	\$ 70,246,887	\$ 75,990,468
152,865	1,165,011	1,102,763	1,266,689	1,623,506	1,398,945
643,246	90,651	16,012	90,344	155,748	419,042
1,227,225	794,695	970,135	859,668	852,171	1,199,909
59,506,980	61,634,862	63,451,207	67,357,477	72,878,312	79,008,364
56,557,169	57,002,621	59,683,292	63,077,687	67,032,175	71,271,782
3,628,128	3,764,685	4,087,449	4,289,213	4,759,810	5,426,467
57,303	111,417	215,279	178,684	123,753	218,861
60,242,600	60,878,723	63,986,020	67,545,584	71,915,738	76,917,110
\$ (735,620)	\$ 756,139	\$ (534,813)	\$ (188,107)	\$ 962,574	\$ 2,091,254

CHILDREN'S SERVICES COUNCIL OF BROWARD COUNTY
Assessed Value and Actual Value of Taxable Property,
Last Ten Fiscal Years

(In thousands of dollars)

Fiscal Year Ended September 30,	Residential Property	Commercial Property	Industrial Property	Other (1)
2008	\$ 202,323,501	\$ 27,470,156	\$ 8,981,128	\$ 17,485,296
2009	184,410,028	28,944,454	9,889,097	18,069,720
2010	142,046,400	29,497,054	10,102,234	19,167,866
2011	114,761,706	28,197,014	9,407,282	20,617,810
2012	114,542,886	26,163,726	8,662,382	21,167,178
2013	114,660,766	25,878,787	8,542,371	21,246,559
2014	122,019,311	26,028,235	8,669,350	21,273,472
2015	140,193,523	26,740,443	9,285,153	21,699,215
2016	156,152,081	28,616,976	9,397,569	21,820,864
2017	183,297,977	34,796,819	11,300,024	22,649,372

Source: Broward County Property Appraiser

(1) Agricultural property, vacant property of non-profit agricultural use and miscellaneous

(2) The Council's maximum tax rate is \$.50 per \$1,000 of assessed taxable value.

Note: The basis of assessed value is approximately one hundred percent (100%) of actual value.

Property in Broward County is reassessed annually.

Less: Tax-Exempt Property	Total Taxable Assessed Value	Total Council Tax Rate (2)
\$ 86,689,663	\$ 169,570,418	0.3572
79,667,920	161,645,379	0.3754
59,245,911	141,567,643	0.4243
38,422,067	134,561,745	0.4696
38,094,078	132,442,094	0.4789
37,637,272	132,691,211	0.4902
37,747,627	140,242,741	0.4882
38,053,693	159,864,641	0.4882
38,455,766	177,531,724	0.4882
40,062,909	211,981,283	0.4882

CHILDREN'S SERVICES COUNCIL OF BROWARD COUNTY
Direct and Overlapping Property Tax Rates,
Last Ten Fiscal Years

(rate per \$1,000 of assessed value)

Fiscal Year	Council			Overlapping Rates (a)		
	Basic Direct Rate	Debt Service Rate	Total Rate	Broward County (a)	School Board of Broward County	South Florida Water Management District
2008	0.3572	-	0.3572	5.2868	7.6484	0.6240
2009	0.3754	-	0.3754	5.3145	7.4170	0.6240
2010	0.4243	-	0.4243	5.3889	7.4310	0.6240
2011	0.4696	-	0.4696	5.5530	7.6310	0.6240
2012	0.4789	-	0.4789	5.5530	7.4180	0.4363
2013	0.4902	-	0.4902	5.5530	7.4560	0.4289
2014	0.4882	-	0.4882	5.7230	7.4800	0.4110
2015	0.4882	-	0.4882	5.7230	7.4380	0.3842
2016	0.4882	-	0.4882	5.7230	7.2740	0.3551
2017	0.4882	-	0.4882	5.6690	6.5394	0.3100

Source: Broward County Revenue Collection Division

(a) Includes levies for operating and debt service costs.

Note: The Council's maximum tax rate is \$.50 per \$1,000 of assessed taxable value.



CHILDREN'S SERVICES COUNCIL OF BROWARD COUNTY
Principal Property Taxpayers,
Current Year and Nine Years Ago
(Dollars in Thousands)

2008			
Taxpayer	Taxes Levied	Rank	Percent to Aggregate Taxes Levied
Florida Power & Light Company	\$ 31,092	1	0.84%
Southern Bell Tel Co	17,376	2	0.47%
Sunrise Mills Ltd	8,362	3	0.22%
Diplomat Properties Ltd.	6,624	4	0.18%
Northwestern Mutual Life	3,359	5	0.09%
Publix Supermarkets, Inc.	3,413	6	0.09%
Cocowalk Dev Inc.	2,982	7	0.08%
Palm Vacation Group	2,776	8	0.07%
Marriott Ownership Resorts Inc.	2,537	9	0.07%
Pembroke Lakes Mall Ltd.	2,295	10	0.06%
IH3 Property Florida LP, Altus Group US INC	-		0.00%
Wal-Mart Stores East	-		0.00%
Arium Resort LLC	-		0.00%
Bellsouth Telecommunications Inc.	-		0.00%
Harbor Beach Property LLC	-		0.00%
RAR2-Las Olas Centre LLC	-		0.00%
 Total principal taxpayers	 \$ 80,816		 2.17%

Source: Broward County Revenue Collector

2017

Taxes Levied	Rank	Percent to Aggregate Taxes Levied
\$ 37,751	1	1.00%
-		
13,519	2	0.36%
7,929.00	3	0.21%
-		
3,674	9	0.10%
-		
-		
-		0.00%
-		0.00%
3,912	7	0.10%
5,016	4	0.13%
4,456	5	0.12%
4,050	6	0.11%
3,875.00	8	0.10%
3,096.00	10	0.08%
<u>\$ 87,278</u>		<u>2.31%</u>

CHILDREN'S SERVICES COUNCIL OF BROWARD COUNTY
Property Tax Levies and Collections,
Last Ten Fiscal Years

Fiscal Year Ended September 30,	Total Taxes Levied for the Fiscal Year	Collected within the Fiscal Year of the Levy		Collections in Subsequent Years
		Amount	Percentage of Levy	
2008	\$ 63,240,600.0	\$ 59,925,176.0	94.8%	\$ 419,951
2009	63,145,444	59,597,697	94.4%	657,073
2010	63,430,596	59,406,863	93.7%	408,687
2011	61,318,170	57,368,232	93.6%	150,998
2012	60,801,037	57,457,936	94.5%	(84,652)
2013	62,564,907	59,460,641	95.0%	(198,309)
2014	64,738,551	61,482,355	95.0%	(163,255)
2015	69,070,390	65,274,088	94.5%	63,643
2016	73,794,596	70,095,209	95.0%	69,687
2017	79,787,967	75,867,788	95.1%	

Source: Property Appraisers Office
The Children's Services Council - Finance Administration

Total Collections to Date

Amount	Percentage of Levy
\$ 60,345,126.92	95.4%
60,254,770	95.4%
59,815,550	94.3%
57,519,230	93.8%
57,373,284	94.4%
59,262,332	94.7%
61,319,100	94.7%
65,337,731	94.6%
70,164,896	95.1%
75,867,788	95.1%

CHILDREN'S SERVICES COUNCIL OF BROWARD COUNTY
Demographic and Economic Statistics
Last Ten Calendar Years

Year	Population (1)	Personal Income (2)	Per Capita Personal Income (2)	Median Age (3)
2008	1,758,494	\$ 73,590,969	\$ 41,974	39.6
2009	1,744,590	72,752,112	41,185	38.5
2010	1,748,066	72,092,767	41,146	39.6
2011	1,780,172	76,133,577	42,768	39.7
2012	1,815,137	76,687,882	43,351	40.0
2013	1,838,844	80,525,783	43,792	39.9
2014	1,869,235	80,905,552	43,283	39.9
2015	1,896,425	85,167,498	44,909	40.0
2016	1,909,632	89,572,271	46,906	40.0
2017	N/A	N/A	N/A	N/A

Source:

- (1) US Department of Commerce, Bureau of the Census
- (2) US Department of Commerce, Bureau of Economic Analysis
- (3) US Census Bureau, American Community Survey (ACS)
- (4) School Board of Broward County
- (5) U.S. Department of Labor, Bureau of Labor Statistics

N/A Not Available

* Includes Charter Schools

* Public School Enrollment (4)	Unemployment Rate (5)
258,905	6.10%
255,738	9.80%
255,203	9.70%
256,872	9.30%
258,803	7.60%
260,564	5.60%
262,563	5.20%
265,401	4.70%
271,105	3.30%
N/A	N/A

CHILDREN'S SERVICES COUNCIL OF BROWARD COUNTY
Principal Employers
Current Year and Nine Years Ago

2008

Employer (1)	Employees	Rank	Percentage of Total County Employment
Broward School Board*	28,134	1	2.8%
Broward County Government*	11,908	2	1.2%
Tenet Healthcare Corp	10,156	3	1.0%
Memorial Healthcare System*	10,000	4	1.0%
N. Broward Hospital District*	8,062	5	0.8%
American Express	5,800	6	0.6%
The Continental Group	3,900	7	0.4%
Nova Southeastern	3,028	8	0.3%
PRC	2,700	9	0.3%
City of Fort Lauderdale	2,647	10	0.3%
Total	86,335		8.7%

* Includes both full time and part time employees

Sources:

- (1) The Broward Alliance
- (2) Labor Market Statistics, Local Area Unemployment Statistics Program
- (3) U.S. Department of Labor Bureau of Labor Statistics

CHILDREN'S SERVICES COUNCIL OF BROWARD COUNTY
Principal Employers
Current Year and Nine Years Ago

2017

Employer (1)	Employees (1)	Rank	Percentage of Total County Employment (2)
Broward School Board*	33,864	1	3.4%
Memorial Healthcare System*	13,137	2	1.3%
Broward County Government*	11,771	3	1.2%
Broward Health*	8,219	4	0.8%
Nova Southeastern	7,102	5	0.7%
Broward College*	5,204	6	0.5%
Autonation	4,100	7	0.4%
American Express	3,500	8	0.3%
City of Fort Lauderdale	2,749	9	0.3%
Spirit Airlines	1,800	10	0.2%
Total	91,446		9.1%

* Includes both full time and part time employees

Sources:

- (1) The Broward Alliance
- (2) Labor Market Statistics, Local Area Unemployment Statistics Program
- (3) U.S. Department of Labor Bureau of Labor Statistics

CHILDREN'S SERVICES COUNCIL OF BROWARD COUNTY
Full-time Equivalent Employees by Function
Last Ten Fiscal Years

Full-time Equivalent Employees as of September 30,	Program Support	General Administration	Grand Total
2008	38	15	53
2009	38	15	53
2010	38	16	54
2011	37	16	53
2012	41	16	57
2013	42	16	58
2014	45	17	62
2015	48	15	63
2016	49	17	66
2017	52	17	69

Source: Children's Services Council, Finance Administration

CHILDREN'S SERVICES COUNCIL OF BROWARD COUNTY
Operating Indicators
Last Ten Fiscal Years

Utilization

Contract/Program Services	Amount Under Contract (a)	Actual Expenditures (b)	Under- utilized (c)	Unallocated (d)
<u>Fiscal Year</u>				
2008	95%	89%	6%	5%
2009	99%	94%	5%	1%
2010	99%	96%	3%	1%
2011	99%	96%	3%	1%
2012	99%	95%	4%	1%
2013	99%	94%	5%	1%
2014	100%	96%	4%	0%
2015	99%	94%	5%	0%
2016	100%	94%	6%	0%
2017	99%	92%	7%	0%

- (a) Percentage of contract/program services budget under contract.
- (b) Percentage of contract/program services budget spent.
- (c) Percentage of contract/program services budget contracted but not spent.
- (d) Percentage of contract/program services budget not allocated/contracted.

General Fund Total Expenditures as a percentage of revenues

<u>Fiscal Year</u>	<u>Budget (e)</u>	<u>Actual (f)</u>
2008	111%	101%
2009	127%	119%
2010	108%	103%
2011	105%	97%
2012	107%	101%
2013	105%	99%
2014	106%	101%
2015	106%	100%
2016	106%	99%
2017	107%	97%

- (e) Budgeted expenditures as a percent of budgeted revenue
- (f) Actual expenditures as a percent of actual revenue

CHILDREN'S SERVICES COUNCIL OF BROWARD COUNTY

Program Budget Indicators

Last Ten Fiscal Years

	Fiscal			
	<u>2008</u>	<u>2009</u>	<u>2010</u>	<u>2011</u>
	Budget	Budget	Budget	Budget
Family Strengthening	\$ 12,037,427	\$ 11,402,429	\$ 12,369,120	\$ 11,279,033
Child Welfare/Adoption Promotion	322,620	135,000	135,000	135,000
Youth Development	7,667,084	6,667,236	6,981,814	5,969,318
Delinquency Prevention	3,379,521	2,854,521	2,904,521	2,964,398
Independent Living	1,433,144	1,351,756	1,325,000	1,575,000
Special Needs	11,568,884	12,331,063	9,994,748	9,930,834
Out of School Time	12,639,864	13,981,899	12,821,033	11,937,672
Early Child Education	6,509,108	6,566,390	7,260,000	6,764,045
Physical Health	2,909,150	2,921,080	2,173,077	2,002,631
System Goals	2,480,838	2,037,043	1,928,863	1,963,019
Unallocated	1,663,982	54,848	75,331	202,241
TOTAL	\$ 62,611,622	\$ 60,303,265	\$ 57,968,507	\$ 54,723,191

Source: Children's Services Council, Finance Administration

Year						
	<u>2012</u>	<u>2013</u>	<u>2014</u>	<u>2015</u>	<u>2016</u>	<u>2017</u>
	Budget	Budget	Budget	Budget	Budget	Budget
\$	11,894,698	\$ 12,083,464	\$ 12,342,529	\$ 13,368,082	\$ 14,634,489	\$ 14,625,683
	135,000	160,000	160,000	160,000	201,425	449,023
	6,105,422	6,892,313	7,061,103	8,105,573	8,565,486	9,913,146
	2,988,398	3,018,398	3,299,074	3,819,116	3,882,289	3,693,789
	1,575,000	1,620,200	1,705,743	1,793,734	1,938,078	3,453,678
	9,735,281	9,732,320	9,826,260	10,544,491	11,262,154	11,615,565
	12,060,942	11,057,680	11,595,555	12,305,000	12,510,258	12,739,048
	6,682,700	7,306,189	7,527,142	6,964,718	7,101,288	8,331,244
	1,951,276	1,952,276	1,973,941	2,169,334	2,413,343	2,579,085
	2,161,593	2,298,712	2,444,562	2,147,989	2,176,270	2,945,616
	60,629	8,154	63,074	78,262	183,623	177,863
\$	55,350,939	\$ 56,129,706	\$ 57,998,983	\$ 61,456,299	\$ 64,868,703	\$ 70,523,740





COMPLIANCE SECTION





**INDEPENDENT AUDITORS' REPORT ON INTERNAL CONTROL OVER FINANCIAL REPORTING
AND ON COMPLIANCE AND OTHER MATTERS BASED ON AN AUDIT OF FINANCIAL
STATEMENTS PERFORMED IN ACCORDANCE WITH GOVERNMENT AUDITING STANDARDS**

To the Members of the Council of
Children's Services Council of Broward County
Lauderhill, Florida

We have audited, in accordance with the auditing standards generally accepted in the United States of America and the standards applicable to financial audits contained in *Government Auditing Standards* issued by the Comptroller General of the United States, the financial statements of the governmental activities and each major fund of the Children's Services Council of Broward County (the "Council") as of and for the fiscal year ended September 30, 2017, and the related notes to the financial statements, which collectively comprise the Council's basic financial statements, and have issued our report thereon dated March 15, 2018.

Internal Control over Financial Reporting

In planning and performing our audit of the financial statements, we considered the Council's internal control over financial reporting (internal control) to determine the audit procedures that are appropriate in the circumstances for the purpose of expressing our opinions on the financial statements, but not for the purpose of expressing an opinion on the effectiveness of the Council's internal control. Accordingly, we do not express an opinion on the effectiveness of the Council's internal control.

A *deficiency in internal control* exists when the design or operation of a control does not allow management or employees, in the normal course of performing their assigned functions, to prevent, or detect and correct, misstatements on a timely basis. A *material weakness* is a deficiency, or a combination of deficiencies, in internal control, such that there is a reasonable possibility that a material misstatement of the Council's financial statements will not be prevented, or detected and corrected on a timely basis. A *significant deficiency* is a deficiency, or a combination of deficiencies, in internal control that is less severe than a material weakness, yet important enough to merit attention by those charged with governance.

Our consideration of internal control was for the limited purpose described in the first paragraph of this section and was not designed to identify all deficiencies in internal control that might be material weaknesses or, significant deficiencies. Given these limitations, during our audit we did not identify any deficiencies in internal control that we consider to be material weaknesses. However, material weaknesses may exist that have not been identified.

Compliance and Other Matters

As part of obtaining reasonable assurance about whether the Council's financial statements are free from material misstatement, we performed tests of its compliance with certain provisions of laws, regulations, contracts, and grant agreements, noncompliance with which could have a direct and material effect on the determination of financial statement amounts. However, providing an opinion on compliance with those provisions was not an objective of our audit, and accordingly, we do not express such an opinion. The results of our tests disclosed no instances of noncompliance or other matters that are required to be reported under *Government Auditing Standards*.

Purpose of this Report

The purpose of this report is solely to describe the scope of our testing of internal control and compliance and the results of that testing, and not to provide an opinion on the effectiveness of the Council's internal control or on compliance. This report is an integral part of an audit performed in accordance with *Government Auditing Standards* in considering the Council's internal control and compliance. Accordingly, this communication is not suitable for any other purpose.

Caballero Fierman Llerena + Garcia, LLP

Caballero Fierman Llerena + Garcia, LLP
Coral Gables, Florida
March 15, 2018



**INDEPENDENT AUDITORS' REPORT ON COMPLIANCE FOR EACH MAJOR PROGRAM
AND ON INTERNAL CONTROL OVER COMPLIANCE REQUIRED BY THE UNIFORM GUIDANCE**

To the Members of the Council of
Children's Services Council of Broward County
Lauderhill, Florida

Report on Compliance for Each Major Federal Program

We have audited the Children's Services Council of Broward County's (the "Council") compliance with the types of compliance requirements described in the *OMB Compliance Supplement* that could have a direct and material effect on each of the Council's major federal programs for the fiscal year ended September 30, 2017. The Council's major federal programs are identified in the summary of auditors' results section of the accompanying schedule of findings and questioned costs.

Management's Responsibility

Management is responsible for compliance with federal statutes, regulations, and the terms and conditions of its federal awards applicable to its federal programs.

Auditors' Responsibility

Our responsibility is to express an opinion on compliance for each of the Council's major federal programs based on our audit of the types of compliance requirements referred to above. We conducted our audit of compliance in accordance with auditing standards generally accepted in the United States of America; the standards applicable to financial audits contained in *Government Auditing Standards*, issued by the Comptroller General of the United States; and the audit requirements of Title 2 U.S. *Code of Federal Regulations* Part 200, *Uniform Administrative Requirements, Cost Principles, and Audit Requirements for Federal Awards* (Uniform Guidance). Those standards and the Uniform Guidance require that we plan and perform the audit to obtain reasonable assurance about whether noncompliance with the types of compliance requirements referred to above that could have a direct and material effect on a major federal program occurred. An audit includes examining, on a test basis, evidence about the Council's compliance with those requirements and performing such other procedures as we considered necessary in the circumstances.

We believe that our audit provides a reasonable basis for our opinion on compliance for each major federal program. However, our audit does not provide a legal determination of the Council's compliance.

Opinion on Each Major Federal Program

In our opinion, the Council complied, in all material respects, with the types of compliance requirements referred to above that could have a direct and material effect on each of its major federal programs for the fiscal year ended September 30, 2017.

Report on Internal Control over Compliance

Management of the Council is responsible for establishing and maintaining effective internal control over compliance with the types of compliance requirements referred to above. In planning and performing our audit of compliance, we considered the Council's internal control over compliance with the types of requirements that could have a direct and material effect on each major federal program to determine the auditing procedures that are appropriate in the circumstances for the purpose of expressing an opinion on compliance for each major federal program and to test and report on internal control over compliance in accordance with the Uniform Guidance, but not for the purpose of expressing an opinion on the effectiveness of internal control over compliance. Accordingly, we do not express an opinion on the effectiveness of the Council's internal control over compliance.

A deficiency in internal control over compliance exists when the design or operation of a control over compliance does not allow management or employees, in the normal course of performing their assigned functions, to prevent, or detect and correct, noncompliance with a type of compliance requirement of a federal program on a timely basis. A *material weakness in internal control over compliance* is a deficiency, or combination of deficiencies, in internal control over compliance, such that there is a reasonable possibility that material noncompliance with a type of compliance requirement of a federal program will not be prevented, or detected and corrected, on a timely basis. A *significant deficiency in internal control over compliance* is a deficiency, or a combination of deficiencies, in internal control over compliance with a type of compliance requirement of a federal program that is less severe than a material weakness in internal control over compliance, yet important enough to merit attention by those charged with governance.

Our consideration of internal control over compliance was for the limited purpose described in the first paragraph of this section and was not designed to identify all deficiencies in internal control over compliance that might be material weaknesses or significant deficiencies. We did not identify any deficiencies in internal control over compliance that we consider to be material weaknesses. However, material weaknesses may exist that have not been identified.

The purpose of this report on internal control over compliance is solely to describe the scope of our testing of internal control over compliance and the results of that testing based on the requirements of the Uniform Guidance. Accordingly, this report is not suitable for any other purpose.

Caballero Fierman Llerena + Garcia, LLP

Caballero Fierman Llerena + Garcia, LLP
Coral Gables, Florida
March 15, 2018

**Children's Services Council of Broward County
Schedule of Expenditures of Federal Awards
For the Fiscal Year Ended September 30, 2017**

<u>Federal Agency, Pass-through Entity, Federal Program</u>	<u>CFDA Number</u>	<u>Contract/Grant Number</u>	<u>Expenditures</u>	<u>Transfers to Subrecipients</u>
Federal Agency Name:				
Department of Education -				
Direct Programs:				
Be the B.O.S.S. (Best Opportunities To Shine and Succeed)	84.420A	V420A150015-15A	\$ 264,818	\$ 159,007
Indirect Programs:				
Pass-through:				
Florida Department of Education				
21st Century Community Learning Centers	84.287	12A-2447B-7PCC2	524,517	481,167
21st Century Community Learning Centers	84.287	12A-2448B-8PCC2	32,885	25,146
Total Department of Education			<u>822,220</u>	<u>665,320</u>
Department of Labor -				
Pass-through:				
Careersource Broward -	17.259	AA-26773-15-55-A-12	387,071	387,071
Total Department of Labor			<u>387,071</u>	<u>387,071</u>
Department of Health and Human Services -				
Pass-through:				
Florida Department of Children and Families -				
Foster Care - Title IV-E	93.658	---	61,217	-
Adoption Assitance - Title IV-E	93.659	---	33,611	-
			<u>94,828</u>	<u>-</u>
Total Department of Health and Human Services - Total Expenditures of Federal Awards			<u>\$ 1,304,119</u>	<u>\$ 1,052,391</u>

The notes to the schedule of expenditures of federal awards are an integral part of this schedule.

CHILDREN'S SERVICES COUNCIL OF BROWARD COUNTY
NOTES TO SCHEDULE OF EXPENDITURES OF FEDERAL AWARDS
FOR THE FISCAL YEAR ENDED SEPTEMBER 30, 2017

NOTE 1 – BASIS OF PRESENTATION

The accompanying schedule of expenditures of federal awards (the schedule) includes the federal grant activity of the Children's Services Council of Broward County (the Council) under programs of the federal government for the fiscal year ended September 30, 2017. The information in this schedule is presented in accordance with the requirements of Title 2 U.S. Code of Federal Regulations Part 200, *Uniform Administrative Requirements, Cost Principles, and Audit Requirements for Federal Awards* (Uniform Guidance). Because the schedule presents only a selected portion of the operations of the Council, it is not intended to and does not present the financial position or changes in net position of the Council.

NOTE 2 – SUMMARY OF SIGNIFICANT ACCOUNTING POLICIES

Expenditures reported in the schedule are reported on the accrual basis of accounting. Such expenditures are recognized following the cost principles contained in the Uniform Guidance wherein certain types of expenditures are not allowable or are limited as a reimbursement. Pass-through entity identifying numbers are presented where available.

NOTE 3 – INDIRECT COST RATE

The Council has elected not to use the 10-percent de minimis indirect cost rate allowed under the Uniform Guidance.

CHILDREN'S SERVICES COUNCIL OF BROWARD COUNTY
SCHEDULE OF FINDINGS AND QUESTIONED COSTS
FOR THE FISCAL YEAR ENDED SEPTEMBER 30, 2017

SECTION I - SUMMARY OF AUDITORS' RESULTS

Financial Statements

Type of auditors' report issued:	<i>Unmodified Opinion</i>
Internal control over financial reporting:	
Material weakness(es) identified?	___ yes <u>X</u> no
Significant deficiencies identified not considered to be material weakness?	___ yes <u>X</u> None reported
Non-compliance material to financial statements noted?	___ yes <u>X</u> no

Federal Awards

Internal control over major federal awards programs:	
Material weakness(es) identified?	___ yes <u>X</u> no
Significant deficiencies identified not considered to be material weakness?	___ yes <u>X</u> None reported
Type of auditors' report issued on compliance for major federal awards programs:	<i>Unmodified Opinion</i>
Any audit findings disclosed that are required to be reported in accordance with CFR 200.516(a)?	___ yes <u>X</u> no

Identification of major programs:

<u>Federal Awards Program</u>	<u>CFDA No.</u>
21 ST Century Community Learning Centers	84.287
Dollar threshold used to distinguish between Type A and Type B programs:	\$750,000
Auditee qualified as low risk auditee?	<u>X</u> yes ___ no

CHILDREN'S SERVICES COUNCIL OF BROWARD COUNTY
SCHEDULE OF FINDINGS AND QUESTIONED COSTS
FOR THE FISCAL YEAR ENDED SEPTEMBER 30, 2017

SECTION II – CURRENT YEAR FINANCIAL STATEMENT FINDINGS

None.

SECTION III – CURRENT YEAR FEDERAL AWARD FINDINGS AND QUESTIONED COSTS

None.

MANAGEMENT LETTER IN ACCORDANCE WITH THE RULES OF THE AUDITOR GENERAL OF THE STATE OF FLORIDA

To the Members of the Council of
Children's Services Council of Broward County
Lauderhill, Florida

Report on the Financial Statements

We have audited the financial statements of the Children's Services Council of Broward County (the "Council"), as of and for the fiscal year ended September 30, 2017, and have issued our report thereon dated March 15, 2018.

Auditors' Responsibility

We conducted our audit in accordance with auditing standards generally accepted in the United States of America; the standards applicable to financial audits contained in *Government Auditing Standards*, issued by the Comptroller General of the United States; the audit requirements of Title 2 U.S. *Code of Federal Regulations* Part 200, *Uniform Administrative Requirements, Cost Principles, and Audit Requirements for Federal Awards* (Uniform Guidance); and Chapter 10.550, Rules of the Auditor General.

Other Reporting Requirements

We have issued our Independent Auditors' Report on Internal Control over Financial Reporting and on Compliance and Other Matters Based on an Audit of Financial Statements Performed in Accordance with *Government Auditing Standards*; Independent Auditors' Report on Compliance For Each Major Program and on Internal Control Over Compliance Required By The Uniform Guidance; Schedule of Findings and Questioned Costs; and Independent Accountants' Report on an examination conducted in accordance with *AICPA Professional Standards*, AT-C Section 315, regarding compliance requirements in accordance with Chapter 10.550, Rules of the Auditor General. Disclosures in those reports and schedule, which are dated March 15, 2018, should be considered in conjunction with this management letter.

Prior Audit Findings

Section 10.554(1)(i)1., Rules of the Auditor General, requires that we determine whether or not corrective actions have been taken to address findings and recommendations made in the preceding financial audit report. There were no findings or recommendations made in the preceding financial audit report.

Official Title and Legal Authority

Section 10.554(1)(i)4., Rules of the Auditor General, requires that the name or official title and legal authority for the primary government and each component unit of the reporting entity be disclosed in this management letter, unless disclosed in the notes to the financial statements. The Children's Services Council of Broward County was established by Chapter 19892, Laws of Florida, Act of 1939. In 1955 this was repealed and the Council was re-created under Laws of Florida, Act of 1955. The Council does not have any component units.

Financial Condition and Management

Sections 10.554(1)(i)5.a. and 10.556(7), Rules of the Auditor General, require us to apply appropriate procedures and communicate the results of our determination as to whether or not the Council has met one or more of the conditions described in Section 218.503(1), Florida Statutes, and to identify the specific condition(s) met. In connection with our audit, we determined that the Council did not meet any of the conditions described in Section 218.503(1), Florida Statutes.

Financial Condition and Management (Continued)

Pursuant to Sections 10.554(1)(i)5.c. and 10.556(8), Rules of the Auditor General, we applied financial condition assessment procedures for the Council. It is management's responsibility to monitor the Council's financial condition, and our financial condition assessment was based in part on representations made by management and the review of financial information provided by same.

Section 10.554(1)(i)2., Rules of the Auditor General, requires that we communicate any recommendations to improve financial management. In connection with our audit, we did not have any such recommendations.

Annual Financial Report

Section 10.554(1)(i)5.b. and 10.556(7), Rules of the Auditor General, require us to apply appropriate procedures and communicate the results of our determination as to whether the annual financial report for the Council for the fiscal year ended September 30, 2017, filed with the Florida Department of Financial Services pursuant to Section 218.32(1)(a), Florida Statutes, is in agreement with the annual financial audit report for the fiscal year ended September 30, 2017. In connection with our audit, we determined that these two reports were in agreement.

Additional Matters

Section 10.554(1)(i)3., Rules of the Auditor General, requires us to communicate noncompliance with provisions of contracts or grant agreements, or abuse, that have occurred, or are likely to have occurred, that have an effect on the financial statements that is less than material but warrants the attention of those charged with governance. In connection with our audit, we did not note any such findings.

Purpose of this Letter

Our management letter is intended solely for the information and use of the Legislative Auditing Committee, members of the Florida Senate and the Florida House of Representatives, the Florida Auditor General, Federal and other granting agencies, the Council members and management of the Children's Services Council of Broward County, and is not intended to be and should not be used by anyone other than these specified parties.

Caballero Fierman Llerena + Garcia, LLP

Caballero Fierman Llerena + Garcia, LLP
Coral Gables, Florida
March 15, 2018



CABALLERO FIERMAN
LLERENA + GARCIA LLP
accountants | advisors

**INDEPENDENT ACCOUNTANTS' REPORT ON COMPLIANCE PURSUANT TO
SECTION 218.415 FLORIDA STATUTES**

To the Members of the Council of
Children's Services Council of Broward County
Lauderhill, Florida

We have examined the Children's Services Council of Broward County (the "Council") compliance with the requirements of Section 218.415 Florida Statutes during the period of October 1, 2016 to September 30, 2017. Management of the Council is responsible for the Council's compliance with the specified requirements. Our responsibility is to express an opinion on the Council's compliance with the specified requirements based on our examination.

Our examination was conducted in accordance with attestation standards established by the American Institute of Certified Public Accountants. Those standards require that we plan and perform the examination to obtain reasonable assurance about whether the Council complied, in all material respects, with the specified requirements referenced above. An examination involves performing procedures to obtain evidence about whether the Council complied with the specified requirements. The nature, timing, and extent of the procedures selected depend on our judgment, including an assessment of the risks of material noncompliance, whether due to fraud or error. We believe that the evidence we obtained is sufficient and appropriate to provide a reasonable basis for our opinion.

Our examination does not provide a legal determination on the Council's compliance with specified requirements. In our opinion, the Council complied, in all material respects, with the requirements of Section 218.415 Florida Statutes during the period of October 1, 2016 to September 30, 2017.

This report is intended solely for the information and use of management of the Children's Services Council of Broward County, the Council members, and the Auditor General of the State of Florida, and is not intended to be and should not be used by anyone other than these specified parties.

Caballero Fierman Llerena + Garcia, LLP

Caballero Fierman Llerena + Garcia, LLP
Coral Gables, Florida
March 15, 2018



MISSION

To provide the leadership, advocacy and resources necessary to enhance children's lives and empower them to become responsible, productive adults through collaborative planning and funding of a continuum of quality of care.

VISION

The children of Broward County shall have the opportunity to realize their full potential, their hopes and dreams, supported by a nurturing family and community.

Facebook.com/CSC Broward
Twitter@CSCBroward
YouTube CSC Broward



Email: info@cscbroward.org
Call Us: 954 377-1000